



## LIST OF BEDROOMS AT MERBACH HILL HOUSE

Merbach Hill House has 9 bedrooms, 3 in the main Farmhouse and then a further 5 bedrooms in the Annexe. The Annexe bedrooms are a stone's throw from the main house, and each have a bathroom. Each bedroom is individually styled.

### BEDROOMS – sleeps 19-24 in 9 bedrooms

● = represents a choice in bedroom configuration

Bedroom	Beds	Sleeps	Features
Bedroom 1 (Annexe)	Four poster bed.	2	Single level double height room with four poster bed, armchair seating area and hospitality table. Also has an en-suite double shower.  (This room has near level access to a nearby parking space and step free access and is wheelchair friendly in the main room and en-suite shower room).
Bedroom 2 (Annexe)	King size double, can be set up as two single beds ●	2-3	Split level guest suite with downstairs lounge area, upstairs king size mezzanine bedroom and downstairs big bathroom with claw foot roll top bath, separate shower and wc/basin.  (This room can be configured as a twin with the sofa bed downstairs folding out to a small double for one additional adult)
Bedroom 3 (Annexe)	King size double	2-4	Split level guest suite with downstairs lounge area, upstairs king size mezzanine bedroom and downstairs big bathroom with claw foot roll top bath, separate shower and wc/basin.  This room can accommodate a complimentary travel cot for under twos, or up to two single camp beds for children up to 16.
Bedroom 4 (Annexe)	King size double	2-4	Split level guest suite with downstairs lounge area, upstairs king size mezzanine bedroom and downstairs big bathroom with claw foot roll top bath, separate shower and wc/basin.  This room can accommodate a complimentary travel cot for under twos, or up to two single camp beds for children up to 16.
Bedroom 5 (Annexe)	King size double	2-4	Split level guest suite with downstairs lounge area, upstairs king size mezzanine bedroom and downstairs big bathroom with claw foot roll top bath, separate shower and wc/basin.  This room can accommodate a complimentary travel cot for under twos, or up to two single camp beds for children up to 16.



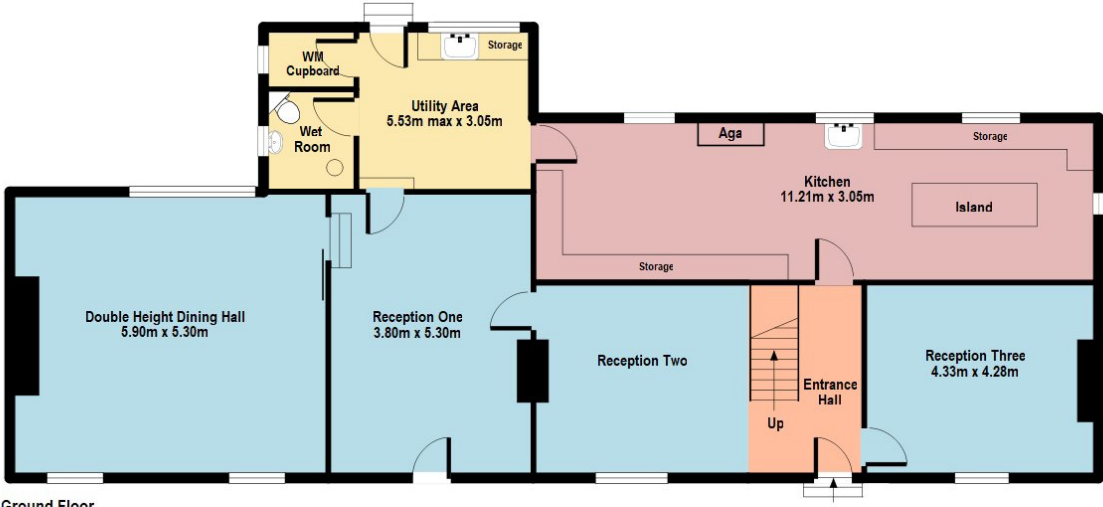
Bedroom 6 (Farmhouse)	King size double	2	<p>Situated in the main farmhouse, this first-floor king size bedroom overlooks the front gardens and is decorated in an eclectic moody style with velvet armchair seating.</p> <p>This room has an large en-suite bathroom with bath, separate shower and wc/basin.</p> <p>This room can accommodate a complimentary travel cot for an under two.</p>
Bedroom 7 (Farmhouse)	King size double	2	<p>Situated in the main farmhouse, this elegantly decorated king size bedroom overlooks the front garden and features original art prints from the owners collection.</p> <p>This room has access to a shared bathroom a few steps away or a downstairs shared shower room.</p> <p>This room cannot accommodate extra beds or cots.</p>
Bedroom 8 (Farmhouse)	King size double	2	<p>Situated in the main farmhouse, this king size bedroom overlooks the rear garden with views and is decorated in a contemporary style.</p> <p>This room has access to a shared bathroom outside the room and a shared downstairs shower room.</p> <p>This room cannot accommodate extra beds or cots but is ideal for younger guests using existing beds.</p>
Bedroom 9 (Farmhouse)	King size double	2	<p>Situated in the main farmhouse, this king size bedroom overlooks the rear garden with views and is decorated in a contemporary style.</p> <p>This room has access to a shared bathroom outside the room and a shared downstairs shower room.</p> <p>This room cannot accommodate extra beds or cots but is ideal for younger guests using existing beds.</p>
<b>Total</b>		<b>19-24</b>	

#### Note on occupancy:

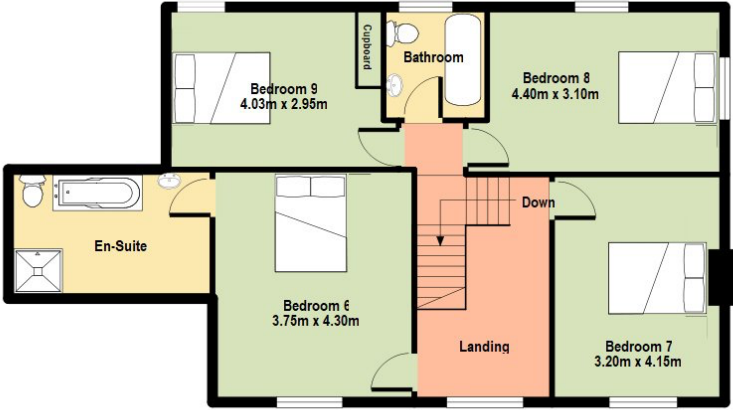
Note that although the house can sleep up to 24 with the use of extra beds, the main dining rooms is suitable for up to 21 seated comfortably. The house is best suited to up to 19 adults, and 5 children.



# FLOORPLANS – MAIN HOUSE



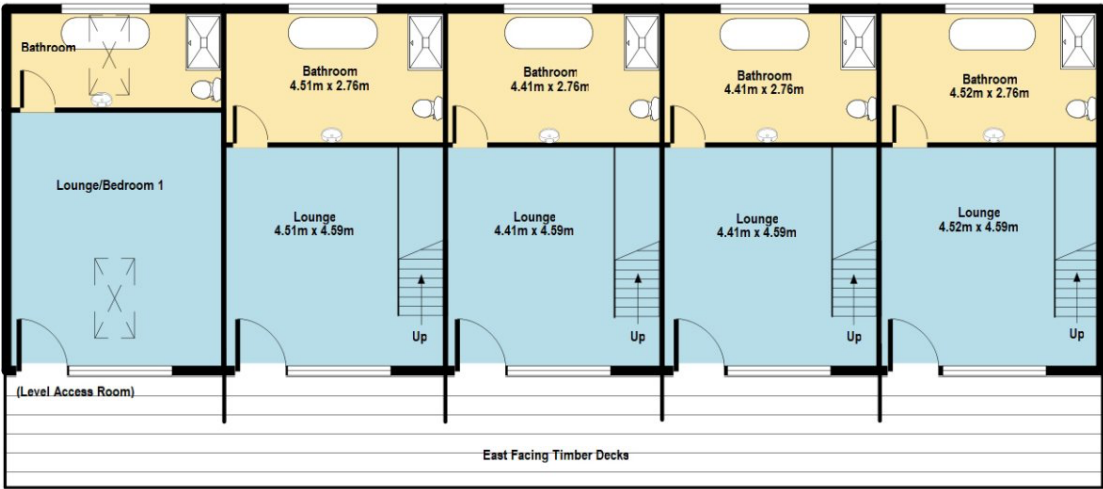
Ground Floor



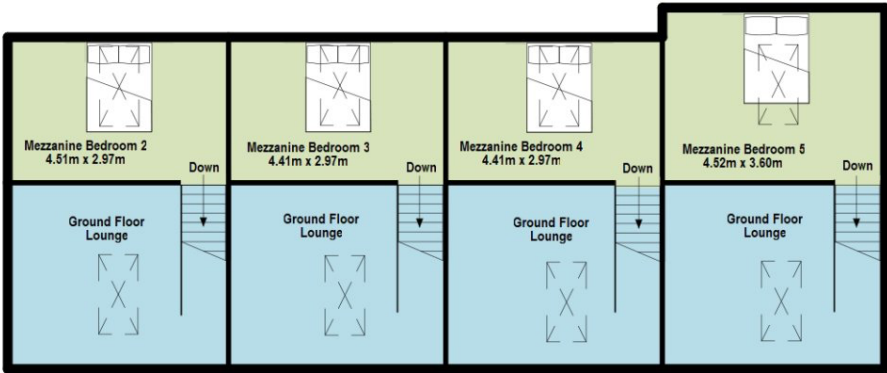
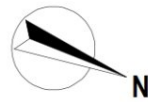
First Floor



# FLOORPLANS – ANNEXE



Ground Floor



First Floor

