



## LIST OF BEDROOMS & FLOOR PLAN AT HIGHCHURCH HOUSE

BEDROOMS – sleeps 16 (+1\*) in 6 bedrooms

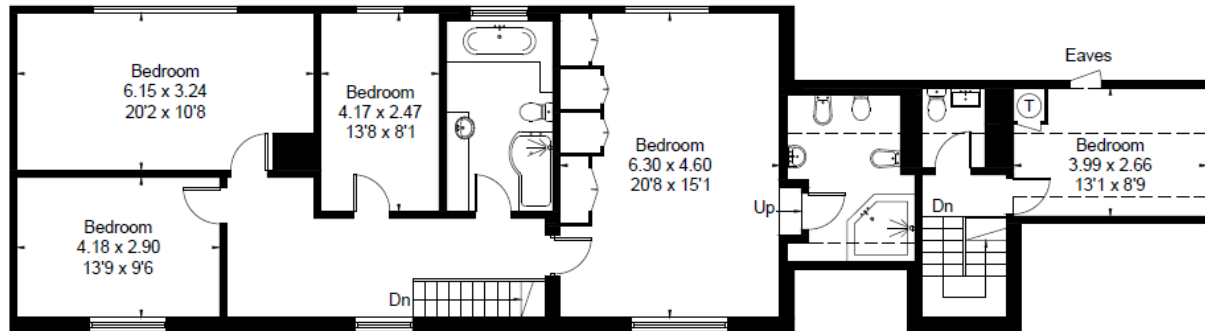
Bedroom	Beds	Sleeps	Features
The Rocking Horse Room (first floor)	Double bed	2	Looks out to the front of the house with views of the church. Victorian rocking horse in room. Shared family bathroom with Victorian roll-top bath and shower.
The Garden View Room (first floor)	King size bed	2	Looks out to the garden at the rear of the house. *Space for a cot or z bed. Shared family bathroom with Victorian roll-top bath and shower.
The Butterscotch Room (first floor)	Super king-size bed, plus double bed	4	Large room with dual aspect windows looking out to the front of the house and garden to the rear. *Space for a cot or z bed. En-suite with shower, toilet, bidet and his and hers sinks.
The Rosy Room (first floor)	Double bed	2	Looks out to the garden at the rear of the house. Shared family bathroom with Victorian roll-top bath and shower.
The Opulent (ground floor)	Two super king-size beds	4	Large room with dual aspect windows looking out over the front garden and driveway and the back of the property. Smart TV. *Space for a cot or z bed. Open wooden staircase to an upstairs shower room. Access to downstairs toilet.
The Silver Room (first floor)	King size bed	2	Bedroom in the eaves. Looks out over the side lane. Next door to a shower room (can be shared with Opulent bedroom).
<b>Total</b>		<b>16 (+1*)</b>	

\*There is one z bed available on request for an additional charge of £10 (details of which bedrooms can accommodate a z bed are shown above).

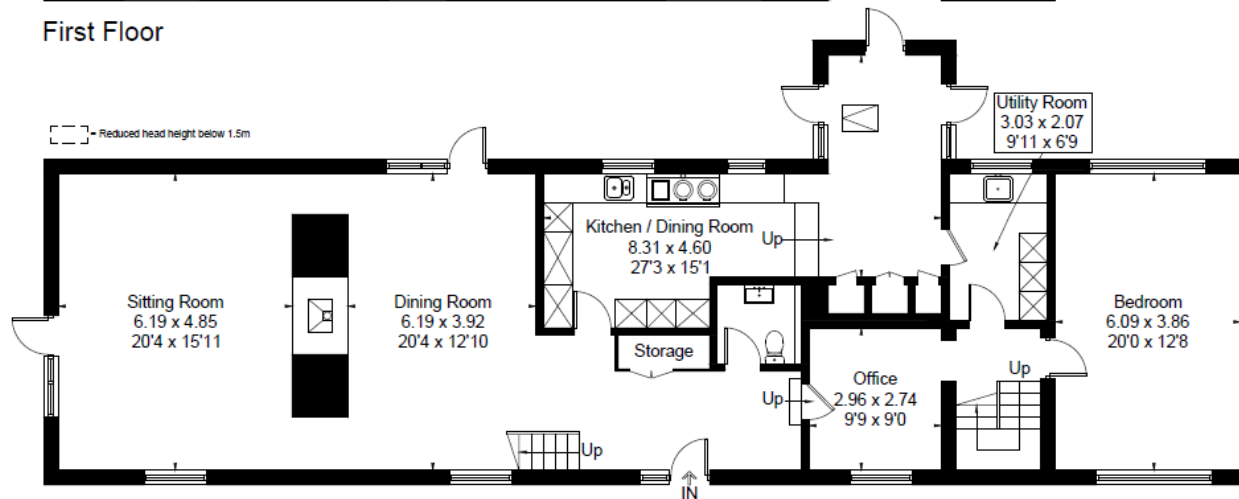


# FLOOR PLAN

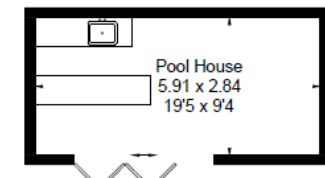
Approximate Floor Area = 286 sq m / 3078 sq ft  
 Pool House = 16.8 sq m / 181 sq ft  
 Total = 302.8 sq m / 3259 sq ft



First Floor



Ground Floor



(Not Shown In Actual Location / Orientation)

