



LIST OF BEDROOMS & FLOOR PLANS AT WOLDFOOT FARM

BEDROOMS – sleeps 16* in 7 bedrooms

Bedroom	Beds	Sleeps	Features
Bedroom 1 (ground floor)	King size bed	2	Ensuite shower room with grab rails and shower chair. Space for a cot.
Bedroom 2 (first floor)	King size bed	2	Shared bathroom with bath only (shared with bedroom 3). Space for a cot.
Bedroom 3 (first floor)	Two single beds	2	Shared bathroom with bath only (shared with bedroom 2).
Bedroom 4 (first floor)	King size bed	2	Bedroom accessed via kitchen stairs. Shared shower room (shared with bedroom 5). Wooden cot.
Bedroom 5 (first floor)	Two single beds	2	Bedroom accessed via kitchen stairs. Shared shower room (shared with bedroom 4).
Bedroom 6 (second floor)	Two king size beds	4	Shared shower room (shared with bedroom 7). Space for a cot. Sofa bed available (additional cost of £50 per stay).
Bedroom 7 (second floor)	King size bed, plus single bed	3	Shared shower room (shared with bedroom 6). Space for a cot.
Total		16*	

Please note, none of the king size beds are zip and link so cannot be configured as twins.

One sofa bed (in bedroom 6) and one camp bed (in bedroom 7) are available for an additional cost of £50 per bed, per stay. There may be the option to add one small camp bed (more suited for a child) in bedrooms 1, 2 or 4, subject to availability (same cost as above).

*Please note, although there are beds for up to 20 guests (including the sofa bed and camp beds at additional cost), the maximum sleeping capacity allowed in Woldfoot Farm is 16 guests (see next page for additional capacity).

See page 3 for floor plans.



The Old Cart House (additional cost)

Located just across the yard from Woldfoot Farm, The Old Cart House is a self-contained annex with two ensuite bedrooms (see below), an open plan living, dining and fully equipped kitchen as well as a private enclosed garden. Please contact us for prices and availability.

BEDROOMS – sleeps 4 in 2 bedrooms

Bedroom	Beds	Sleeps	Features
Bedroom 1 (ground floor)	King size bed	2	Ensuite shower room.
Bedroom 2 (ground floor)	King size bed	2	Ensuite accessible wet room with shower and grab rails.
Total		4	

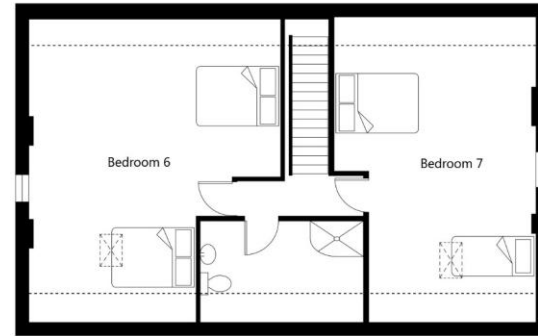
Please note, neither of the king size beds are zip and link so cannot be configured as twins.



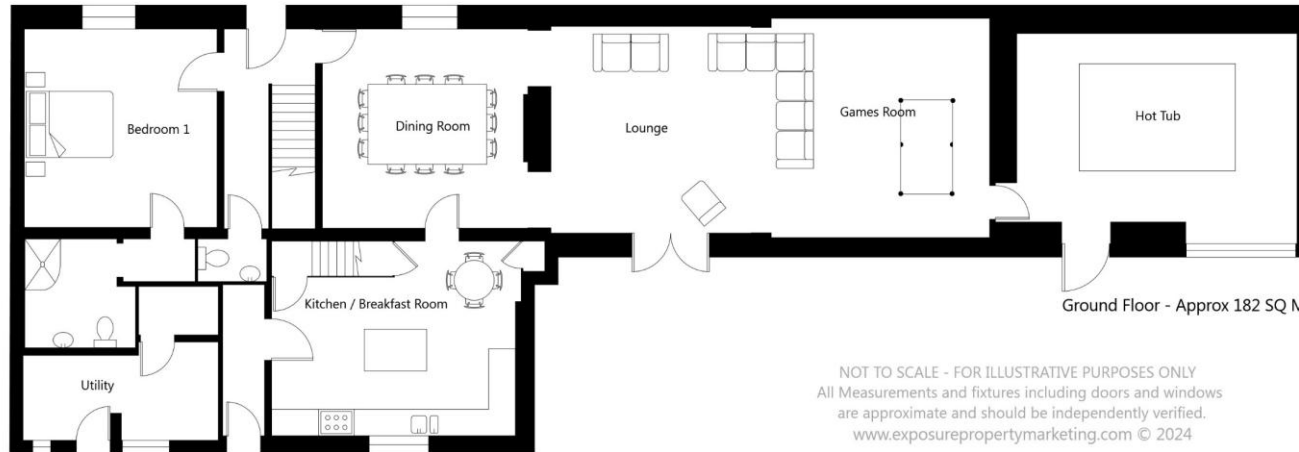
FLOOR PLANS – WOLDFOOT FARM



First Floor - Approx 106 SQ M



Second Floor - Approx 78 SQ M



Ground Floor - Approx 182 SQ M

NOT TO SCALE - FOR ILLUSTRATIVE PURPOSES ONLY
All Measurements and fixtures including doors and windows
are approximate and should be independently verified.
www.exposurepropertymarketing.com © 2024