



LIST OF ROOMS & FLOOR PLANS AT CASTLEMORTON BARN

[Castlemorton Barns](#) is made up of four barns, together sleeping up to 24 guests in 12 bedrooms. This includes:

- The Millhouse Sleeps 8 in 4 bedrooms
- The Stables Sleeps 8 in 4 bedrooms
- The Carhouse Sleeps 4 in 2 bedrooms
- The Piggery Sleeps 4 in 2 bedrooms

There is also a Pool Barn, which includes a large heated indoor swimming pool, and a kitchen and dining area with a large table for 24 guests to eat together.

Each of the four barns has an open kitchen, dining area and living space. This offers the perfect balance between having space to enjoy each other's company, but also having more space to retreat and unwind in.

Calm colours and rustic details make the bedrooms restful and inviting. From elegant ground floor bedrooms with views worth waking up for, to timber-framed attic rooms with a skylight for stargazing, bedtime is a delight at Castlemorton Barns.

Here's a list of all available bedrooms across the four barns:

THE MILLHOUSE – sleeps 8 in 4 bedrooms

● indicates a choice of bed configuration

| Bedroom | Beds | Sleeps | Features |
|-----------------------------|---|----------|--|
| Bedroom 1 (Second floor) | King size bed | 2 | En-suite bathroom with luxury shower and bath. |
| Bedroom 2 (Ground floor) | Double bed, can be divided into two single beds ● | 2 | Jack and Jill bathroom, shared with bedroom 3. |
| Bedroom 3 (Ground floor) | Double bed | 2 | Jack and Jill bathroom, shared with bedroom 2. |
| Bedroom 4 (Ground floor) | Double bed | 2 | Separate shower room. |
| Total | | 8 | |



THE STABLES – sleeps 8 in 4 bedrooms

● indicates a choice of bed configuration

| Bedroom | Beds | Sleeps | Features |
|-----------------------------|---|----------|---|
| Bedroom 1 (First floor) | King size bed | 2 | Luxury roll-top bath, with double sinks in the bedroom. |
| Bedroom 2 (First floor) | Double bed, can be divided into two single beds ● | 2 | Luxury large shower room. |
| Bedroom 3 (Ground floor) | Double bed, can be divided into two single beds ● | 2 | Luxury walk-in shower room. |
| Bedroom 4 (Ground floor) | Double bed | 2 | Luxury en-suite shower room. |
| Total | | 8 | |

THE CARTHOUSE – sleeps 4 in 2 bedrooms

● indicates a choice of bed configuration

| Bedroom | Beds | Sleeps | Features |
|-----------------------------|---|----------|---|
| Bedroom 1 (Ground floor) | Double bed | 2 | Large luxury en-suite walk-in shower room. |
| Bedroom 2 (First floor) | Double bed, can be divided into two single beds ● | 2 | Bedroom reached by a spiral staircase with Velux windows through which you can gaze at the stars! |
| Total | | 4 | |

THE PIGGERY – sleeps 4 in 2 bedrooms

● indicates a choice of bed configuration

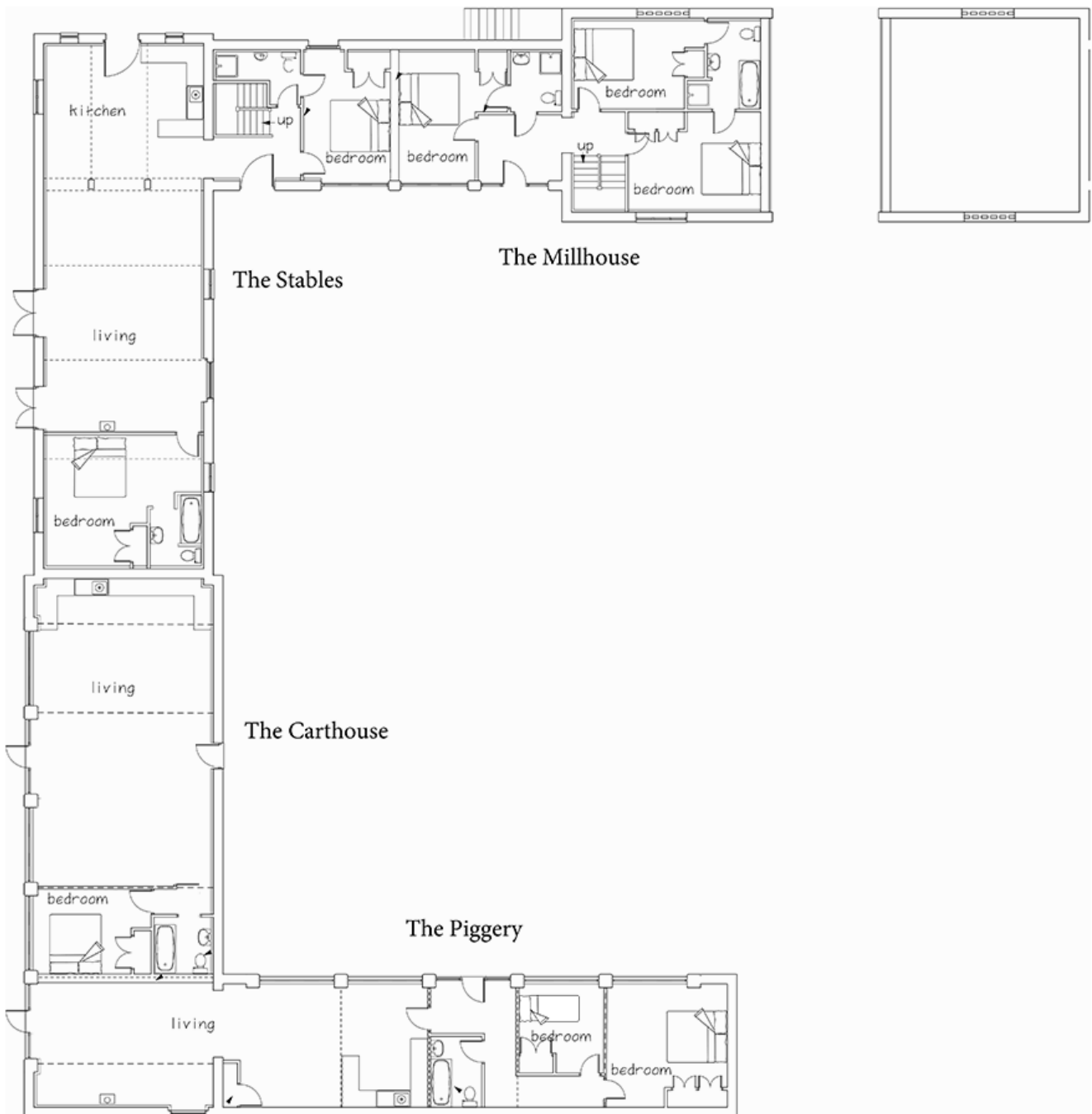
| Bedroom | Beds | Sleeps | Features |
|-----------------------------|---|----------|---------------------------------|
| Bedroom 1 (Ground floor) | Double bed | 2 | Shared bathroom with bedroom 2. |
| Bedroom 2 (Ground floor) | Double bed, can be divided into two single beds ● | 2 | Shared bathroom with bedroom 1. |
| Total | | 4 | |



Overall capacity:

- The barns sleep up to 24 guests across 12 bedrooms
- If each guest wants a private bedroom, the total capacity is 12
- If each guest would like their own bed, the total capacity is 18

GROUND FLOOR PLAN



FIRST AND SECOND FLOOR PLAN

