



LIST OF ROOMS & FLOOR PLANS AT BARFORD BEACH HOUSE

With 6 double en suite bedrooms, and beds for 12 (+4) people, most with incredible sea views and wide balconies, this house will delight and amaze. With secret doorways, magical features and quirky design touches throughout, this house is perfect for a family gathering or party weekend with a group of friends.

LIVING & ENTERTAINMENT SPACES

- **Sitting Room:** With a huge copper-clad central wall and hand-made metal shelving surrounding the wood burner and a 47" Smart TV, this room is an impressive, practical and stylish space for you to enjoy. With huge sliding glass doors both ends, you can see right through the house to the beautiful seascape beyond.
- **Cinema Room:** Tucked beside the spa is a cosy cinema room with a large drop-down screen, 4K projector and Apple TV box (with streaming services such as Netflix, Amazon Prime etc). Crack out the popcorn, it's time to get cosy!
- **Bunker Bar:** This is beyond cool: can you find the secret entrance and go through the rabbit hole? Predominantly for adults (and children under supervision), when all the fun of the day is done the party can continue in the underground nightclub! With a pool table and an arcade games machine (with over 700 retro games), everyone will be entertained.
- **Hot Tub and Sauna:** Whether you are a little chilled from a morning on the beach or just fancy indulging yourself, be sure to make time to spark up the hot tub and sauna during your stay. Rain or shine, it's a truly wonderful experience to sit looking at the sea from the comfort of a wood-fired hot tub with a glass of something in your hand. And when you get too hot, it's a short walk to the spa which has not only a cooling shower but also a cold bucket drop (if you're brave enough), which will cool you down superfast. If dry heat is more your thing, make sure you try out the fabulous 6-person sauna-with-a-view. Spa towels supplied.

KITCHEN AND DINING

- **Kitchen and Dining Room:** The incredible copper-clad kitchen is kitted out with all the equipment you might need to cook up a feast. What you can expect:
 - Dual control 3 oven Aga plus additional electric fan oven and 4 ring induction hob
 - Microwave
 - Fisher & Paykel fridge freezer with chilled water dispenser and icemaker
 - Two dishwashers
 - Wine fridge
 - Nespresso coffee machine
 - Persian oak dining table seating 12 guests (additional round table with 4 chairs to seat up to 16)
 - Floor to ceiling sliding glass doors onto the seaside garden
 - Separate utility room with washing machine and tumble dryer
 - Underfloor heating throughout



BEDROOMS – sleeps 12 (+4) in 6 bedrooms

● indicates a choice of bed configuration

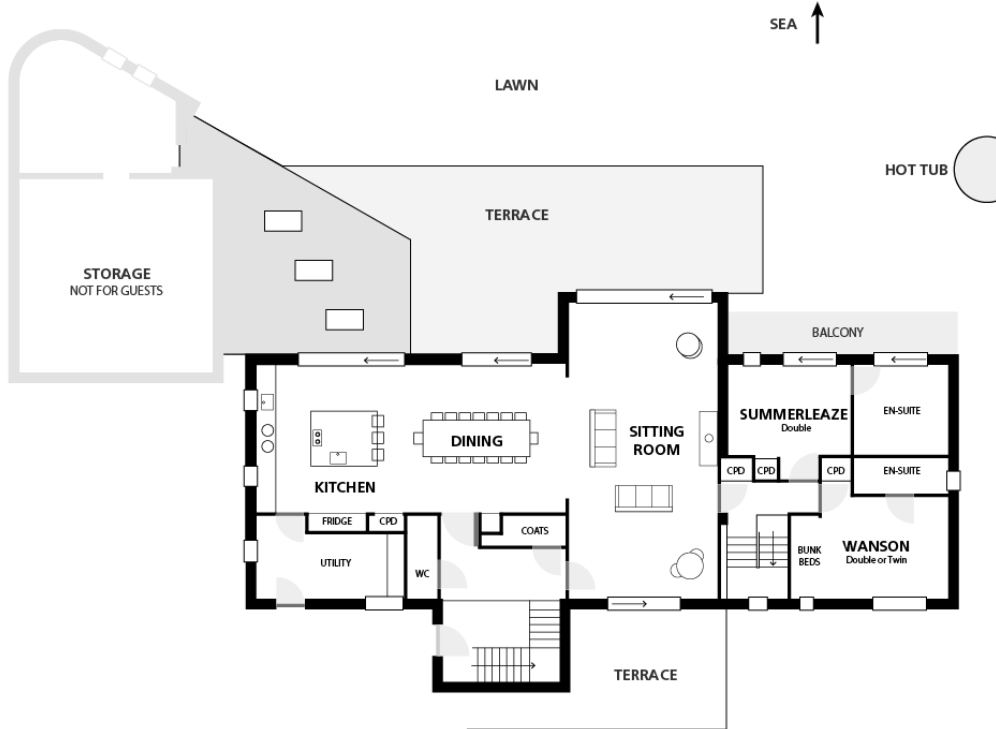
Bedroom	Beds	Sleeps	Features
Widemouth Master Suite (first floor)	Super king size bed	2	Enormous bedroom with panoramic sea views of the magnificent Cornish coast, plus secret back balcony, galley kitchenette/cocktail bar with mini fridge. Impressive white marble en suite bathroom with stunning double walk-in shower and William Holland bath (with its own porthole view of the sea). Separate loo and bidet.
Black Rock (first floor)	Super king size bed, can be divided into two single beds ● plus additional high mezzanine cabin bed suitable for an older child (a confident climber! – additional charge – see below).	2 (+2)	Balcony. En suite shower room.
Millook (first floor)	Bespoke scaffold four-poster super king size bed	2	Full-height sliding doors onto the balcony and out to amazing sea views. En suite shower room.
Crackington (first floor)	Super king size bed, can be divided into two single beds ●	2	Balcony with incredible sea views. Alice in Wonderland en suite bathroom with magical mirrored light shaft, hexagonal tiles and shower over the bath.
Summerleaze (ground floor)	Super king size bed	2	Balcony with incredible sea views. Marbled en suite bathroom with William Holland slipper bath and separate shower.
Wanson (ground floor)	Super king size bed, can be divided into two single beds ● plus additional built-in wooden full size single two-tier bunk beds (additional charge – see below)	2 (+2)	En suite shower room with St James shower.
Total		12 (+4)	

Extra beds: available at £150pp for short breaks (up to 6 nights) and £225pp (7+ nights).

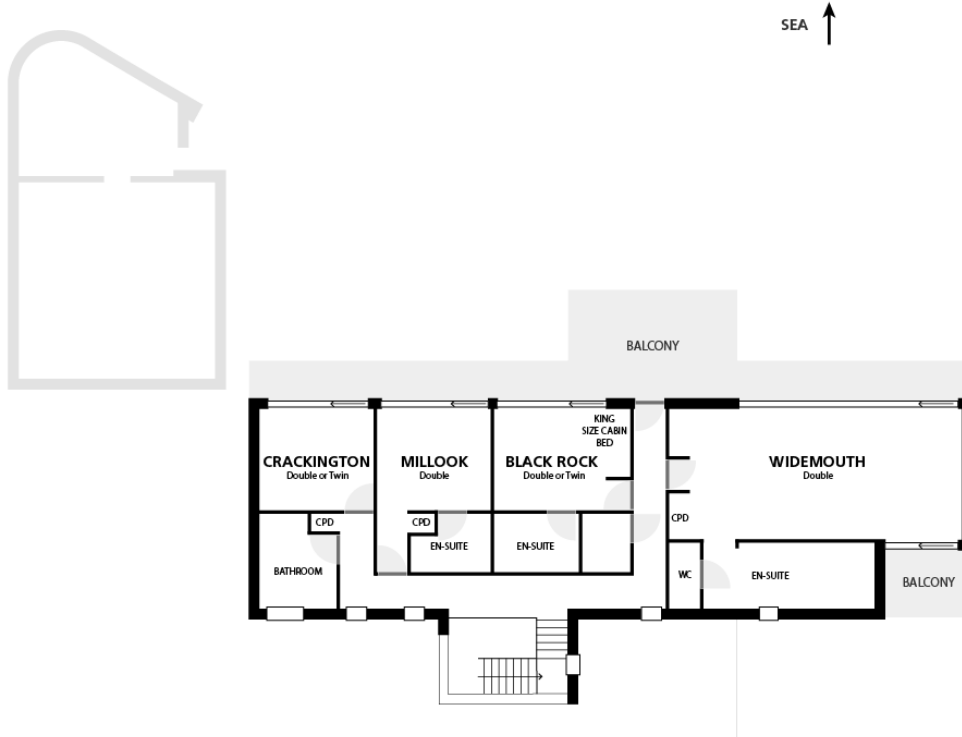


FLOOR PLANS

Ground Floor



First Floor



Lower Ground Floor

