



## LIST OF ROOMS & FLOOR PLANS AT LAKE WINDERMERE HOUSE

[Lake Windermere House](#) is an impressive Lakeland-stone holiday home in an enviable position on the shores of Lake Windermere. Sleeping up to 10 guests, Lake Windermere House has been painstakingly designed to create the ultimate luxury holiday home – think incredible lake views, designer details, a home cinema and games room.

Here's a list of all the main rooms in the house:

### LIVING & ENTERTAINMENT SPACES

- **Living Area:** with Stuv wood burner faced with local Burlington Stone.
- **Lounge:** main lounge with wood burner.
- **Snug:** the perfect place to relax and curl up with a good book.
- **Cinema Room:** with a 65-inch screen, Cambridge Audio speakers and a stunning Mah Jong sofa from Roche Bobois. Provides the ultimate chill-out den to watch favourite film classics.
- **Games Room:** large games room with a bespoke 8ft table with modern pendant lights above, a flat-screen TV and shelves full of books on the local area as well as design and interiors.

### KITCHEN & DINING

- **Kitchen:** with appliances by Gaggenau, and Ralph Lauren, Andrew Martin and Van Thiel furniture, this domestic domain is fully equipped with all the latest mod cons including a convenient Quooker tap and three cookers.
- **Dining Area:** formal dining area with a bespoke 3.5m, log-edge, 12-seater Whetstone Oak table.



## BEDROOMS – sleeps 10 in 5 bedrooms

● indicates a choice of bed configuration

Bedroom	Beds	Sleeps	Features
Bedroom 1 – Master Suite	Super king bed	2	Free standing oval shaped double bathtub in room with stunning lake views and a private balcony. Walk in wardrobes, separate living areas. En suite shower room with Mandarin Stone walls, giant Drench showers and twin sinks.
Bedroom 2	Super king bed	2	Free standing oval shaped double bathtub in room with stunning lake views and a private balcony. En suite shower room with Mandarin Stone walls, giant Drench showers and twin sinks.
Bedroom 3	Super king bed	2	Beautiful lake views. En suite bathroom with Mandarin Stone walls, giant Drench shower and bath.
Bedroom 4	Super king bed, can be divided into two single beds ●	2	Beautiful lake views. En suite bathroom with Mandarin Stone walls, giant Drench shower. Private balcony.
Bedroom 5	Super king bed, can be divided into two single beds ●	2	En suite bathroom with Mandarin Stone walls, giant Drench shower and bath and twin sinks. Views of the front garden.
<b>Total</b>		<b>10</b>	

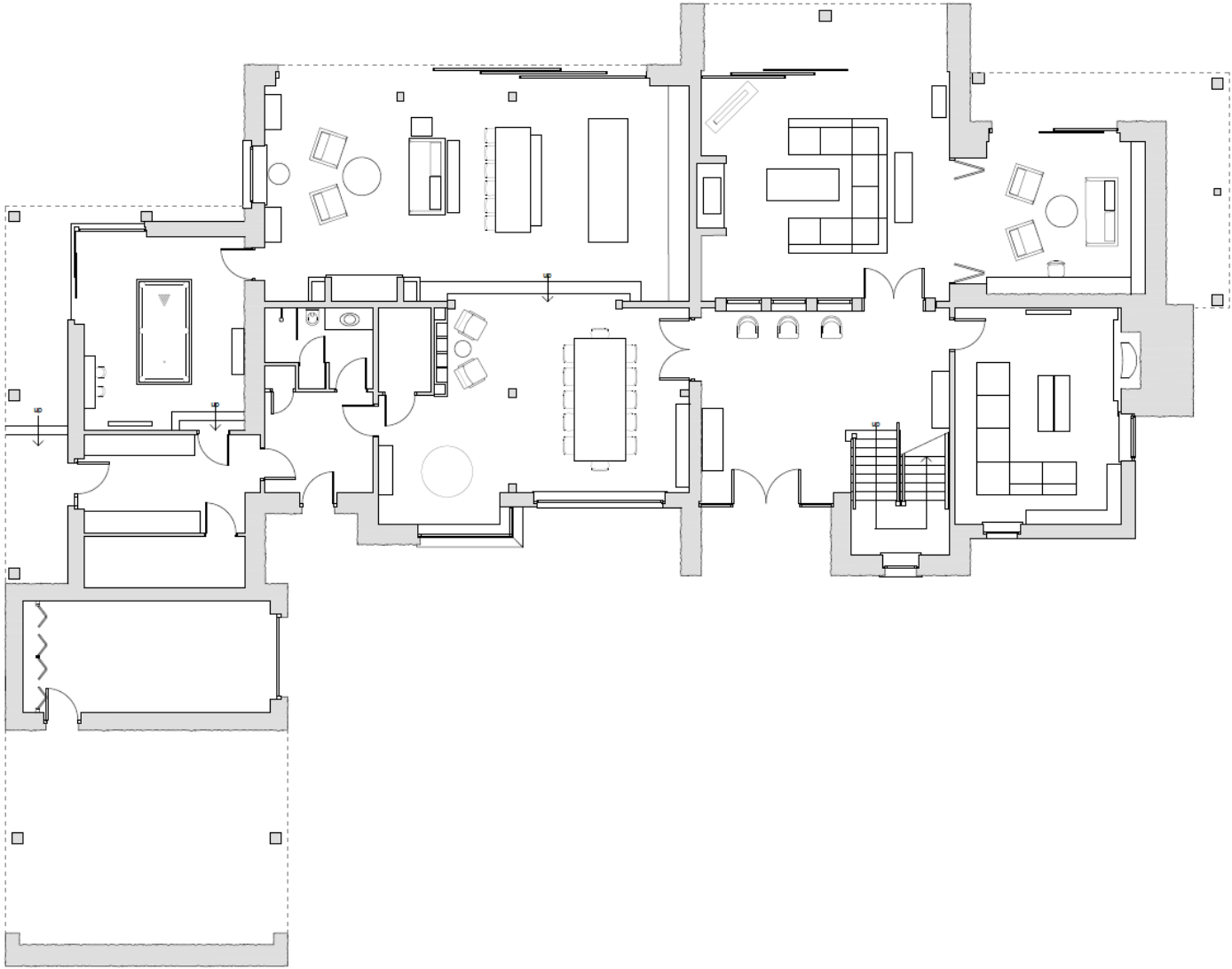
### Overall capacity:

- If each guest wants a private bedroom, the total capacity is 5.
- If each guest would like their own bed, the total capacity is 5.



FLOOR PLANS – ground floor

---



FLOOR PLANS – first floor

---

