



LIST OF BEDROOMS & FLOOR PLANS AT ROSEBRIAR HOUSE

BEDROOMS – sleeps 15 (+2*) in 8 bedrooms

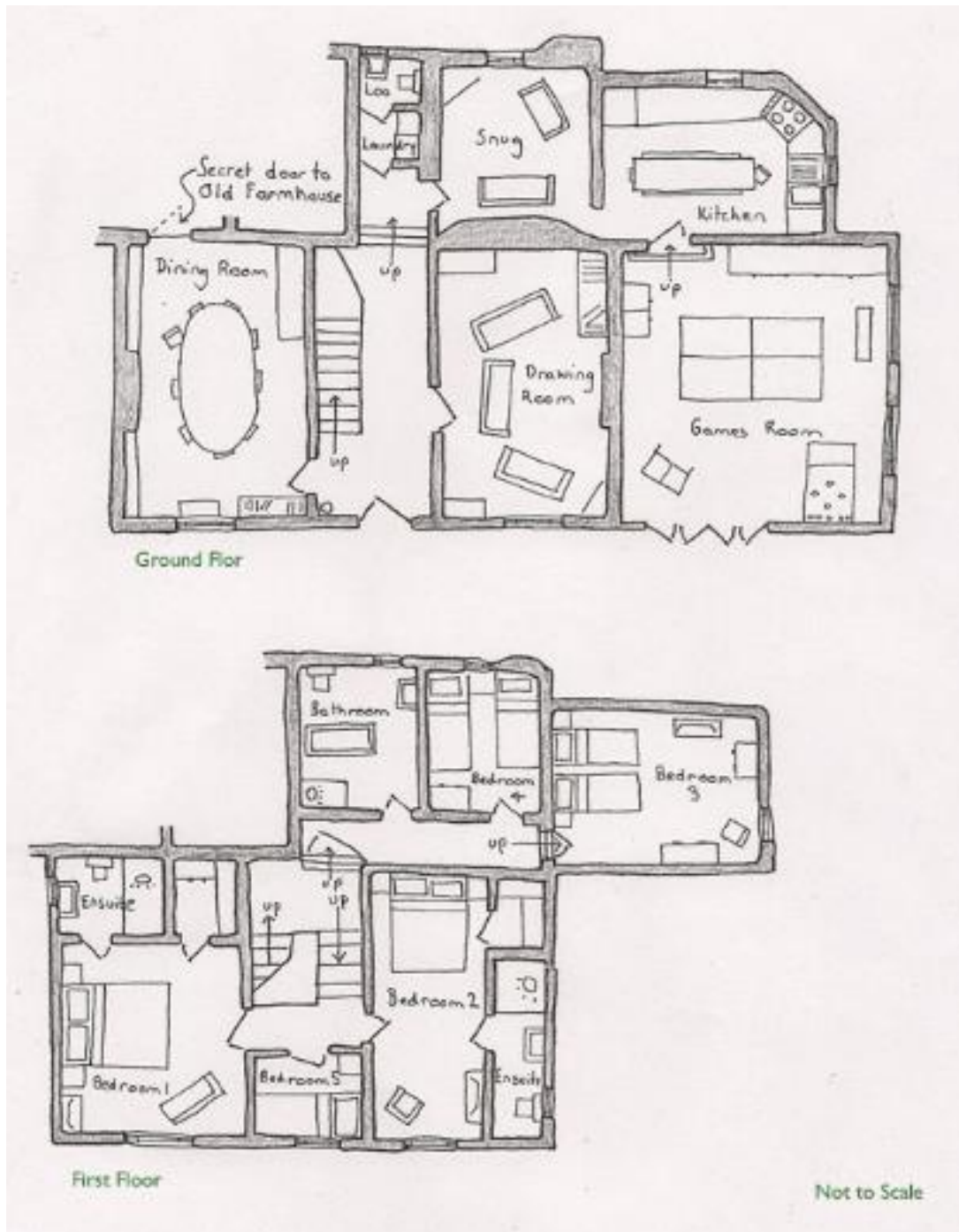
● indicates a choice of bed configuration

Bedroom	Beds	Sleeps	Features
Georgian House (East Wing)			
Bedroom 1 (first floor)	King size sleigh bed	2 (+1*)	Valley views. Large walk-in wardrobe space. Ensuite shower room. Space to add an extra single bed* and a cot.
Bedroom 2 (first floor)	King size bed	2	Valley views. Ensuite shower room. Space to add a cot.
Bedroom 3 (first floor)	Super king size bed (can be divided into two single beds) ●	2 (+1*)	Space to add an extra single bed* and a cot. Large family bathroom with roll top bath and separate shower (shared with bedrooms 4 & 5).
Bedroom 4 (first floor)	Twin beds	2	Large family bathroom with roll top bath and separate shower (shared with bedrooms 3 & 5).
Bedroom 5 (first floor)	Single bed	1	Large family bathroom with roll top bath and separate shower (shared with bedrooms 3 & 4).
Old Farmhouse (West Wing)			
Bedroom 1 (first floor)	Super king size four poster bed	2	Valley views. Ensuite shower room.
Bedroom 2 (first floor)	Twin beds	2	Access to family bathroom with bath with shower over.
Bedroom 3 (ground floor)	Super king size bed (can be divided into two single beds) ●	2	Ensuite shower room.
Total		15 (+2*)	

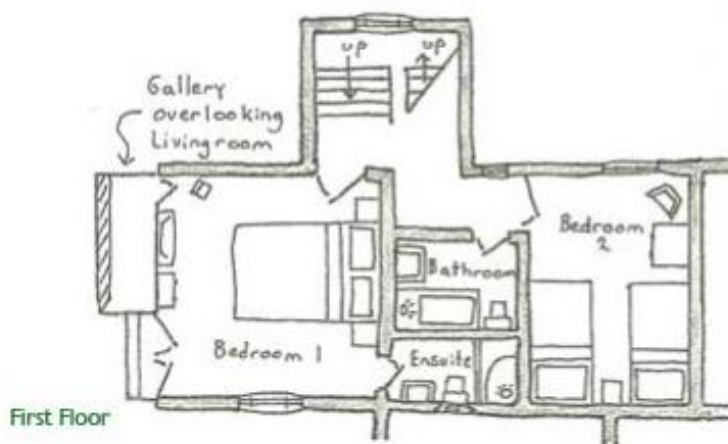
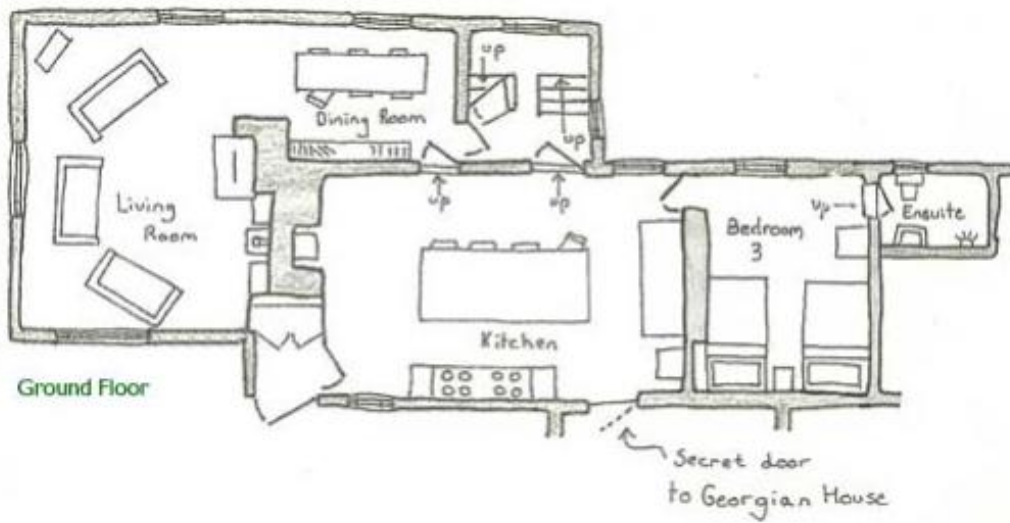
*Additional charge of £75 for each extra single bed. No additional charge for cots.



FLOOR PLANS – Georgian House (East Wing)



FLOOR PLANS – Old Farmhouse (West Wing)



Not to Scale

