



LIST OF ROOMS & FLOOR PLANS AT DEVONSHIRE HOUSE, DEVON

Originally built in 1826, Devonshire House boasts many of its original features, including a Grade II listed Victorian grotto. The house is traditional with a contemporary twist and includes culturally diverse art and craft collected by the present owners.

Here is a list of all the main rooms in the house:

LIVING & ENTERTAINMENT ROOMS

- Open-plan lounge and dining room
- Second lounge / TV room
- Kitchen (plus second kitchen)
- Large dance / yoga room in the Barn
- Snooker room in the Barn with full-size snooker table, cinema screen and Sky TV
- Gym in the Barn

BEDROOMS – sleeps 18 (plus 2 children) in 10 bedrooms

Bedroom	Beds	Sleeps	Features
Principle Room (Main House, first floor)	Four-poster, king-sized bed	2	En suite with super-large bespoke bath and shower
Parisian Room (Main House, first floor)	Super-king bed (can be divided into two single beds)	2	En suite with small bath and shower
Peacock Room (Main House, first floor)	Double bed	2	En suite shower room
Garden Room (Main House, first floor)	Brass king-sized bed	2	En suite with roll-top bath and shower
Cherry Room (Main House, second floor)	King-sized bed (can be divided into two single beds)	2	En suite shower room
White Room (Main House, second floor)	King-sized bed	2	En suite with small bath and shower



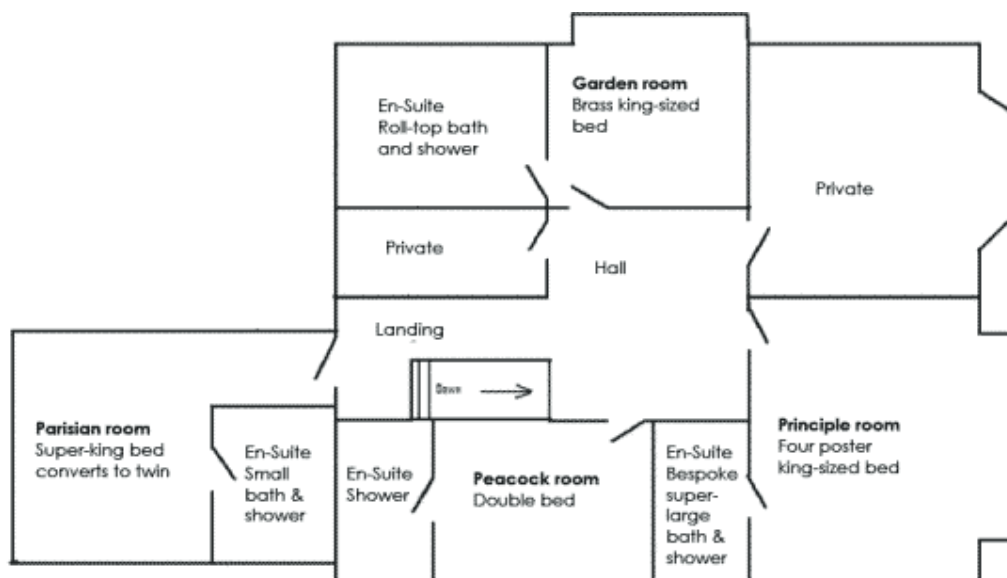
Bedroom	Beds	Sleeps	Features
Princess Room (Main House, second floor)	Emperor-sized bed	2	Door to main bathroom with large shower
Bunk/Kids Room (Main House, second floor)	Two single children's beds (2ft 6")	2	No en suite
Studio (Barn, ground floor)	King-sized bed (can be divided into two single beds)	2	En suite shower
Cobbled Room (Barn, ground floor)	Large king-sized bed	2	Disabled access on request. En suite with small bath and shower.
Total		18 +2 kids	



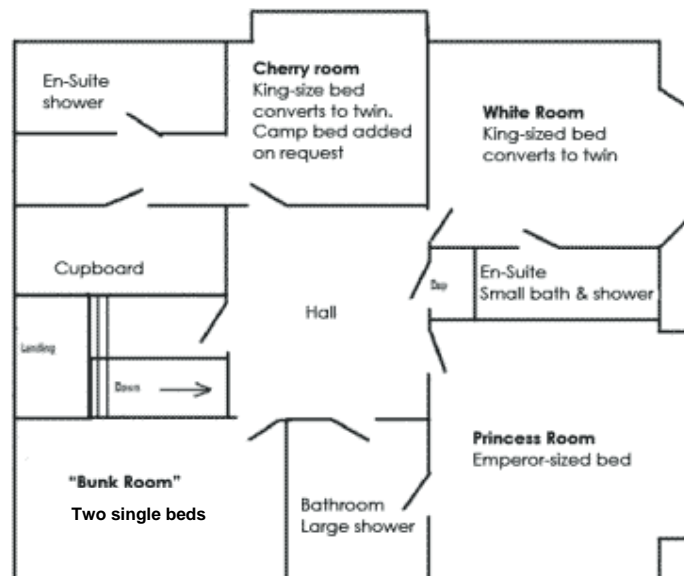
GROUND FLOOR PLAN



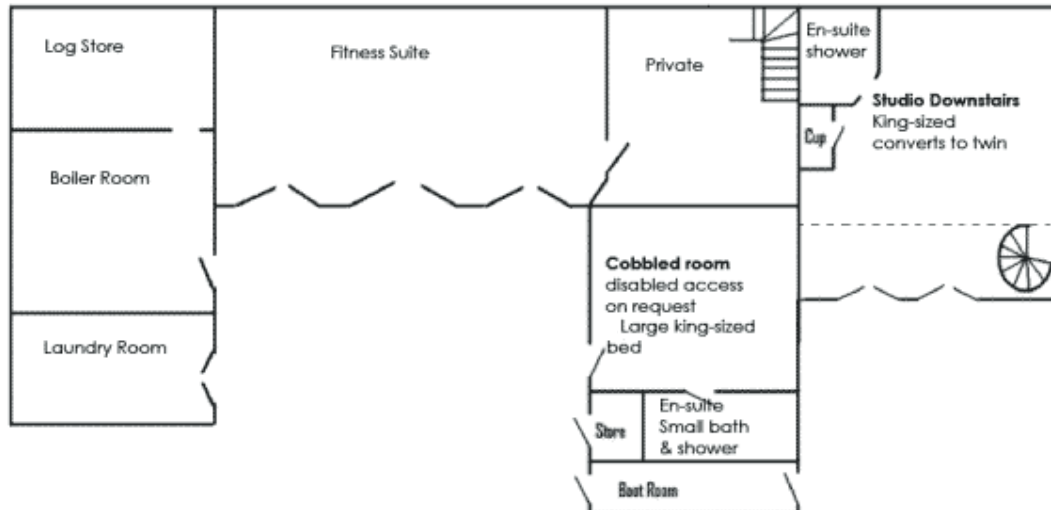
FIRST FLOOR PLAN



SECOND FLOOR PLAN



'THE BARN' GROUND FLOOR PLAN



'THE BARN' FIRST FLOOR PLAN

