



LIST OF ROOMS AND FLOOR PLANS AT LOCH TAY LODGE

[Loch Tay Lodge](#) has beautiful grounds extending to about four acres along the banks of the beautiful Loch Tay. There are lawns surrounding the house and rolling towards the fields leading to Loch Tay.

To the west of the house you'll find enchanted woodlands to explore. A tumbling burn cascades through the trees, crisscrossed by bridges linking the paths that meander through the magnificent variety of mature trees. Hidden in the woods there are three fire pits ranging from magnificent to intimate. The larger fire pit is perfect for a BBQ.

In all there are 13 en-suite bedrooms able to accommodate 29 people; perfect for a big gathering with family and friends.

Here is a list of the rooms available:

- Dining room for 26
- Breakfast room for 16
- Breakfast bar for 5
- Outside dining for 24
- Covered outside dining for 8
- Large pantry
- Cottage kitchen with 5 AGA ovens and, 2 AGA hotplates, 4 ring AGA halogen hob, 3 induction hobs, 1 combi oven, 1 oven, 2 large fridge freezers, 5 dishwashers, 1 commercial dishwasher (done in 60 seconds), 1 Franke coffee machine, 4 under-counter fridges, 3 microwaves
- Library
- Snug
- Sun Room
- Yoga Studio / Capercaillie
- Cinema/Media Room
- Games Room
- The Bar

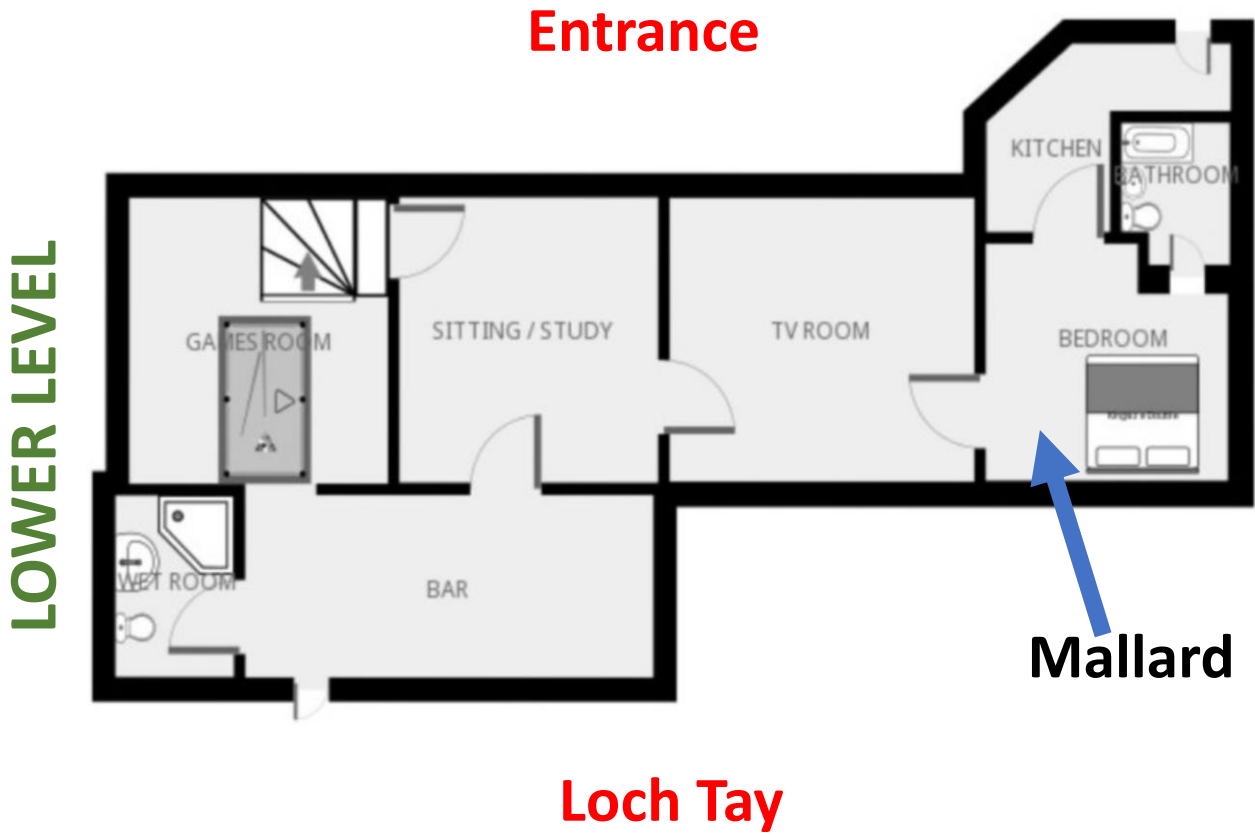
BEDROOMS – sleeps 29 in 13 bedrooms

Bedroom	Beds	Sleeps	Features
Mallard (lower level)	King size bed	2	En-suite bathroom with bath and shower over.
Kingfisher (ground floor)	King size four poster bed plus single	3	En-suite bathroom with bath and shower over.
Osprey (ground floor)	King size bed plus single	3	En-suite bathroom with bath and shower over.
Heron (first floor)	King size four poster bed plus single	3	En-suite bathroom with shower.
Robin (first floor)	King size bed	2	En-suite bathroom with shower.

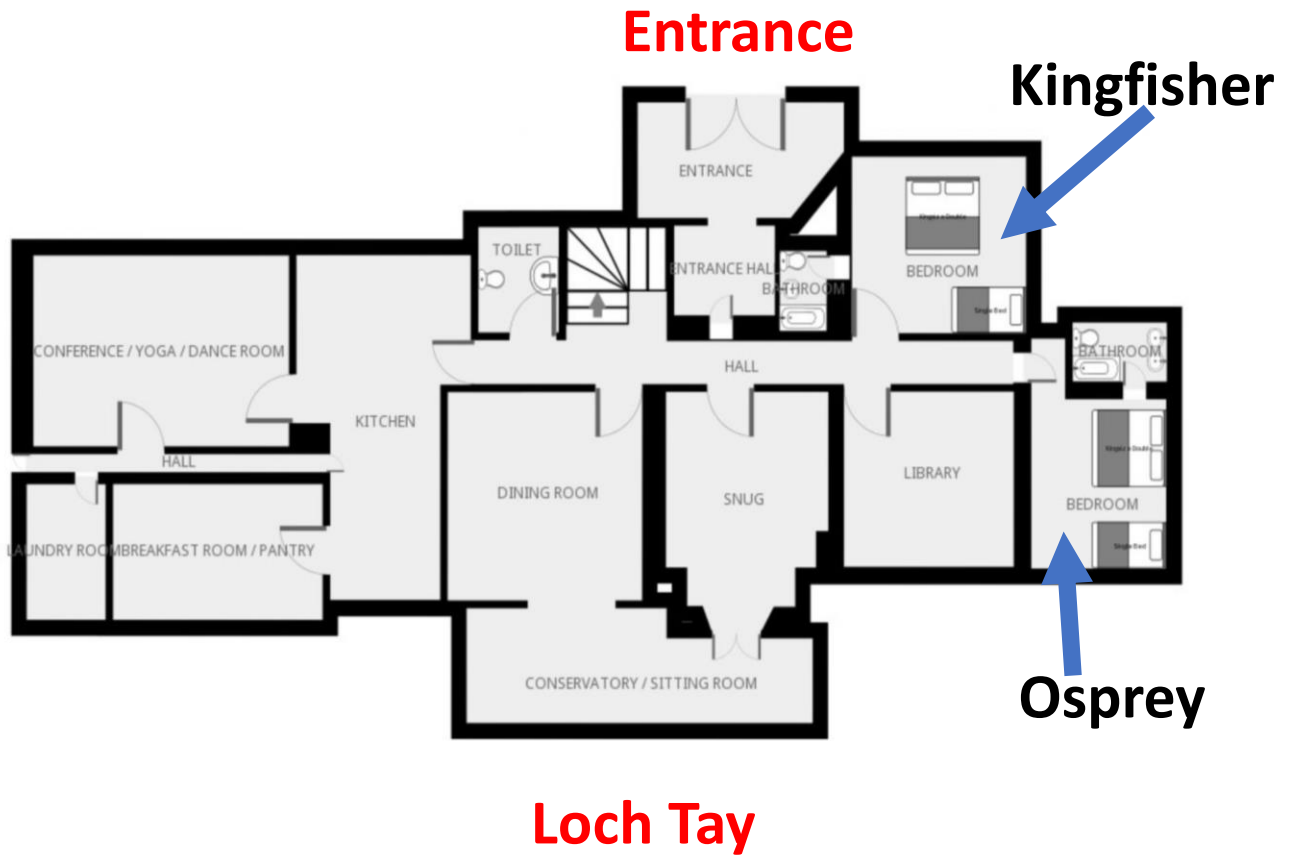


Bedroom	Beds	Sleeps	Features
Golden Eagle (first floor)	King size four poster bed	2	En-suite bathroom with shower.
Pheasant (first floor)	King size bed	2	En-suite bathroom with shower.
Ptarmigan (first floor)	King size bed	2	En-suite bathroom with shower.
Peregrine (first floor)	King Size bed	2	En-suite bathroom with shower.
Snowy Owl (first floor)	King Size bed	2	En-suite bathroom with shower.
Kestrel (first floor)	King Size bed	2	En-suite bathroom with shower.
Swan (first floor)	King size bed	2	En-suite bathroom with shower.
Merlin (first floor)	Two single beds	2	En-suite bathroom with shower.
Total		29	





GROUND FLOOR



Entrance

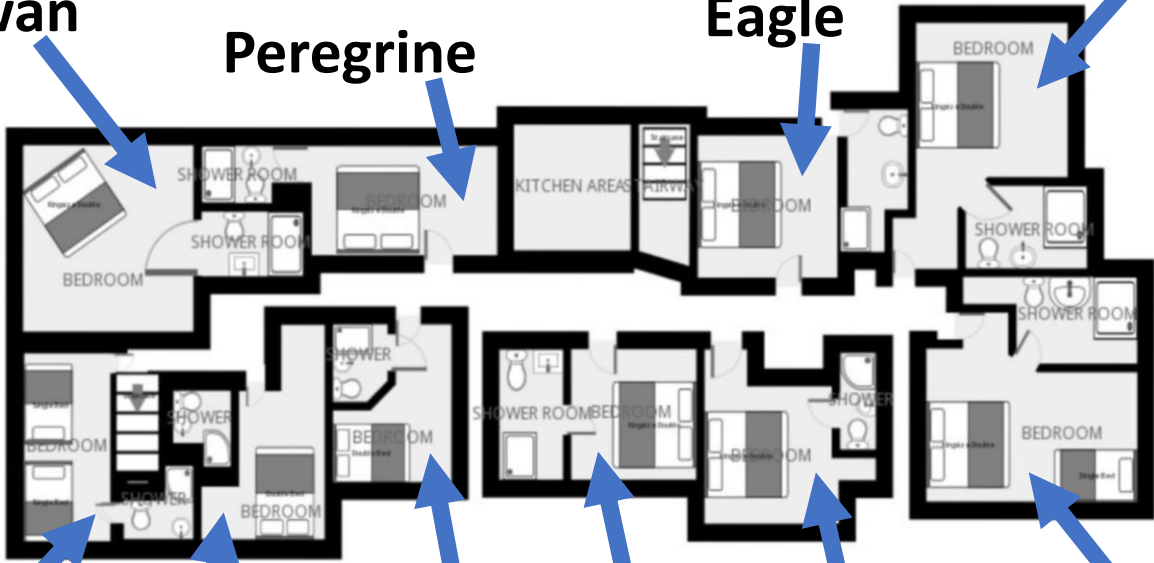
Golden Eagle

Robin

Swan

Peregrine

FIRST FLOOR



Merlin

Kestrel

Snowy Owl

Ptarmigan

Pheasant

Heron

Loch Tay



BIG HOUSE EXPERIENCE