



## BEDROOMS & LAYOUT OF GARDEN COURT, HEREFORDSHIRE

### MAIN HOUSE

The main house at Garden Court has two large lounges, a snug, formal dining room, a modern, well-equipped kitchen, breakfast room and games room. There is a separate games room and cinema room in the barn. The bedrooms have been lovingly restored to reflect the history of the property and are yet each stylishly individual. A deep, refreshing sleep is all but guaranteed in the comfortable beds after a day out in the clean, country air. The bathrooms are places of sanctuary, bringing modern comforts to this grand old property.

**Main House – sleeps 18 (or up to 24 with the use of 4 put-up beds & double sofa bed at additional cost) in 9 bedrooms**

- indicates a choice of bed configuration

Bedroom	Beds	Sleeps	Features
Bedroom 1	King-sized bed	2	Shared bathroom with bedroom 2. Additional z bed or cot can be added.
Bedroom 2	King-sized bed	2	Shared bathroom with bedroom 1.
Bedroom 3	Super king, can be divided into two single beds •	2	En-suite bathroom. Additional z bed or cot can be added.
Bedroom 4	King-sized bed	2	Shared 'Jack-and-Jill bathroom with bedroom 5. Additional z bed or cot can be added.
Bedroom 5	King-sized bed	2	Shared 'Jack-and-Jill bathroom with bedroom 4. Additional z bed or cot can be added.
Bedroom 6	King-sized bed	2	Private bathroom across the landing.
Bedroom 7	King-sized bed	2	Private bathroom across the landing. Additional z bed or cot can be added.
Bedroom 8	Super king, can be divided into two single beds •	2	Shared bathroom with bedroom 9. Additional z bed or cot can be added.
Bedroom 9	Double bed	2	Shared bathroom with bedroom 8.
Snug	Double sofa bed	2	Additional charge for sofa bed.
<b>Total</b>		<b>18-24</b>	



Up to 4 guest z-beds can be added for an additional charge of £60 per bed. There is also the option to use the double sofa bed in the snug that sleeps 2 for an additional charge of £100.

There are 3 travel cots available (please bring your own cot linen and cot mattress if using 2 or more cots).

### **COACH HOUSE (additional cost)**

The separate coach house is totally private from the main house. The coach house has a living room with large sofa, two armchairs, Freeview TV and log burner (logs provided), a fully equipped kitchen with dishwasher, induction hob, oven, microwave, fridge/freezer, kettle, toaster, dining table (seats 6), washing machine and tumble dryer. Outside there is a private patio and large enclosed mature garden plus parking for three cars.

### **Coach House – sleeps 6 (or 7 with the use of a put-up bed) in 3 bedrooms**

- indicates a choice of bed configuration

Bedroom	Beds	Sleeps	Features
Bedroom 1 (ground floor)	Super king, can be divided into two single beds •	2	Shower room with waterfall shower. Additional z bed or cot can be added.
Bedroom 2 (first floor)	King-sized bed	2	Shared shower room with waterfall shower (shared with bedroom 3).
Bedroom 3 (first floor)	King-sized bed	2	Shared shower room with waterfall shower (shared with bedroom 2).
<b>Total</b>		<b>6-7</b>	

The coach house can be booked for an additional charge of between £750 - £1,400 for weekend stays or between £1,000 - £1,750 for week-long stays (dependent on season). Please call us for full pricing details.

The additional guest z-bed can be added for an additional charge of £60. There is no charge for the cot (please bring your own cot linen).

Up to two well-behaved dogs are allowed in the coach house (charge of £20 per dog).

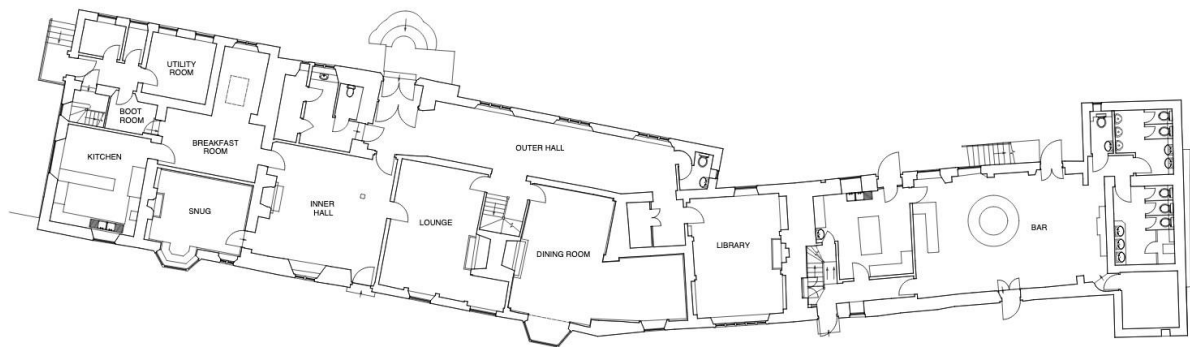
The cautionary deposit amount for the coach house is £300. This is requested just two weeks prior to your stay, and is returned shortly after, assuming no damage to the property or its contents.

The extensive grounds and entertaining options at Garden Court allow you to invite more guests for your celebrations, and additional overnight guests can even camp in the grounds for an added sense of adventure. Please ask for details.



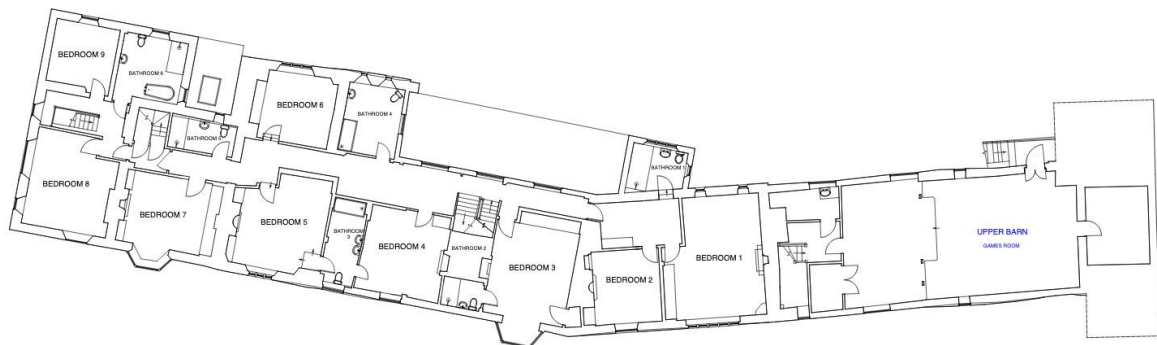
## GROUND FLOOR PLAN – main house

---



## FIRST FLOOR PLAN – main house

---



BIG HOUSE EXPERIENCE