



## LIST OF BEDROOMS AT HORSESHOE HOUSE

Horseshoe House has 8 bedrooms, each with their own individual styling. Expect quirkiness, four-posters, raised baths and funky décor.

Sleeps 16 or up to 22 using extra sofa beds available with additional charges. Each extra guest is charged at £90 per person per night (£70 pppn for full-week stays, or £65 pppn for mid-week bookings).

### BEDROOMS – sleeps 16 in 8 bedrooms

● = represents a choice in bedroom configuration

Bedroom	Beds	Sleeps	Features
Bedroom 1: Tranquillity	Super king bed (can be split into two single beds) ●	2	Use of family bathroom.
Bedroom 2: The Old Library	Super king bed (can be split into two single beds) ● Plus, large sofa bed	2-4	Large en-suite bathroom
Bedroom 3: The Serengeti	Super king bed (can be split into two single beds) ● Plus, large sofa bed	2-4	Use of family bathroom.
Bedroom 4: The Hacienda	Super king bed. Plus, large sofa bed	2-4	En-suite bathroom. Large Room.
Bedroom 5: Old MacFerdens Lair	Super-king four poster bed with a large double sofa bed	2-4	En-suite bathroom
Bedroom 6: New York, New York	Super king bed (can be split into two single beds) ● Plus, a bed sleeping 3 guests	2-5	
Bedroom 7: The Hatch	Bunk beds with two beds suitable for adults	2	
Bedroom 8: The Peacock Suite	Super king bed (can be split into two single beds) ● Plus, a single bed and a double sofa bed.	2-5	Large en-suite, bath and walk in shower. A small kitchen area with breakfast bar.
<b>Total</b>		<b>16-22</b>	



**A note about occupancy:**

Extra guests, above 16, attract an extra fee (see charges detailed above). The house has enough beds to accommodate additional guests in various configurations, but the maximum that can be accommodated is 22 guests. The main dining table can seat 22.

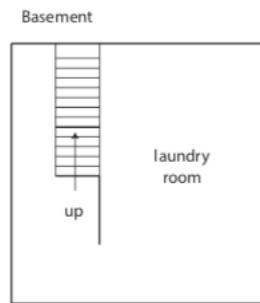
## FLOOR PLANS – Ground Floor

Plans are for illustrative purposes only.



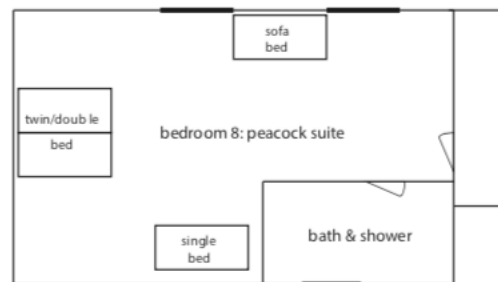
## FLOOR PLANS – Basement

---



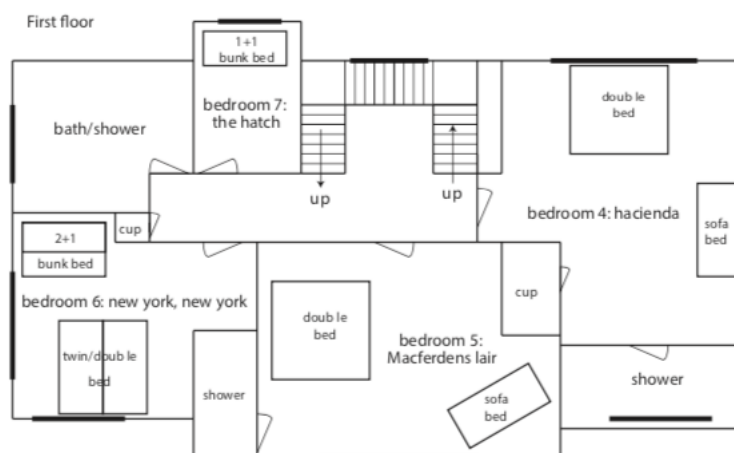
## FLOOR PLANS – First floor above Games Room

---



## FLOOR PLANS – First Floor

---



## FLOOR PLANS – Second Floor

---

