



LIST OF BEDROOMS & FLOOR PLANS AT PEN AFON

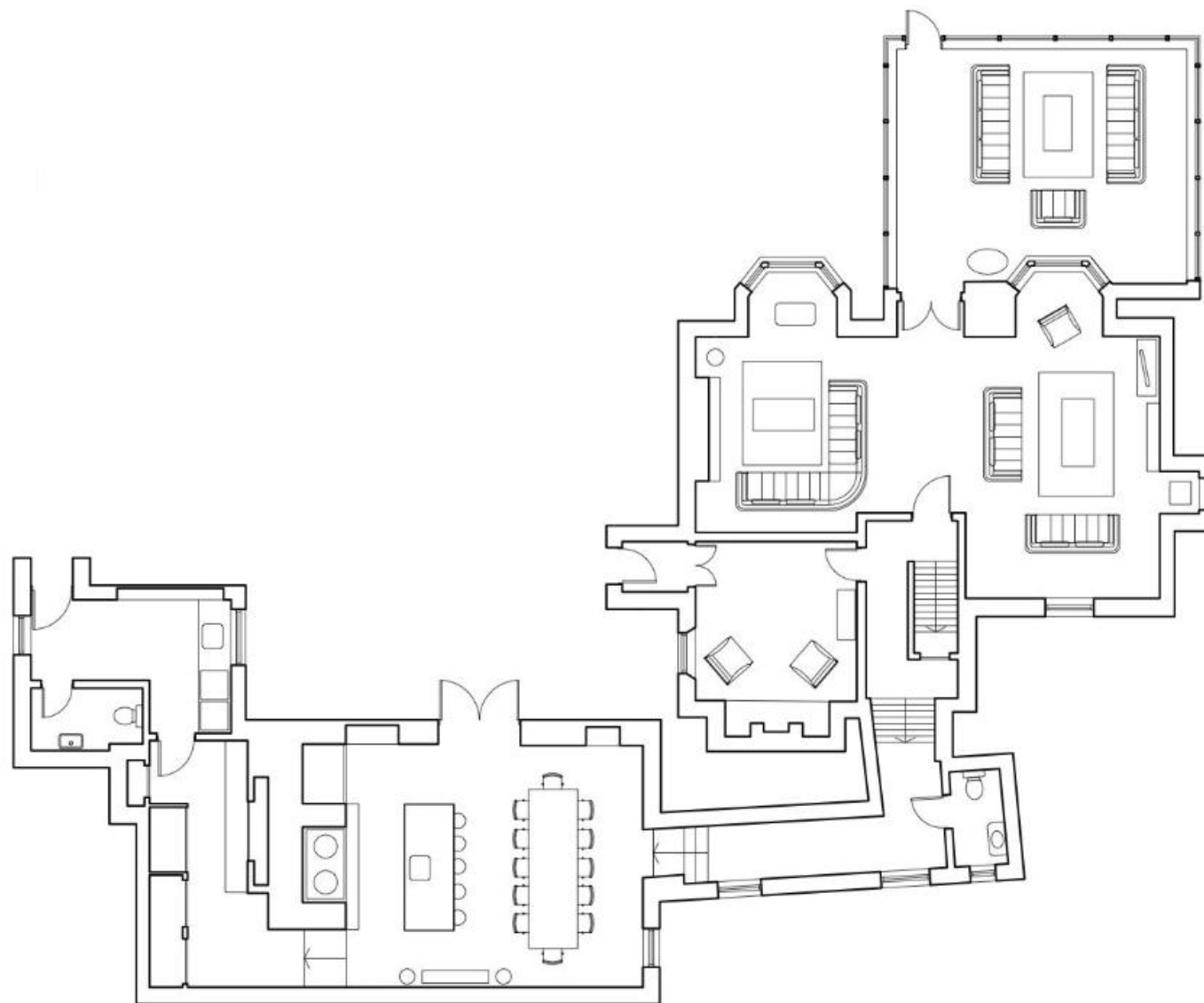
BEDROOMS – sleeps 16 in 8 bedrooms

Bedroom	Beds	Sleeps	Features
Main House			
Bedroom 1 (first floor)	Super king size bed	2	Ensuite with free-standing bath, walk-in shower, basin and WC.
Bedroom 2 (first floor)	King size bed	2	Ensuite with walk-in shower, basin and WC.
Bedroom 3 (first floor)	King size bed	2	Ensuite with shower, basin and WC.
Bedroom 4 (second floor)	King size bed	2	Shared bathroom with bath, walk-in shower, basin and WC (shared with bedrooms 5 & 6).
Bedroom 5 (second floor)	Two single beds	2	Shared bathroom with bath, walk-in shower, basin and WC (shared with bedrooms 4 & 6).
Bedroom 6 (second floor)	King size bed	2	Shared bathroom with bath, walk-in shower, basin and WC (shared with bedrooms 4 & 5).
Coach House			
Bedroom 1 (first floor)	Super king size bed	2	Bedroom in the eaves. Ensuite with double walk-in shower, basin and WC.
Bedroom 2 (first floor)	King size bed	2	Bedroom in the eaves. Ensuite with double walk-in shower, basin and WC.
Total		16	

Please note, none of the super king or king size beds are zip and link so cannot be configured as twins.

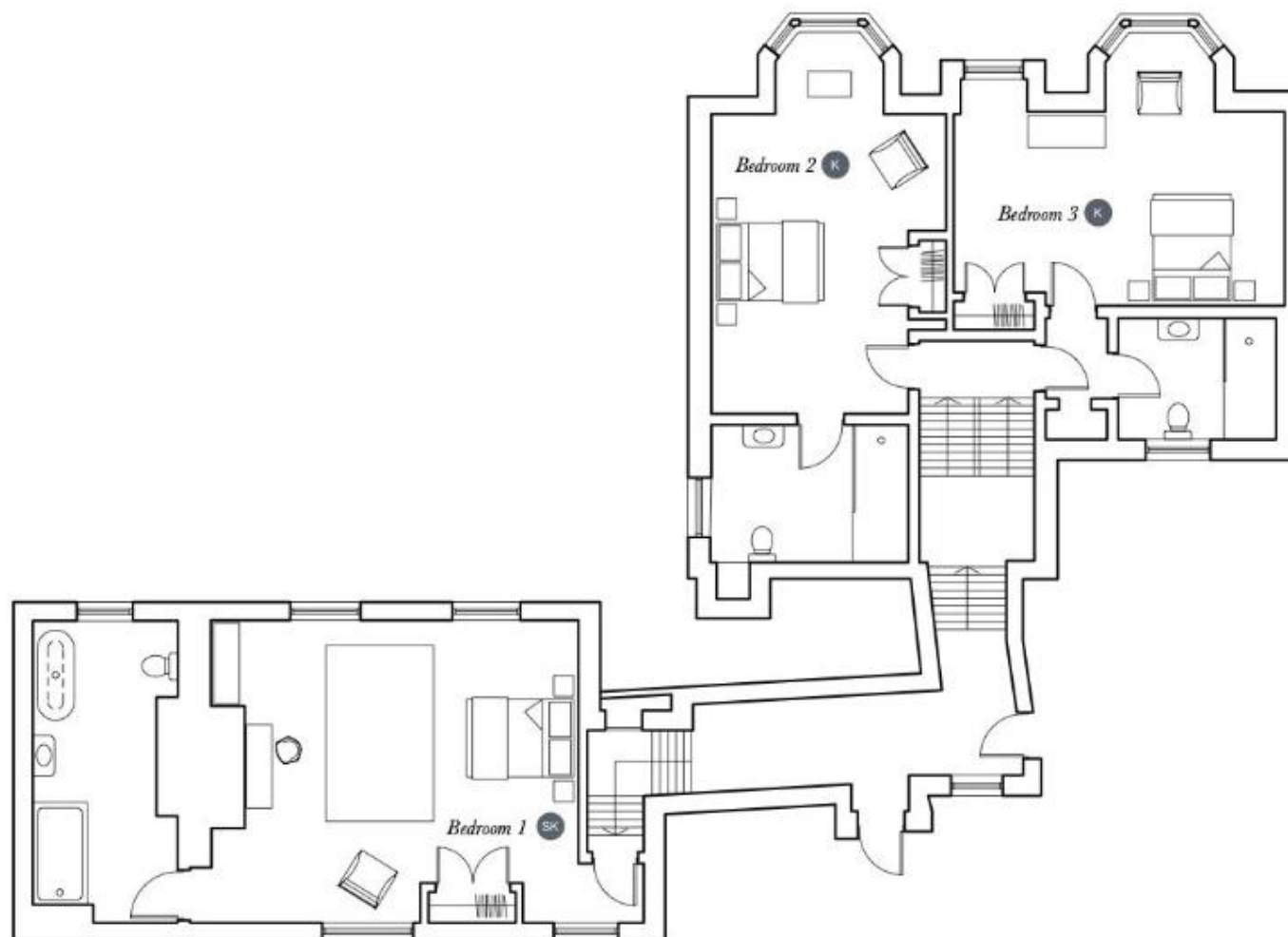


FLOOR PLANS – Main House (ground floor)



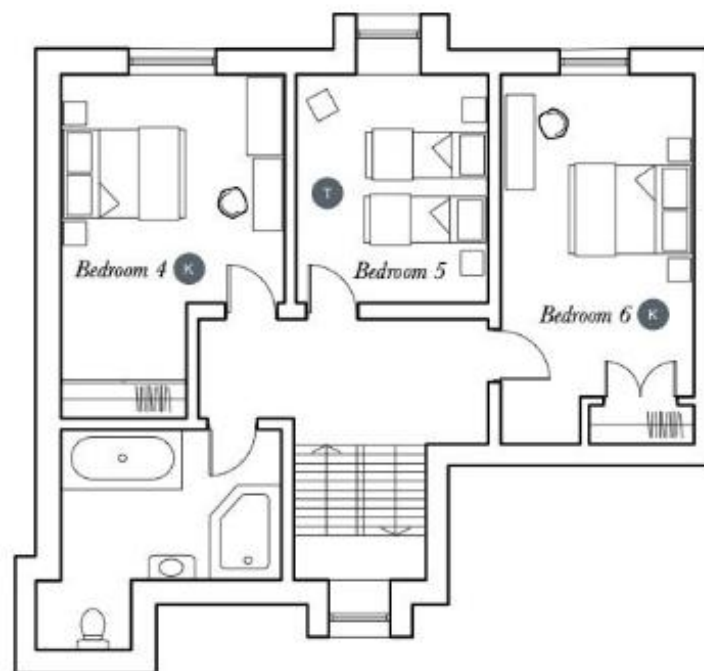
BIG HOUSE EXPERIENCE

FLOOR PLANS – Main House (first floor)



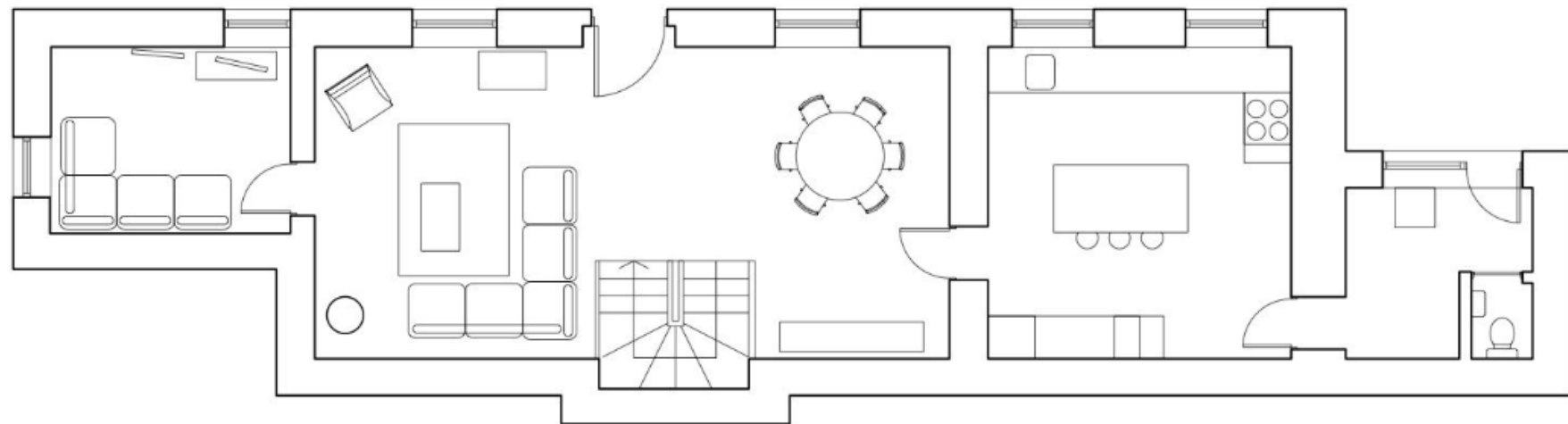
BIG HOUSE EXPERIENCE

FLOOR PLANS – Main House (second floor)



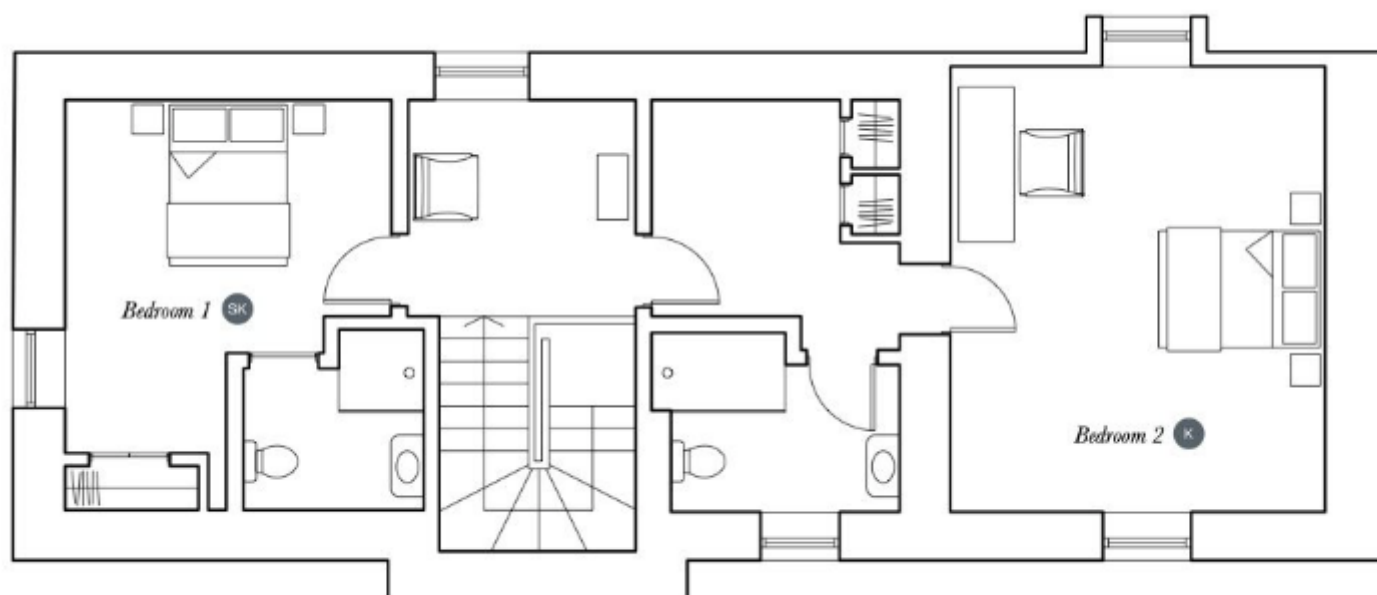
BIG HOUSE EXPERIENCE

FLOOR PLANS – Coach House (ground floor)



BIG HOUSE EXPERIENCE

FLOOR PLANS – Coach House (first floor)



BIG HOUSE EXPERIENCE