



## LIST OF BEDROOMS & FLOOR PLANS AT HYDEHAM HALL

BEDROOMS – sleeps 13 (+3) in 6 bedrooms

● indicates a choice of bed configuration

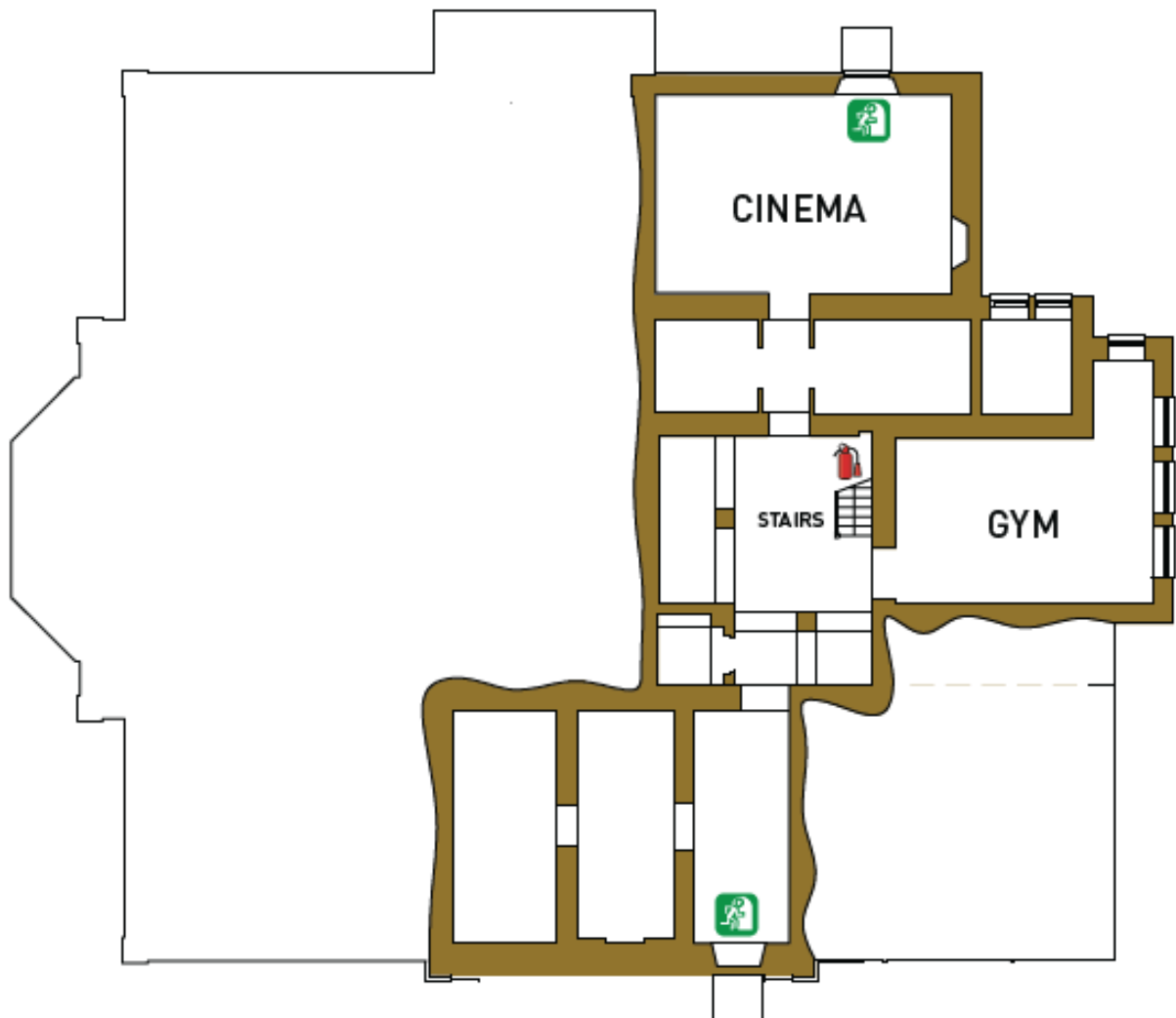
Bedroom	Beds	Sleeps	Features
Bedroom 1 - Master (First floor)	King size bed (can be divided into two single beds) ● plus one child's day bed	2 (+1)	En-suite bathroom with freestanding bath and separate double shower. Day bed only suitable for a small child. TV.
Bedroom 2 (First floor)	King size bed (can be divided into two single beds) ● plus one single bed	3	En-suite bathroom with freestanding bath and separate shower. TV.
Bedroom 3 (First floor)	King size bed (can be divided into two single beds) ●	2	En-suite shower room. TV.
Bedroom 4 (First floor)	King size bed (can be divided into two single beds) ●	2	En-suite shower room. TV.
Bedroom 5 (First floor)	2 x small double beds	2 (+2)	Shared family bathroom with bath and separate shower. TV.
Bedroom 6 (First floor)	King size bed (can be divided into two single beds) ●	2	Shared family bathroom with bath and separate shower. TV.
<b>Total</b>		<b>13 (+3)</b>	

There are also two single z-beds which can be set up by prior arrangement in bedrooms 3, 4 or 6 (max. one z-bed in each room) at no additional charge.



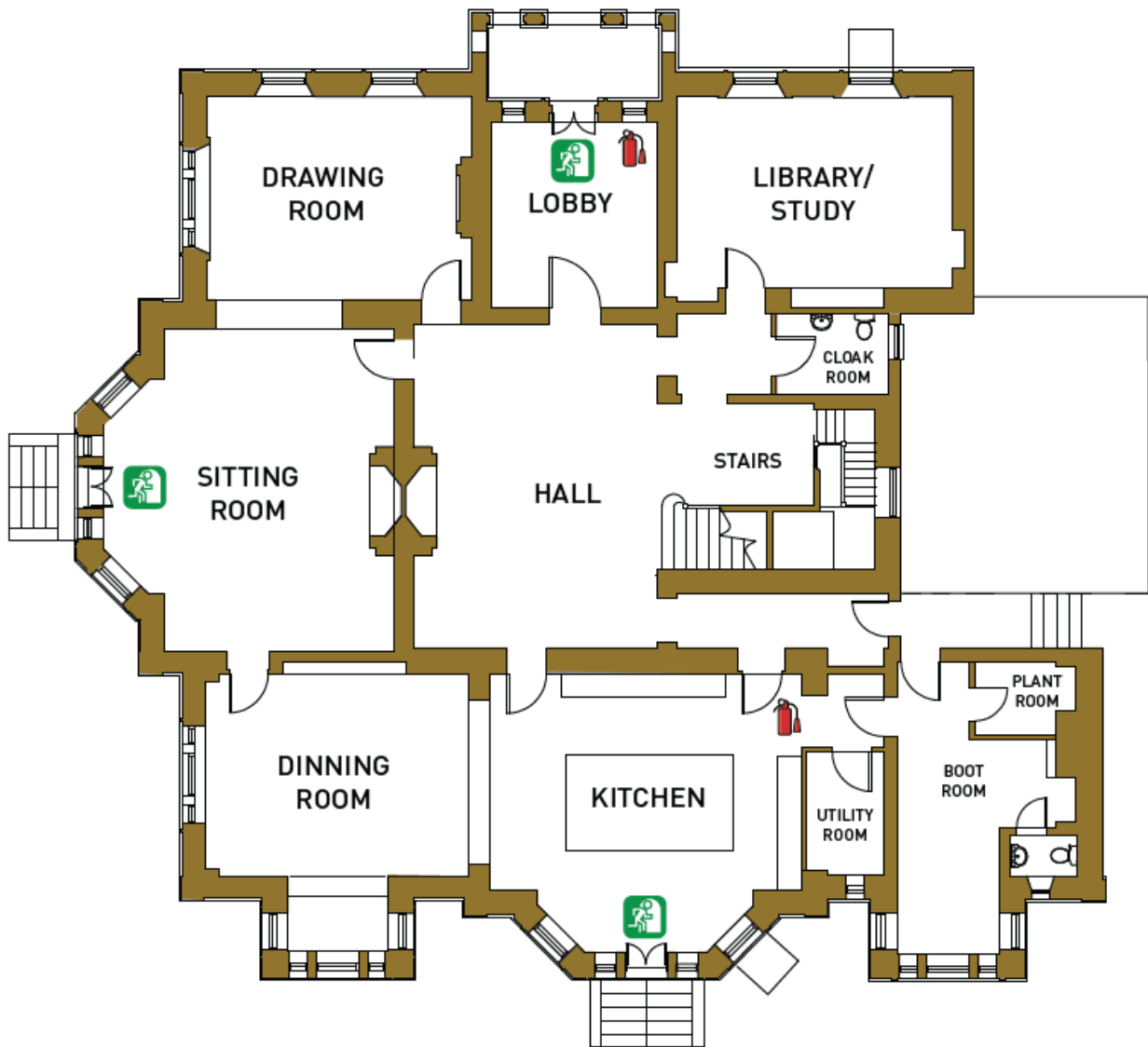
## FLOOR PLANS – basement

---



## FLOOR PLANS – ground floor

---



# FLOOR PLANS – first floor

---

