



LIST OF BEDROOMS & FLOOR PLANS AT WHITEBROOK HOUSE

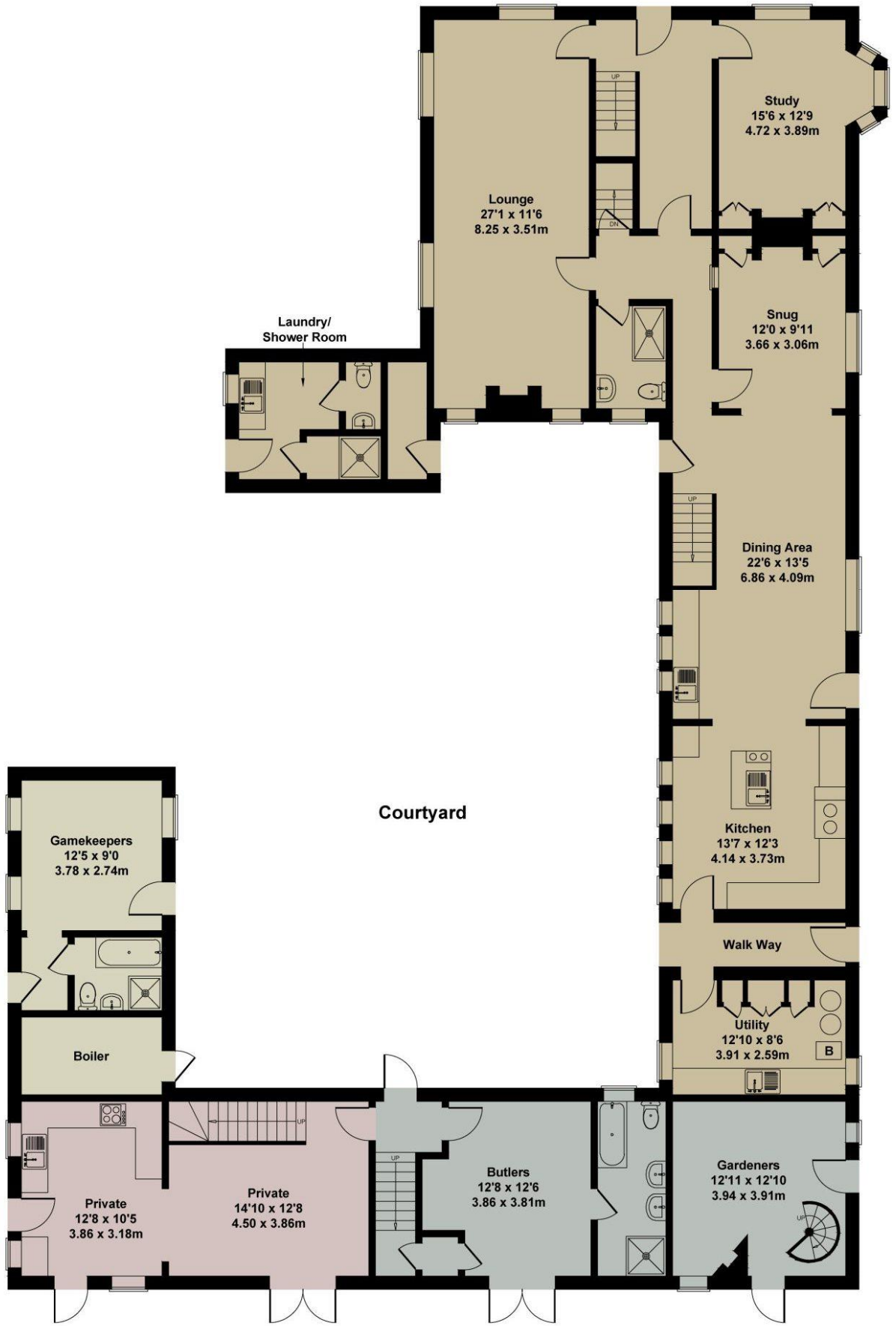
Whitebrook House has 8 beautifully styled bedrooms all with en-suite bathrooms, and an additional family bathroom.

BEDROOMS – sleeps 16-23

Bedroom	Beds	Sleeps	Features
The Master Room (Main House – First Floor)	King size bed plus single bed	3	Ensuite bathroom with bath and separate shower.
The Nursery Room (Main House – First Floor)	King size bed	2	Ensuite bathroom with bath with shower over.
The Nanny Room (Main House – First Floor)	King size bed	2	Ensuite shower room.
The Groom's Room (Main House – First Floor plus mezzanine)	King size bed plus 5 single beds (note that 2 beds are on a mezzanine level accessed via ladder) <i>*see below</i>	7	Ensuite bathroom with freestanding bath and separate shower.
The Gardener's Room (Main House – Ground Floor)	King size bed	2	Ensuite bathroom up a steep spiral staircase with freestanding bath and separate shower.
The Butler's Room (Courtyard – Ground Floor)	King size bed	2	Ensuite bathroom with bath and separate shower.
The Housekeeper's Room (Courtyard – First Floor)	Super king bed plus single bed	3	Ensuite shower room.
The Gamekeeper's Room (Courtyard – Ground Floor)	King size bed	2	Ensuite bathroom with bath and separate shower.
Total		23	

*The main bedroom has a king size bed and a single bed. The adjacent (linked) room has twin beds plus a mezzanine level with twin beds. Access to the ensuite is via the main bedroom (see floor plans below).





GROUND FLOOR





FIRST FLOOR

