



## LIST OF BEDROOMS & FLOOR PLANS AT STOWMEADOW FARM

BEDROOMS – sleeps 20 in 10 bedrooms (4 in the farmhouse, 2 in the stone barn, 3 in the cottage and 1 in the self-contained cottage annexe)

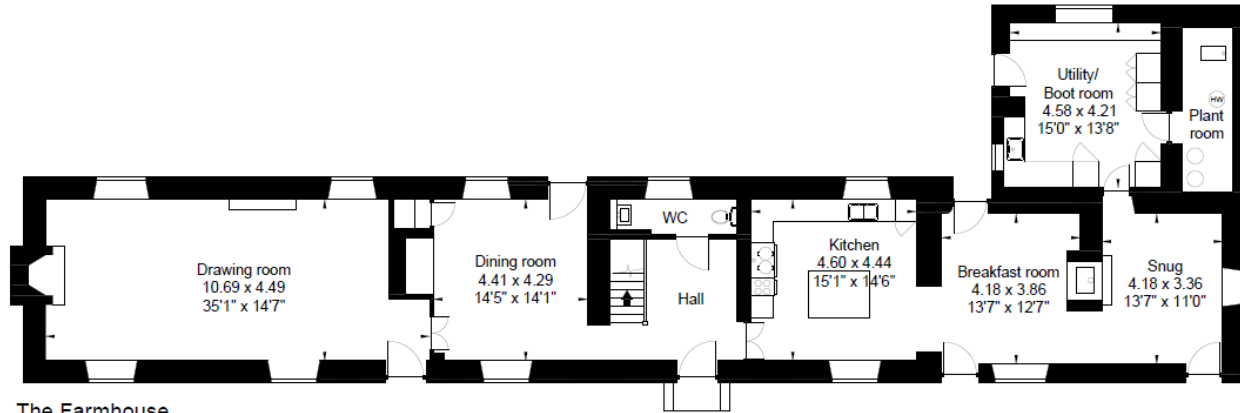
● indicates a choice of bed configuration

Bedroom	Beds	Sleeps	Features
<b>Farmhouse</b>			
Master bedroom (first floor)	Super king-size bed	2	En-suite with stand-alone bath and shower.
Guest 1 (first floor)	Super king-size bed	2	En-suite with shower.
Guest 2 (second floor)	Super king-size bed (can be divided into two single beds) ●	2	En-suite with stand-alone bath and shower.
Guest 3 (second floor)	Super king-size bed (can be divided into two single beds) ●	2	En-suite with shower.
<b>Stone Barn</b>			
Master bedroom (first floor)	Super king-size bed	2	In-room bath and en-suite shower.
Guest (first floor)	Super king-size bed (can be divided into two single beds) ●	2	Bedroom overlooks living area. En-suite with shower.
<b>Cottage</b>			
Master bedroom (first floor)	Super king-size bed	2	En-suite with shower.
Guest 1 (first floor)	King-size bed	2	En-suite with bath with shower over.
Guest 2 (ground floor)	King-size bed	2	En-suite with shower, accessed via utility room.
Self-contained annexe (first floor)	Double bed	2	Accessed via external stone steps. En-suite with shower. Kitchenette with small oven, microwave, fridge, kettle and toaster.
<b>Total</b>		<b>20</b>	



# FLOOR PLANS - FARMHOUSE

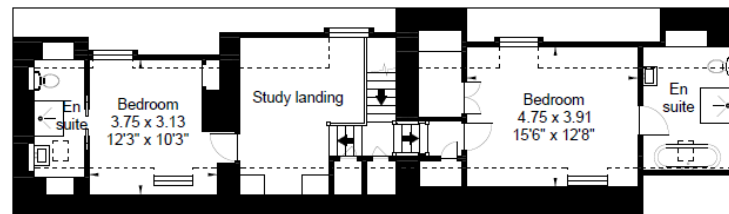
---



The Farmhouse  
Ground Floor



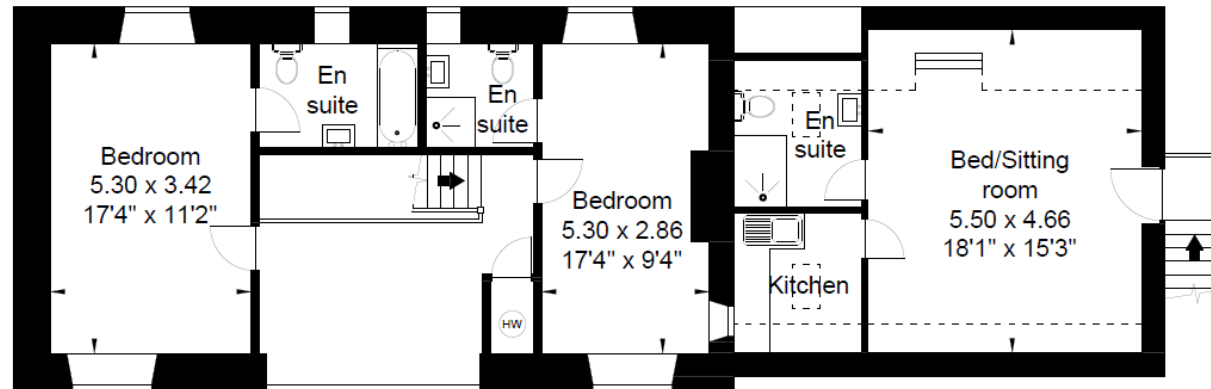
The Farmhouse  
First Floor



The Farmhouse  
Second Floor

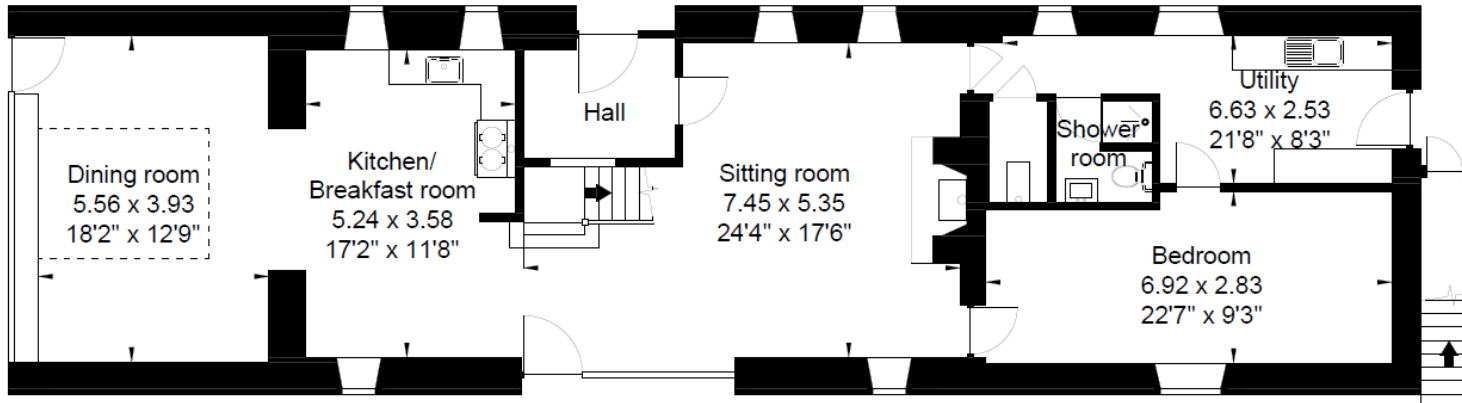


# FLOOR PLANS - COTTAGE



The Cottage  
First Floor

The Annexe

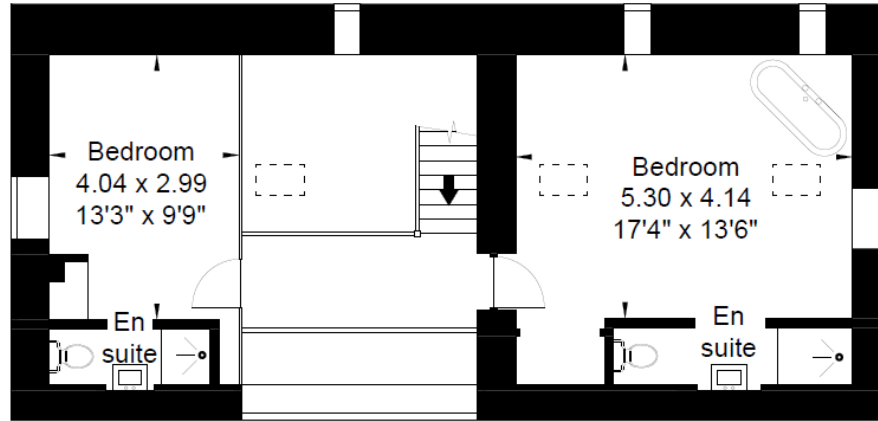


The Cottage  
Ground Floor

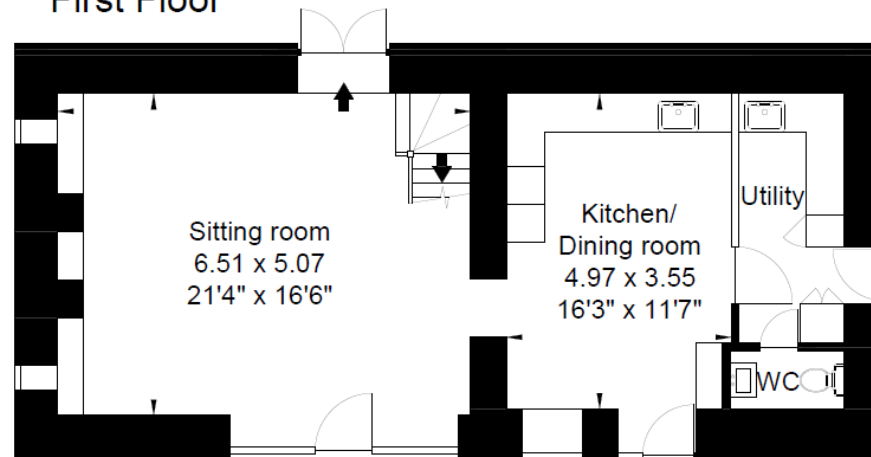


## FLOOR PLANS – STONE BARN

---



The Stone Barn  
First Floor

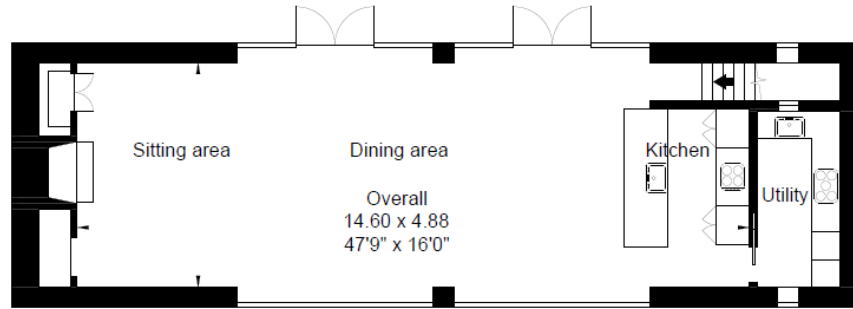


The Stone Barn  
Ground Floor

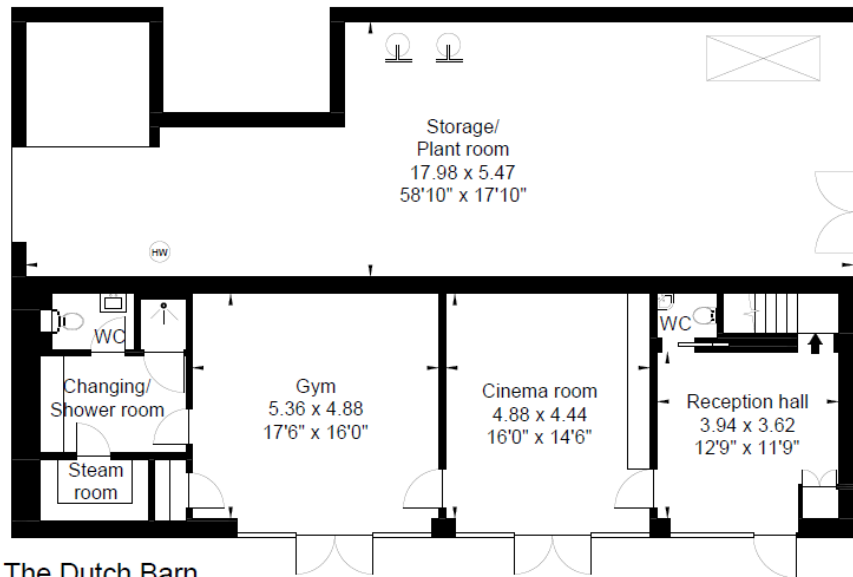


# FLOOR PLANS – DUTCH BARN

---



The Dutch Barn  
First Floor



The Dutch Barn  
Ground Floor

