



LIST OF ROOMS & FLOOR PLANS AT LONGHOLLOW HOUSE

[Longhollow House](#) is a stunning, self-contained house offering six en suite guest bedrooms and spa facilities. The best thing is that you get to have the whole place to yourselves. Here is a list of all the main rooms in the house:

LIVING & ENTERTAINMENT SPACES

- Open plan lounge, dining room and well-equipped kitchen
- Steam and sauna house complete with outdoor plunge pool and hot tub
- Trailhead Lodge combining a bar with dartboard, games, wood burner and comfy sofas.

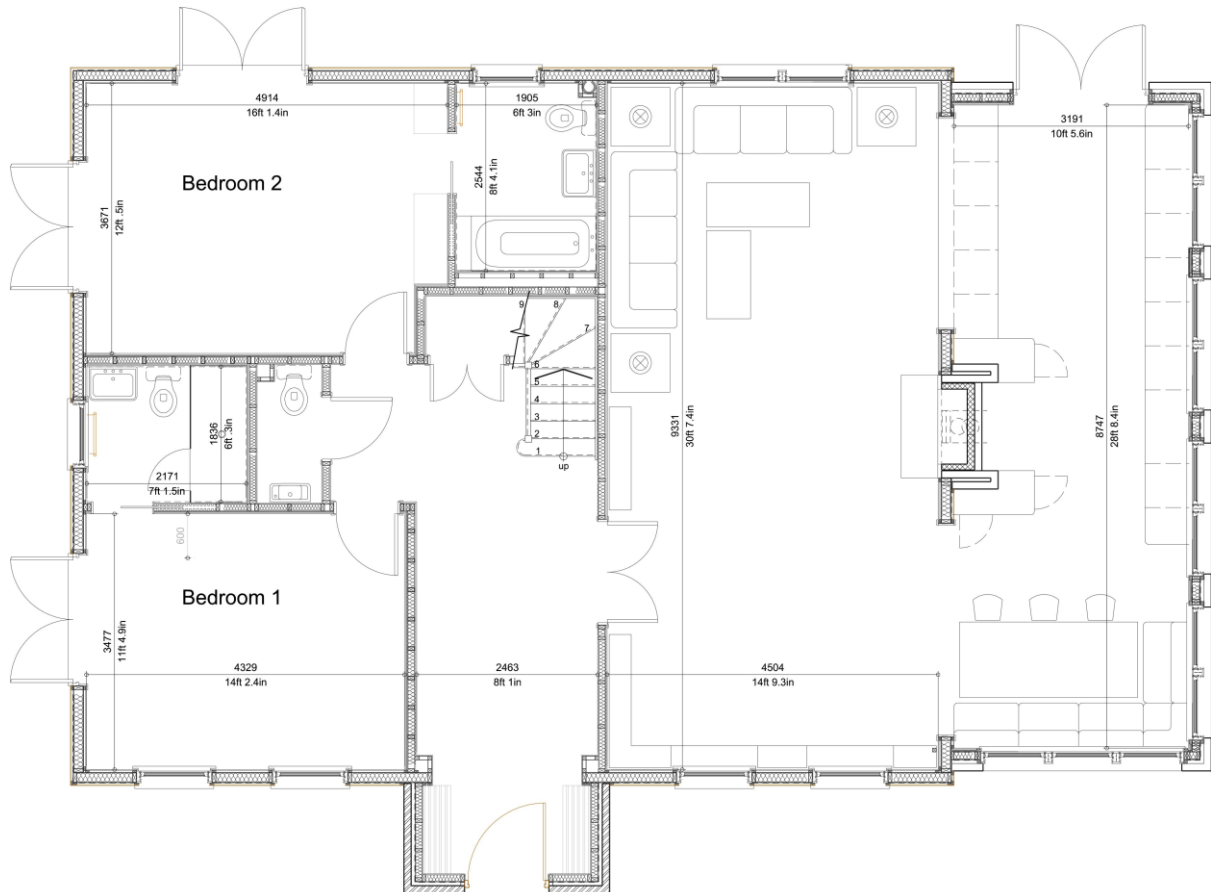
BEDROOMS – sleeps 12* in 6 bedrooms

Bedroom	Beds	Sleeps	Features
Bedroom 1 (Ground floor)	Super king	2	En suite with shower
Bedroom 2 (Ground floor)	Super king	2	En suite with shower
Bedroom 3 (First floor)	King sized bed	2	En suite with shower
Bedroom 4 (First floor)	King sized bed	2	En suite with shower
Bedroom 5 (First floor)	King sized bed	2	En suite with shower
Bedroom 6 (First floor)	King sized bed	2	En suite with large bath
Total		12*	

*There are three children's z-beds which can be added to any of the bedrooms for an additional cost of £25 per bed. Please note the maximum capacity for the house is still 12 guests.



FLOOR PLANS



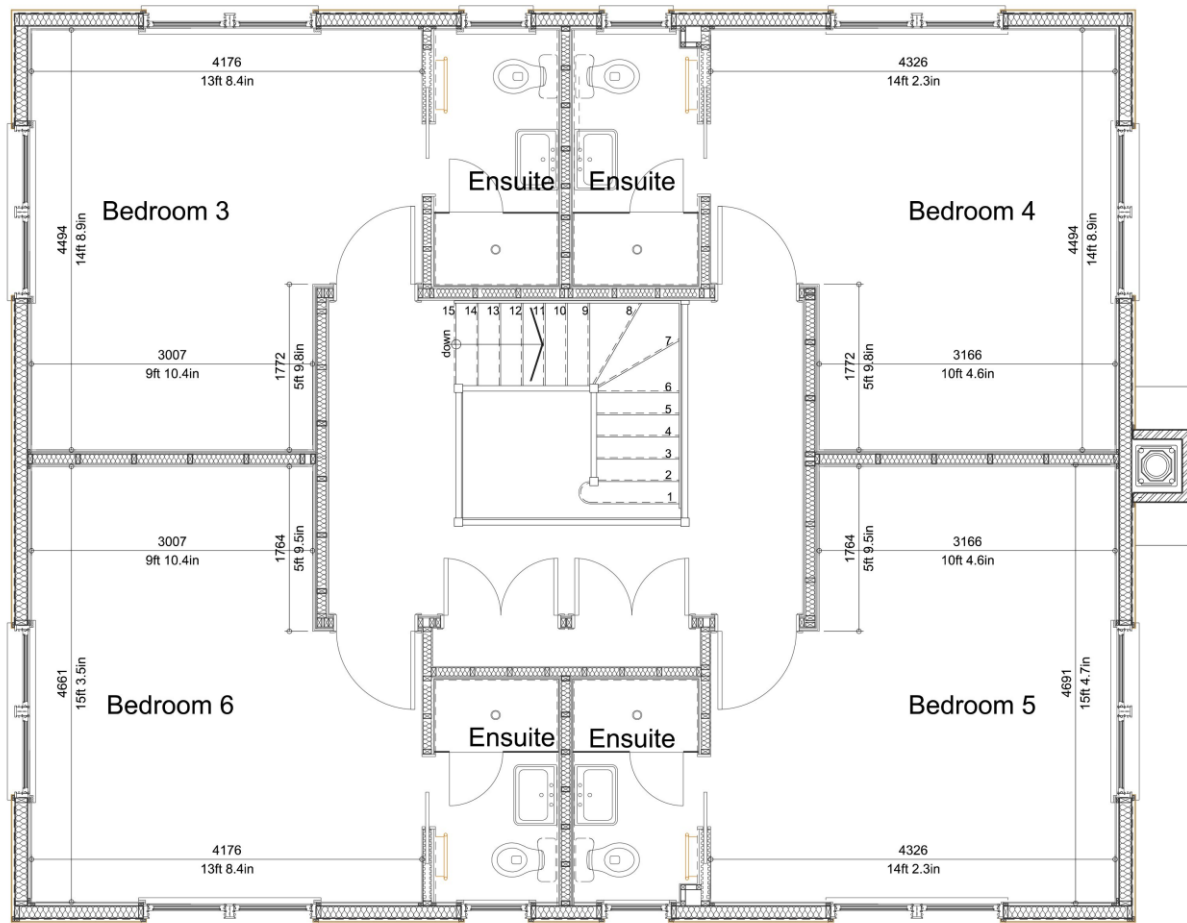
Ground Floor Plan

Gross Grnd FL internal floor area 141m²



BIG HOUSE EXPERIENCE

FLOOR PLANS



First Floor Plan

Gross 1st FI internal floor area 110m²



BIG HOUSE EXPERIENCE