



## LIST OF BEDROOMS & FLOOR PLANS AT RIVERBANK INN

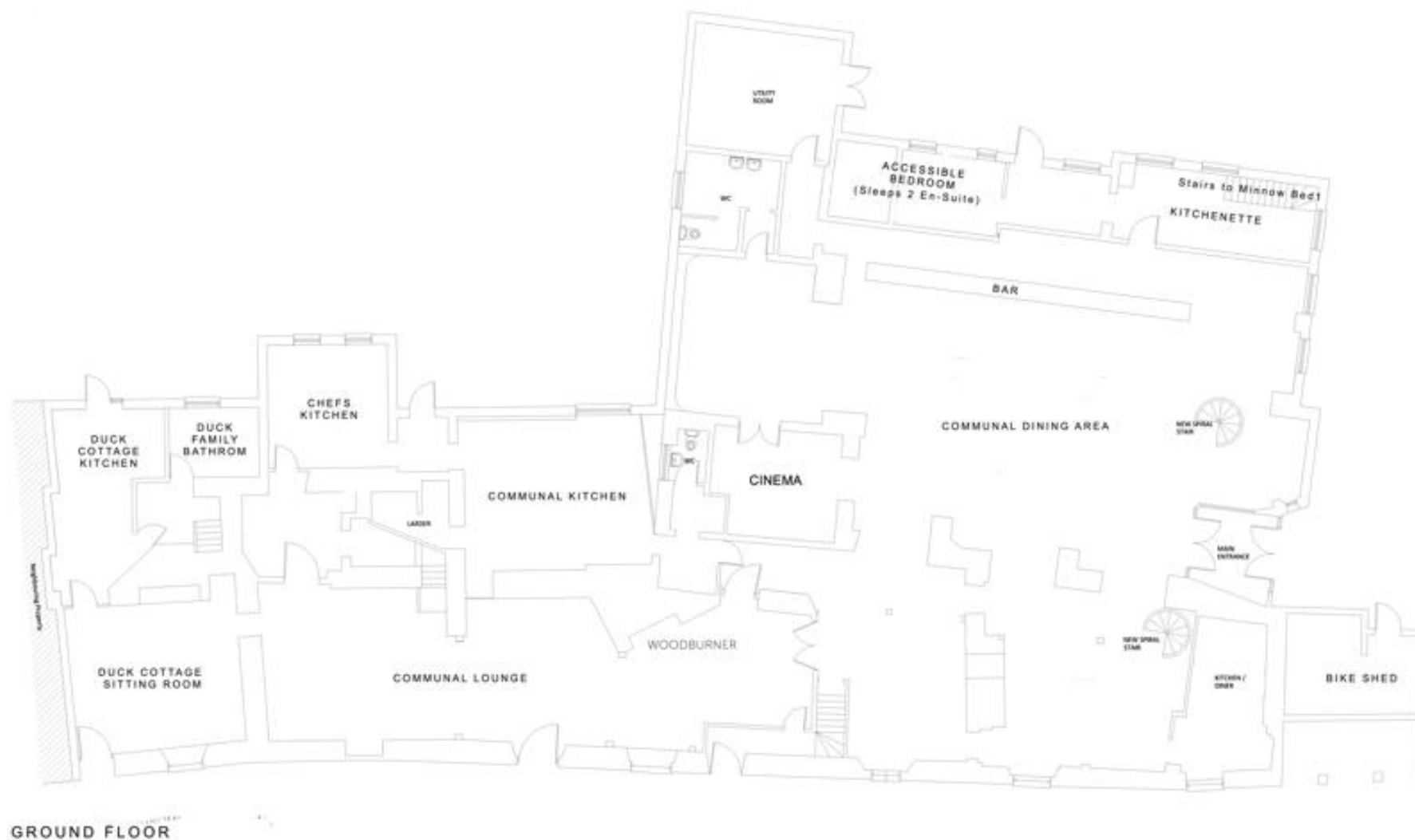
### BEDROOMS – sleeps 29 in 12 bedrooms

● indicates a choice of bed configuration

Bedroom	Beds	Sleeps	Features
Duck 1 (First floor)	Double bed, plus king size mattress on mezzanine	4	Shared bathroom, lounge and kitchen (on ground floor) with Duck 2. River view.
Duck 2 (First floor)	Triple bunk bed	3	Shared bathroom, lounge and kitchen (on ground floor) with Duck 1.
Heron 1 (First floor)	Super king size bed, plus king size mattress on mezzanine	4	En-suite. River view.
Heron 2 (First floor)	Super king size bed	2	En-suite. River view.
Kingfisher 1 (First floor)	Double bed	2	En-suite shower. River view.
Kingfisher 2 (First floor)	Double bed	2	En-suite.
Kingfisher 3 (First floor)	Twin beds	2	Freestanding bath. River view.
Minnow 1 (First floor)	King size bed	2	En-suite. Kitchenette (on ground floor). Optional adjoining door to Minnow 2.
Minnow 2 (First floor)	King size bed (can be divided into two single beds) ●	2	En-suite. Optional adjoining door to Minnow 1.
Otter 1 (First floor)	King size bed (can be divided into two single beds) ●	2	Jack and Jill en-suite with Otter 2.
Otter 2 (First floor)	King size bed (can be divided into two single beds) ●	2	Jack and Jill en-suite with Otter 1.
Accessible Bedroom (Ground floor)	Twin beds	2	En-suite accessible wet room.
<b>Total</b>		<b>29</b>	



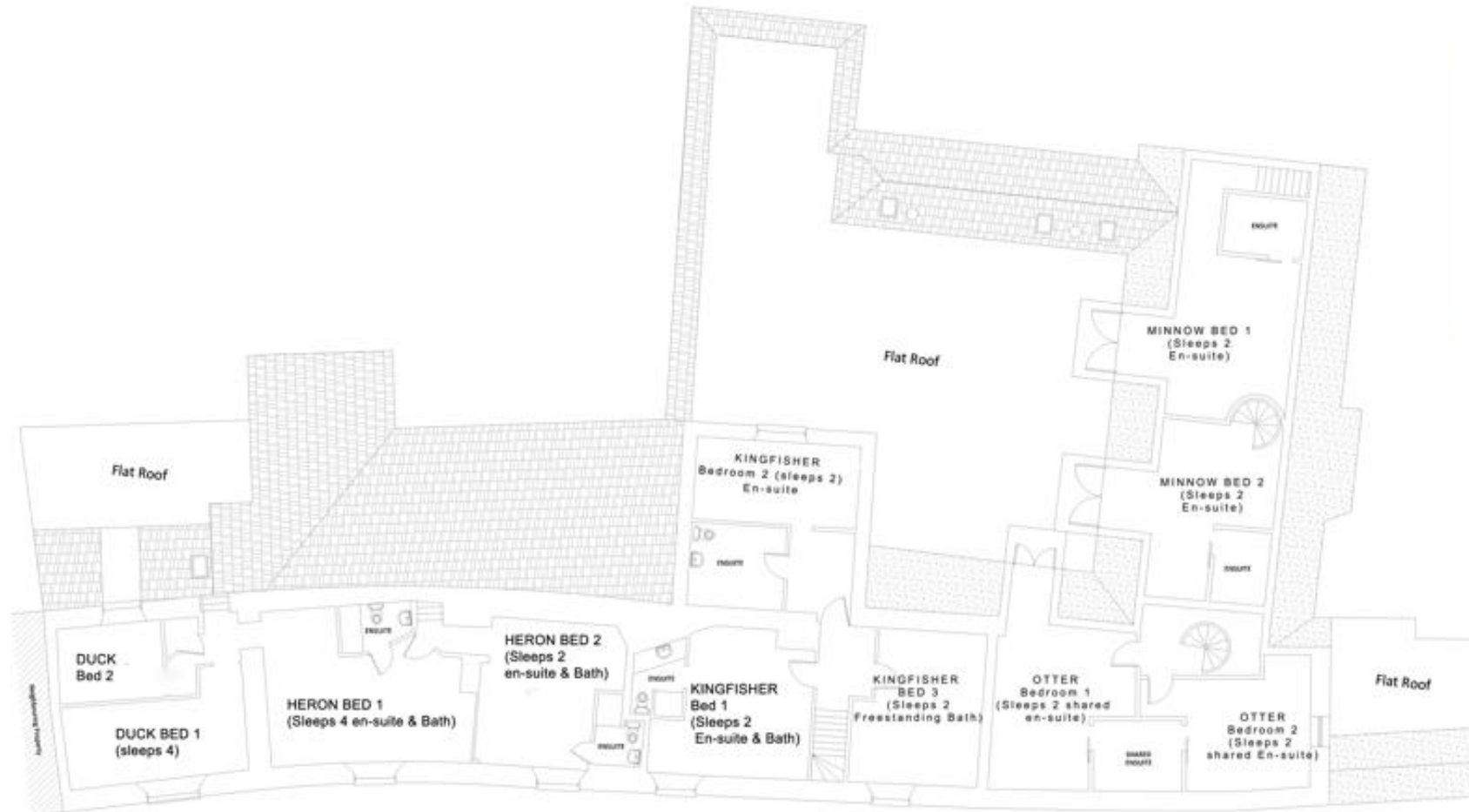
## GROUND FLOOR PLAN



BIG HOUSE EXPERIENCE

## FIRST FLOOR PLAN

---



FIRST FLOOR



BIG HOUSE EXPERIENCE