



## LIST OF ROOMS AT HALLWOOD HOUSE, DERBYSHIRE

Hallwood House offers stylish accommodation set over three floors with ten bedrooms and eight bathrooms (total space of 450 square metres). The property also has the added benefit of underfloor heating on the ground floor and in all the bathrooms (radiators in other upstairs rooms).

### LIVING & ENTERTAINING SPACES

- Drawing Room - with sofas for 20 people and an open fire.
- Television Room - with sofas for 12 people, Sky TV, and a log burner.
- Games Room - with a pub-size pool table.

### KITCHEN & DINING AREAS

- Dining Room - with tables and seating for 20 people.
- Large Kitchen - this is a stunning space all under glass and nestled between the two wings of the building. The kitchen and utility room provide everything you'll need for a comfortable stay. These include:
  - Oven, Hob, Microwave, Dishwasher, Toaster, Kettle, Fridge, Freezer, Nespresso Coffee Machine, Washing Machine and Dryer.
  - Cookware for 20 people
  - Glasses for 30 people (champagne, wine, high ball, pint glasses)
  - Crockery and cutlery for up to 30 people (including large, medium and small plates, pasta and cereal bowls, cups, mugs etc.)
  - Dishwasher tablets, washing up liquid, washing up cloths, bin bags, compost holder, tea towels and oven gloves.

### OUTDOORS

There is a large garden and terrace that is bathed in sun throughout the day. Outdoor tables and chairs are provided for 20 people as well as a charcoal BBQ. There is also a children's playground. There are comfortable outdoor chairs on the Ha-Ha, ideally placed to watch the sunset. The hot tub is log fired and seats up to 10 people at a time.



## BEDROOMS – sleeps 20 in 10 bedrooms

---

There are ten bedrooms spread over the first and second floors.

All bedrooms have a chest of drawers, wardrobes, and bedside tables for you to use during your stay. Bed linen and towels are included.

| Bedroom                      | Beds  | Sleeps    |
|------------------------------|---|-----------|
| Bedroom 1<br>(First Floor)   | Emperor-sized bed   | 2         |
| Bedroom 2<br>(First Floor)   | King-sized bed  | 2         |
| Bedroom 3<br>(First Floor)   | Two single beds   | 2         |
| Bedroom 4<br>(First Floor)   | King-sized bed  | 2         |
| Bedroom 5<br>(First Floor)   | King-sized bed<br><br>Bedroom 5 interconnects with bedroom 6 with one entrance from the corridor. These two rooms are ideal as a family suite.  | 2         |
| Bedroom 6<br>(First Floor)   | Two single beds<br><br>Bedroom 6 interconnects with bedroom 5 with one entrance from the corridor. These two rooms are ideal as a family suite. | 2         |
| Bedroom 7<br>(Second Floor)  | King-sized bed  | 2         |
| Bedroom 8<br>(Second Floor)  | Two single beds   | 2         |
| Bedroom 9<br>(Second Floor)  | Two single beds   | 2         |
| Bedroom 10<br>(Second Floor) | King-sized bed  | 2         |
| <b>Total</b>                 |   | <b>20</b> |



## BATHROOMS

There are two cloak rooms, six bathrooms and two half-bathrooms spread over the three floors:

### *Ground Floor*

- Cloakroom 1 - with toilet and sink
- Cloakroom 2 - with toilet and sink

### *First Floor*

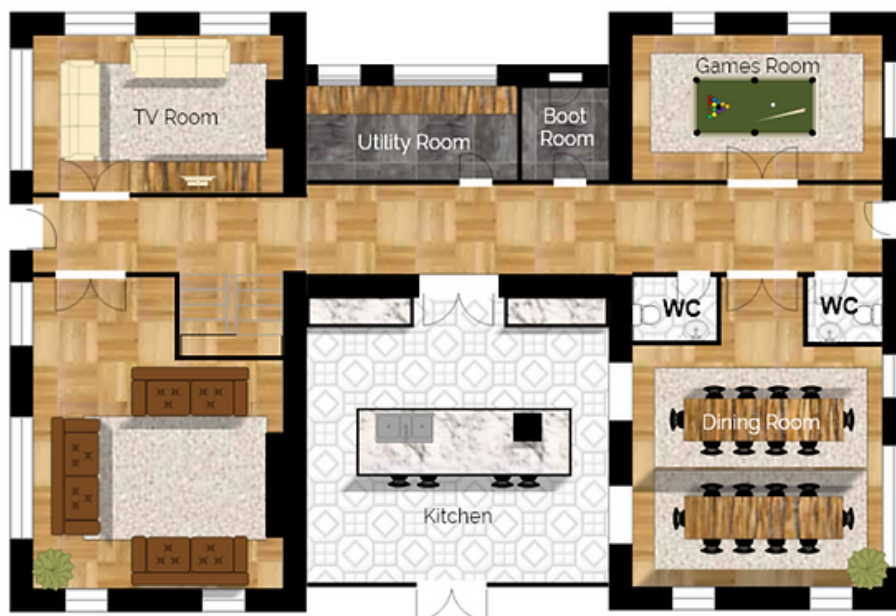
- Bathroom 1 - Jack-and-Jill bathroom with large walk-in shower, double sink unit, and toilet
- Bathroom 2 - Large bathroom with a cast iron bath to relax in, sink unit, and toilet
- Bathroom 3 - Walk-in shower, sink unit, and toilet

### *Second Floor*

- Bathroom 4 - Shower over a bath, toilet, and sink unit
- Bathroom 5 - Shower room with toilet and sink unit
- Bathroom 6 - Shower with toilet and sink unit

## GROUND FLOOR PLAN

---



THE HALL

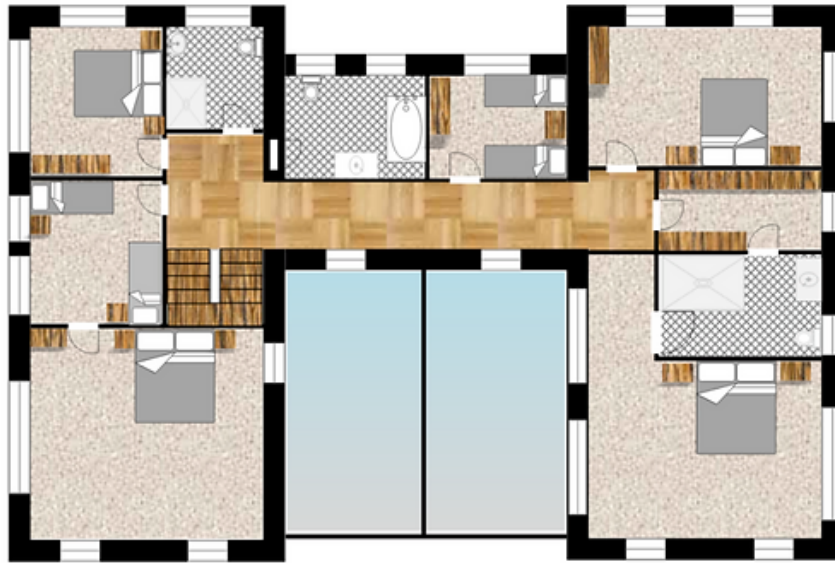
GROUND FLOOR  
- FLOOR PLAN -



BIG HOUSE EXPERIENCE

# FIRST FLOOR PLAN

---



THE HALL



FIRST FLOOR  
- FLOOR PLAN -

# SECOND FLOOR PLAN

---



THE HALL



SECOND FLOOR  
- FLOOR PLAN -

