



## LIST OF BEDROOMS & FLOOR PLANS AT HIGHLANDS HOUSE

BEDROOMS – sleeps 18 (+3)\* in 9 bedrooms

● indicates a choice of bed configuration

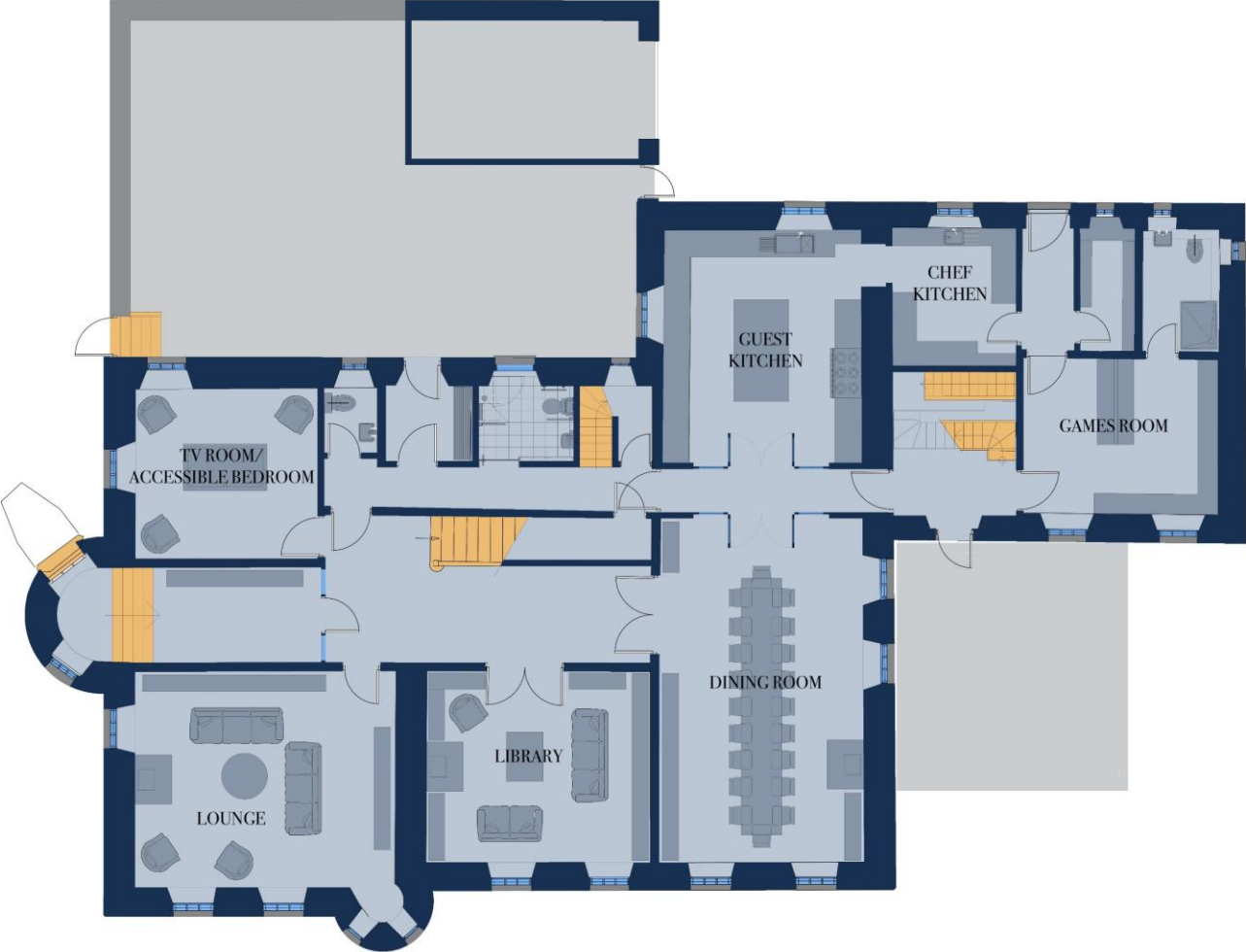
Bedroom	Beds	Sleeps	Features
Bushta (first floor)	King size four poster bed	2	Master bedroom. Ensuite bathroom with bath and separate turret shower. Views out to Loch of Bushta and Peedie Sands. Space for a travel cot.
Mey (first floor)	Super king size bed (can be divided into two single beds) ●	2	Ensuite bathroom with bath with hand-held shower. Views out to Mey. Space for a travel cot.
Hoy (first floor)	King size bed (can be divided into two single beds) ●	2	Ensuite bathroom with walk-in shower. Limited floor space. Views out to Orkney.
Holborn (first floor)	King size bed	2	Ensuite bathroom with walk-in shower. Views out to Holborn Head. Space for a travel cot.
Morven (first floor)	Super king size bed, plus extra day bed (suitable for a child only)	2 (+1)*	Day bed can be made up on request. Ensuite bathroom with walk-in shower. Views out to Morven Hill. Space for a travel cot.
Olig (first floor)	Queen size bed	2	Ensuite bathroom with walk-in shower. Views out to Olig Estate. Space for a travel cot.
Stroma (first floor)	King size bed (can be divided into two single beds) ●	2	Small room. Shared bathroom with bath and hand-held shower (shared with St Johns bedroom).
St Johns (first floor)	Two single beds	2	Small room. Shared bathroom with Stroma bedroom.
Dwarwick (first floor)	Super king size bed	2	Ensuite bathroom with bath with hand-held shower. Views out to Dwarwick Pier and Dunnet Bay. Space for a travel cot.
TV Room (ground floor)	Double sofa bed	(+2)*	The sofa bed in the TV room can be made up on request, with nearby accessible toilet and wet room for anyone with limited mobility.
<b>Total</b>		<b>18 (+3)*</b>	

\*The day bed and double sofa bed can be made up on request (free of charge).



FLOOR PLANS – ground floor

---



FLOOR PLANS – first floor

---

