



LIST OF BEDROOMS & FLOOR PLANS AT BROMFIELD HALL

BEDROOMS – sleeps 20-22 in 10 bedrooms

● indicates a choice of bed configuration

Bedroom	Beds	Sleeps	Features
1. Wistaria First floor	Queen size double bed (1600 x 2000)	2	Superior double. Ensuite with sunken bath and power shower over. TV and mini fridge.
2. Gwyddfif (Honeysuckle) First floor	Antique French double sleigh bed	2	Junior suite. Ensuite with double ended bath and separate walk-in power shower. TV and mini fridge.
3. Llawryf (Bay) First floor	Queen size double bed (1600 x 2000)	2	Junior suite. Raised seating area with bay window. Ensuite with corner bath and separate walk-in power shower. Separate loo. TV and mini fridge.
4. Y Goeden Geirios (Cherry Tree) First floor	Twin beds	2	Standard twin. Ensuite with bath and power shower over. TV and mini fridge.
5. Yr Egroes (Rose Hip) First floor	Double bed (1500 x 2000)	2	Standard double. Ensuite with bath and power shower over. TV and mini fridge.
6. Celyn (Holly) Second floor	Double bed (1400 x 2000)	2	Standard double. Ensuite with bath and separate walk-in power shower. TV and mini fridge.
8. Ffawyddden (Beech Tree) Second floor	King size bed (1800 x 2000), can be divided into two single beds ● plus single sofa bed	2 (+1)	Suite. Main room with TV. Separate sitting room with single sofa bed, TV and mini fridge. Ensuite with bath and power shower over. Separate loo.
9. Ywen (Yew) Second floor	Queen size double bed (1600 x 2000)	2	Superior double. Ensuite with double ended bath and separate walk-in power shower. TV and mini fridge.

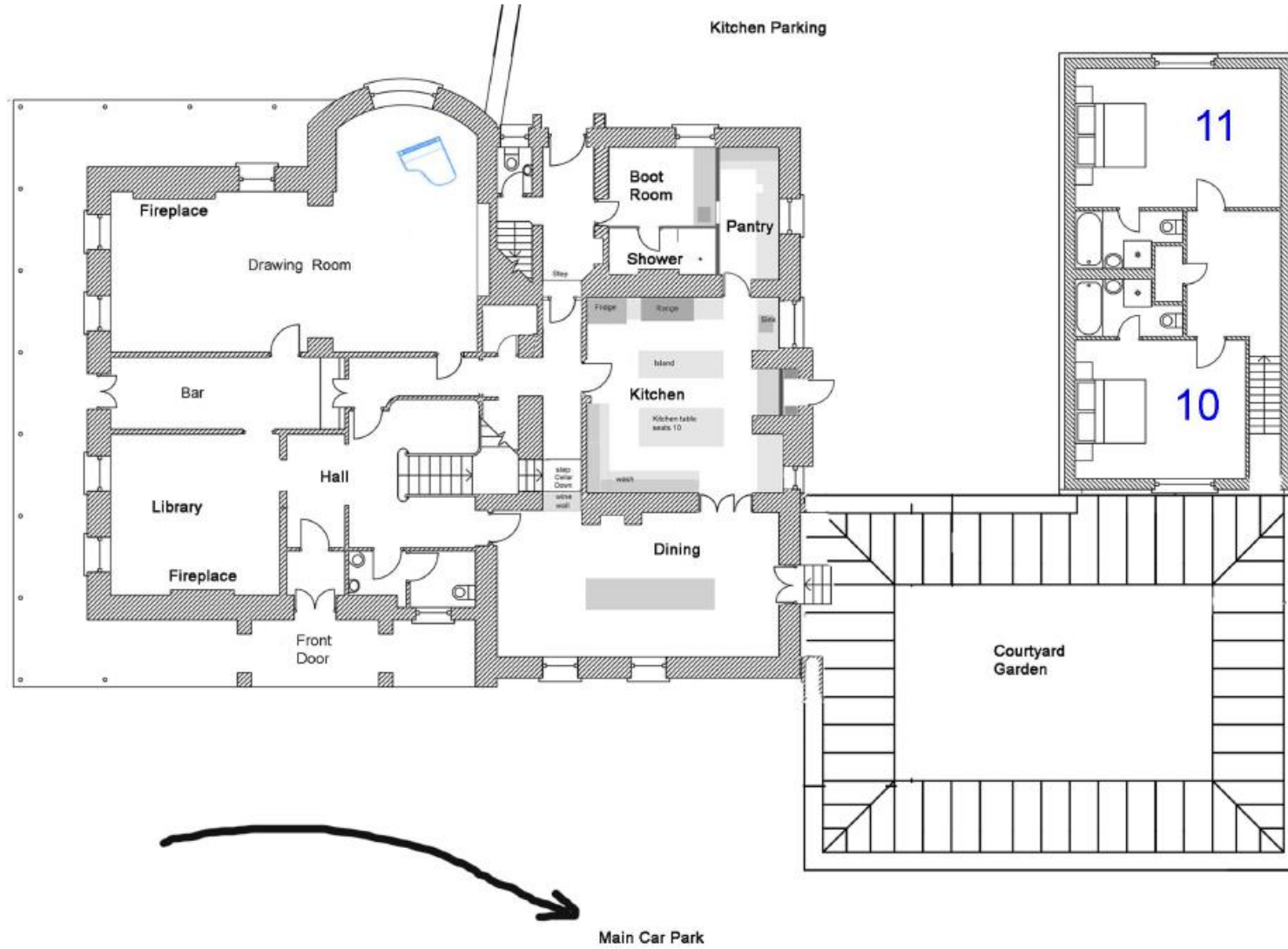


Bedroom	Beds	Sleeps	Features
10. Tresi Aur (Laburnum) Annexe first floor	Antique French queen size bed (1600 x 2000)	2	Superior double. Ensuite with bath and separate walk-in power shower. TV and mini fridge.
11. Clych'aur Gog (Bluebell) Annexe first floor	King size bed (1800 x 2000), can be divided into two single beds) ● plus extra put-up bed	2 (+1)	Superior twin/double. Ensuite with bath and separate walk-in power shower. TV and mini fridge.
Total		20-22	

Note there is no room number 7.

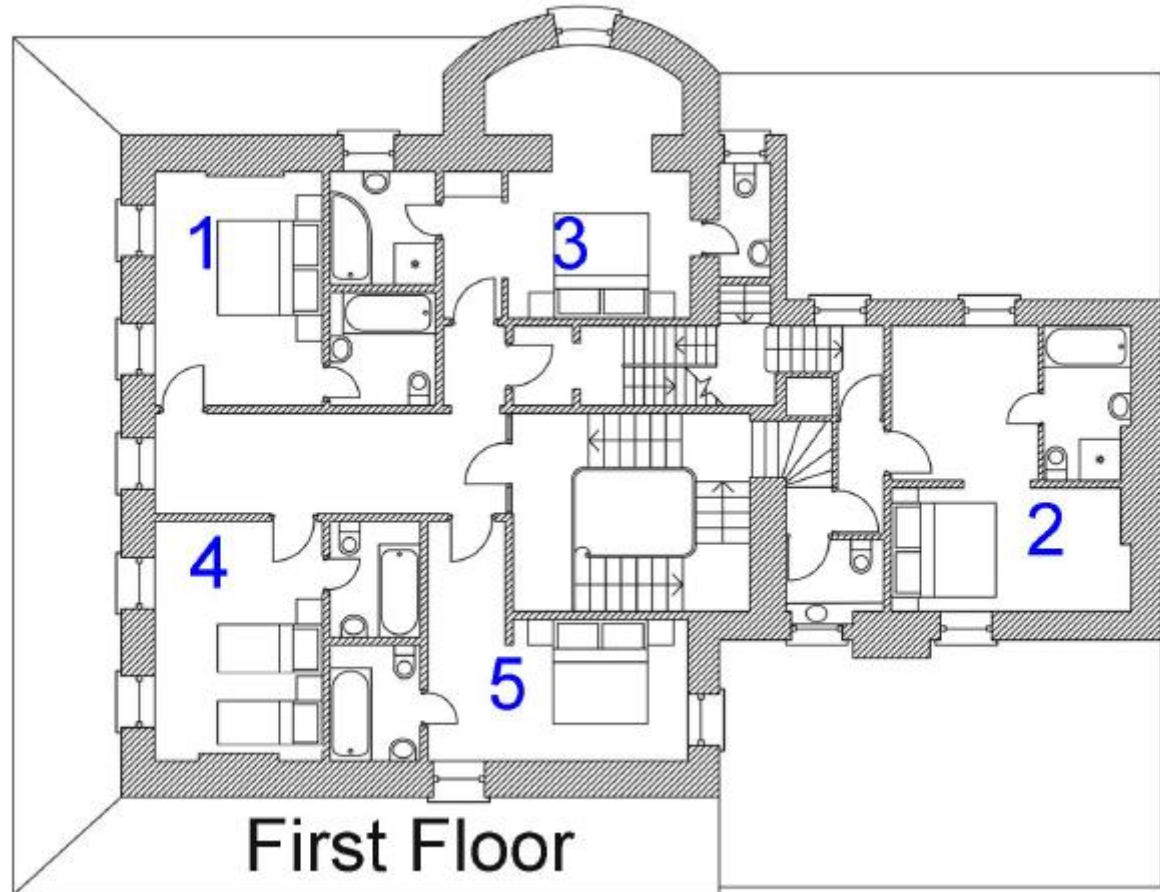


GROUND FLOOR PLAN



Annexe first floor shown
(bedrooms 10 & 11)

FIRST FLOOR PLAN



SECOND FLOOR PLAN

