



LIST OF ROOMS & FLOOR PLANS AT KESWICK COUNTRY MANOR

[Keswick Country Manor](#) is a luxurious house, surrounded by five acres of its own land with the most wonderful views in every direction, sleeping up to 20 guests in 10 bedrooms and 9 bathrooms.

Here's a list of all available rooms:

- **Two spacious reception rooms:** the Sitting Room and the large Family Room are places to come together with family and friends.
- **Snug:** complete with Freesat TV. The perfect place to escape.
- **Children's playroom**
- **Two modern kitchens:** one main kitchen and then one ideal for preparation (enjoyed by professional caterers). There's a Rangemaster cooker, 2 dishwashers, 2 American style fridge/freezers, a Nespresso coffee machine and a range of Bosch appliances.
- **Orangery (for dining):** a light and airy orangery, the perfect place to enjoy breakfast, with the views cascading in through the glass.
- **Dining room:** seating 20 guests.

BEDROOMS – sleeps 20 (+2) in 10 bedrooms

Bedroom	Beds	Sleeps	Features
Bedroom 7 (Ground floor)	King double	2	En suite wet room
Bedroom 1 (First floor)	King double	2	Shared bathroom
Bedroom 2 (First floor)	King double	2	Shared bathroom
Bedroom 3 (First floor)	King double	2	En suite
Bedroom 4 (First floor)	King double	2	En suite
Bedroom 5 (First floor)	King double	2	En suite
Bedroom 6 (First floor)	King double	2	En suite



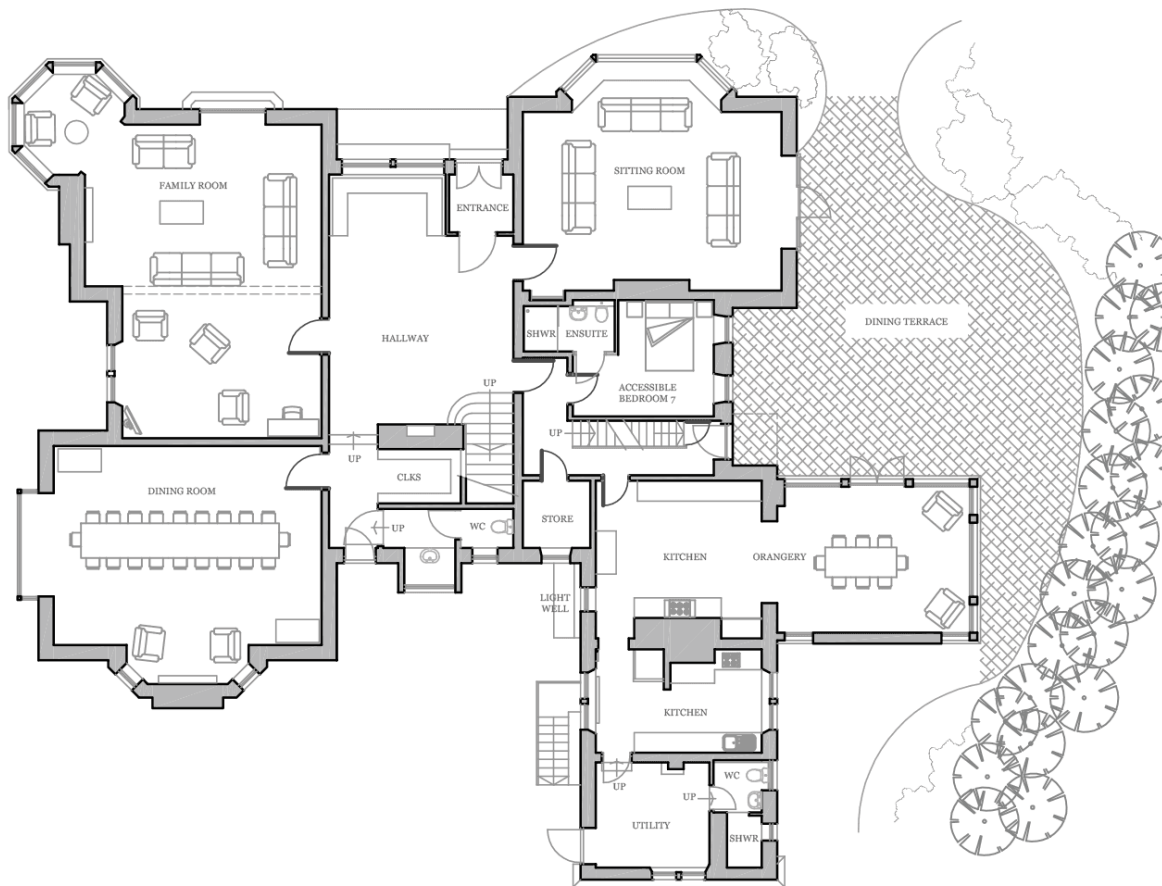
Bedroom	Beds	Sleeps	Features
Bedroom 8 (Second floor)	Twin	2	En suite
Bedroom 9 (Second floor)	Twin	2	En suite
Bedroom 10 (Second floor)	King double	2	En suite
Total		20 (+2)	

Please note two roll-out beds are available to accommodate 22 guests.

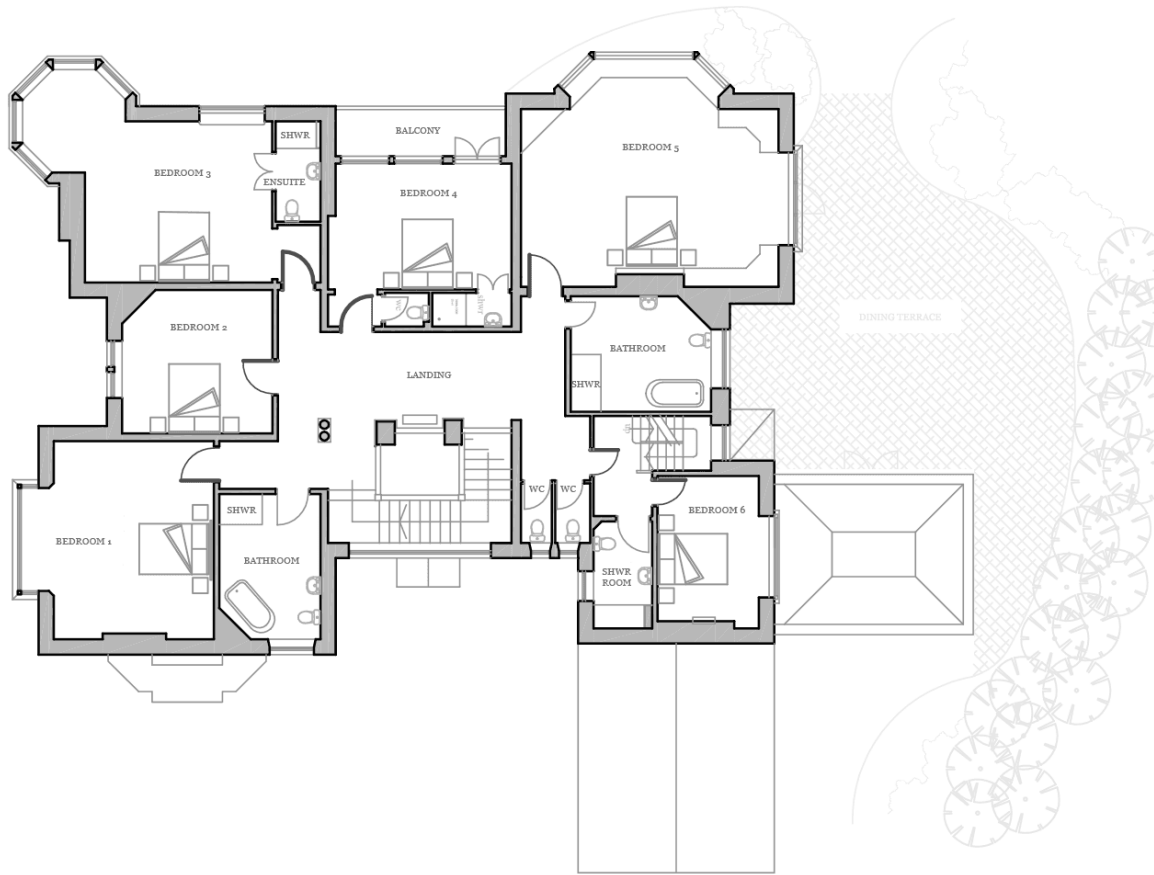
Overall Capacity:

- If each guest wants a private bedroom, the total capacity is 10
- If each guest would like their own bed, the total capacity is 12

GROUND FLOOR PLAN



FIRST FLOOR PLAN



SECOND FLOOR PLAN

