



## LIST OF ROOMS AT BARFORD BEACH HOUSE

With 6 double en suite bedrooms, and beds for 12 (+4) people, most with incredible sea views and wide balconies, this house will delight and amaze. With secret doorways, magical features and quirky design touches throughout, this house is perfect for a family gathering or party weekend with a group of friends.

### LIVING & ENTERTAINMENT SPACES

- **Sitting Room:** With a huge copper-clad central wall and hand-made metal shelving surrounding the wood-burner, this room is an impressive, practical and stylish space for you to enjoy. With huge sliding glass doors both ends, you can see right through the house to the beautiful seascape beyond.
- **Cinema Room:** Tucked beside the spa is a cosy cinema room with drop-down screen and 4HD projector, Netflix and a selection of DVDs for you to watch during your stay. Crack out the popcorn, it's time to get cosy!
- **Bunker Bar:** This is beyond cool: can you find the secret entrance and go through the rabbit hole? Predominantly for adults (and children under supervision), when all the fun of the day is done the party can continue in our underground nightclub! With a pool table and an arcade games machine (with over 700 retro games), everyone will be entertained.
- **Hot Tub and Sauna:** Whether you are a little chilled from a morning on the beach or just fancy indulging yourself, be sure to make time to spark up the hot tub and sauna during your stay. Rain or shine, it's a truly wonderful experience to sit looking at the sea from the comfort of a wood-fired hot tub with a glass of something in your hand. And when you get too hot, it's a short walk to the spa which has not only a cooling shower but also our cold bucket drop (if you're brave enough), which will cool you down superfast. If dry heat is more your thing, make sure you try out our fabulous 6-person sauna-with-a-view. Spa towels supplied.

### KITCHEN AND DINING

- **Kitchen and Dining Room:** The incredible copper-clad kitchen is kitted out with all the equipment you might need to cook up a feast. What you can expect:
  - Dual control 3 oven Aga plus additional fan oven and ceramic hob
  - Microwave
  - Fischer Paykel fridge freezer with chilled water dispenser and icemaker
  - Two dishwashers
  - Persian oak dining table seating 12-14
  - Floor to ceiling sliding glass doors onto the seaside garden
  - Separate utility room with washing machine and tumble dryer - underfloor heating throughout



## BEDROOMS – sleeps 12 (+4) in 6 bedrooms

● indicates a choice of bed configuration

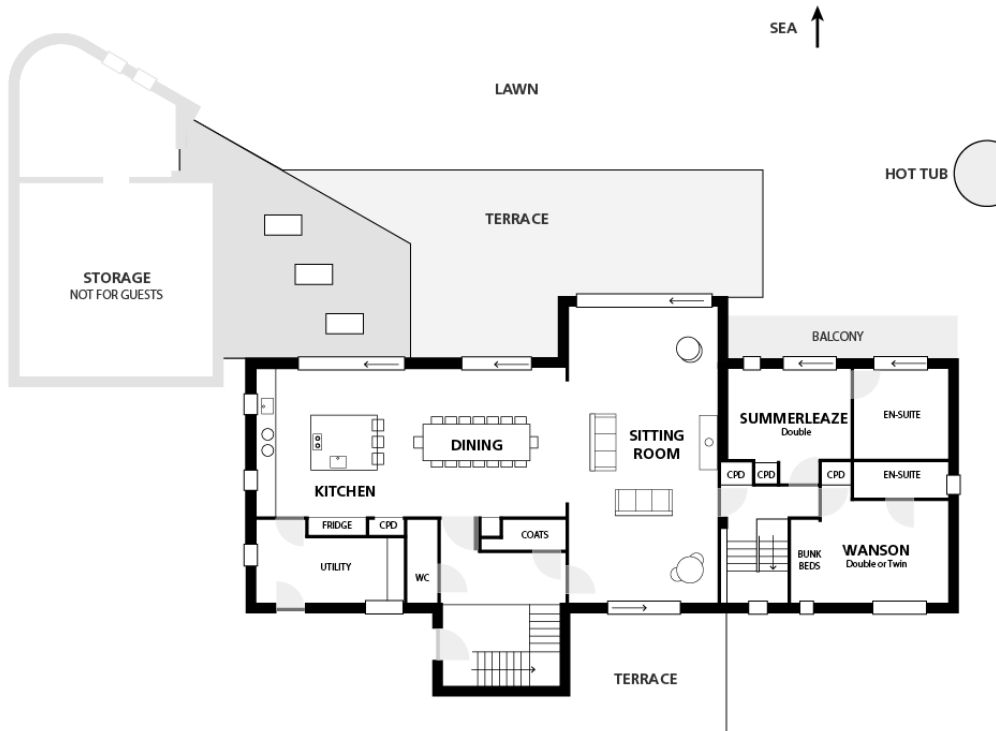
| Bedroom                    | Beds  | Sleeps         | Features  |
|----------------------------|---|----------------|---|
| Widemouth (Master Suite)   | Super king size bed   | 2              | Enormous bedroom with panoramic sea views of the magnificent Cornish coast, plus secret back balcony, galley kitchenette/cocktail bar with mini fridge. Impressive white marble en suite bathroom with stunning double walk-in shower and William Holland bath (with its own porthole view of the sea). Separate loo and bidet. |
| Black Rock                 | Super king size bed, can be divided into two single beds ● plus additional bunk suitable for an older child (a confident climber! – additional charge – see below). | 2 (+2)         | Balcony plus en suite shower room.  |
| Millock                    | Bespoke scaffold four-poster super king size bed  | 2              | En suite shower room. Full-height sliding doors onto the balcony and out to amazing sea views.  |
| Crackington                | Super king size bed, can be divided into two single beds ●  | 2              | Alice in Wonderland en suite bathroom with magical mirrored light shaft, hexagonal tiles, shower over the bath. Balcony with incredible sea views.  |
| Summerleaze (Ground Floor) | Super king size bed   | 2              | Balcony with incredible sea views. Marbled en suite bathroom with William Holland slipper bath and separate shower.   |
| Wanson                     | Super king size bed, can be divided into two single beds ● plus additional built-in wooden full size single two-tier bunk beds (additional charge – see below)      | 2 (+2)         | En suite shower room with St James shower.  |
| <b>Total</b>               |   | <b>12 (+4)</b> |   |

**Extra beds:** available at £150pp for short breaks (up to 6 nights) and £245pp (7+ nights).

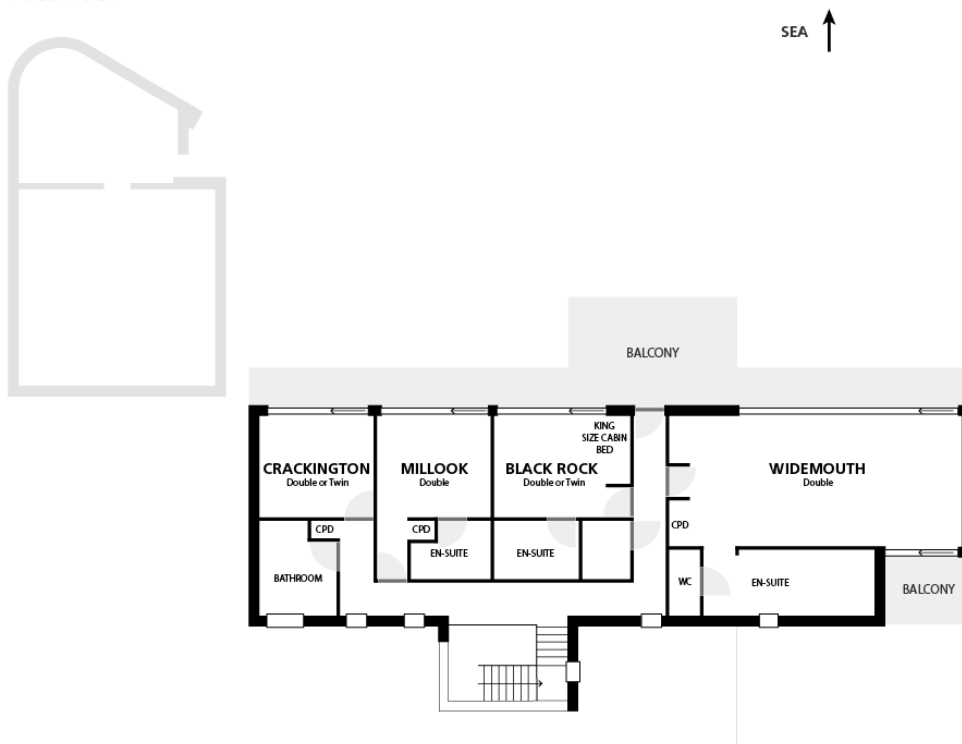


# FLOOR PLANS

Ground Floor



First Floor



# Lower Ground Floor

