



BEDROOMS AND FLOOR PLANS AT HIGH PEAK MANOR

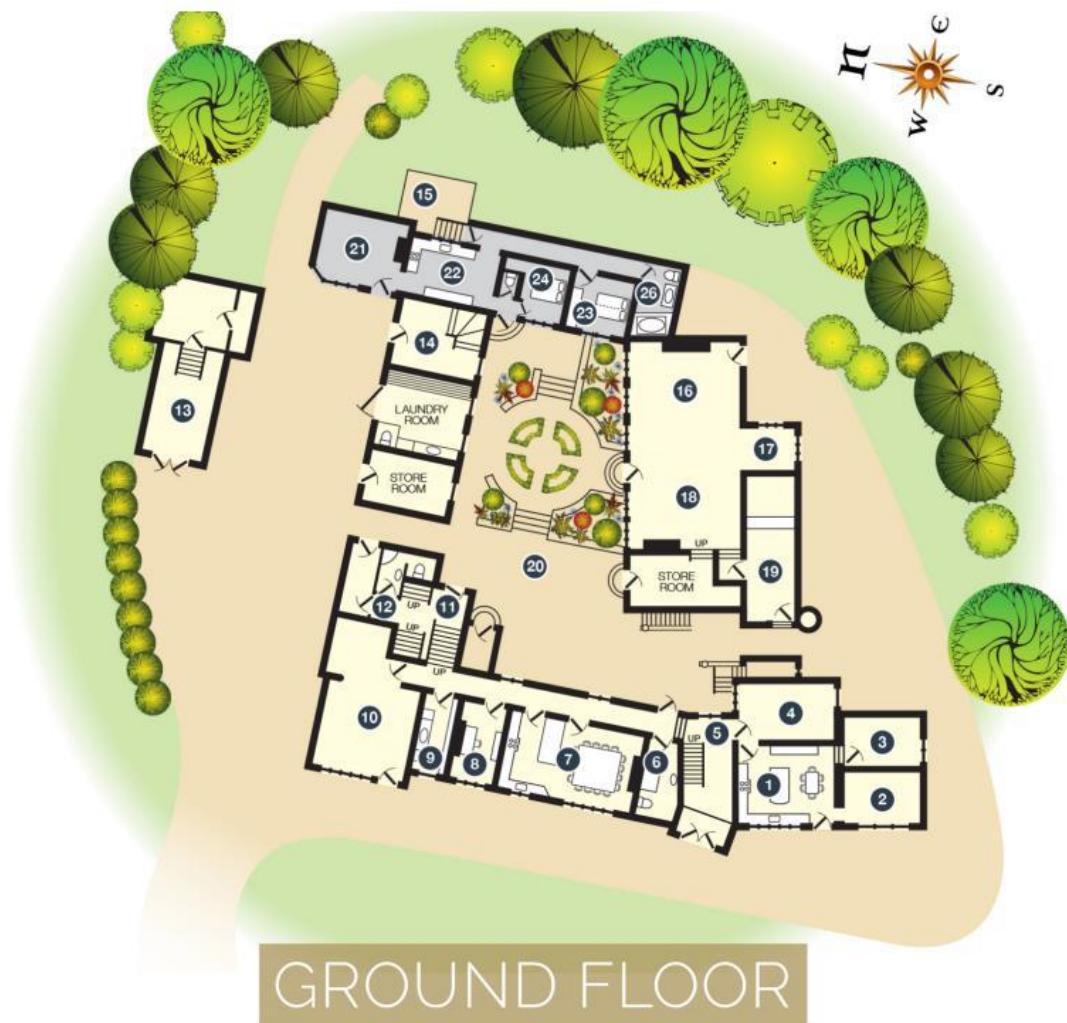
The bedrooms at High Peak Manor are as luxurious as they are cosy and welcoming.

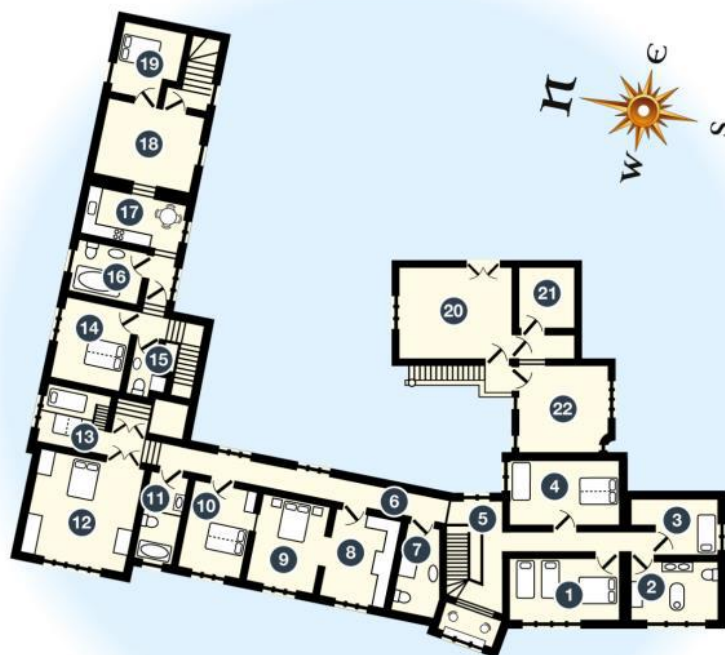
BEDROOMS – sleeps 26 in 11 bedrooms

Bedroom	Beds	Sleeps	Features
Rosalind's Room (no. 1 on first floor plan)	1 x double & 2 x singles	4	A large double bedroom on the first floor ideal for a family or sharers. Views over the gardens and Kinder Reservoir.
Sunrise Room (no. 3 on first floor plan)	1 x double	2	A double room on the first floor.
Agatha's Room (no. 4 on first floor plan)	1 x king size (can be 2 singles) & 1 x single day bed	2-3	Where Agatha Christie would sleep and dream up new mysteries for Miss Marple to investigate, the character she created in the Peak District. Overlooks the courtyard.
James' Room (no. 8 & 9 on first floor plan)	1 x super king	2	With a huge antique double bed, a love seat and wonderful view of Kinder Water.
Watts' Chamber (no. 10 on first floor plan)	1 x king size (can be 2 singles)	2	With an adjoining door to James' room, ideal if a family are staying. Lovely views.
The Reservoir Room (no. 12 on first floor plan)	1 x super king	2	With a four-poster bed, vaulted ceilings and the most perfect view of Kinder Water.
Poirot's Perch (no. 13 on first floor plan)	1 x king size (can be 2 singles) 1 x single	2-3	With a mezzanine floor and a cosy feel. Single bed ideal for a child.
William's Clough (no. 14 on first floor plan)	1 x king size (can be 2 singles)	2	Views of Kinder.
Clock Tower Room (no. 22 on first floor plan)	1 x king size (can be 2 singles)	2	Stand-alone apartment with kitchenette and stunning ensuite bathroom, overlooking the courtyard.
Tracker's Rest (no. 23 on ground floor plan)	1 x king size (can be 2 singles)	2	Warm and cosy in the Gamekeeper's Cottage.



Bedroom	Beds	Sleeps	Features
Cook's Room (no. 24 on ground floor plan)	1 x double	2	In the Gamekeeper's Cottage.
Total		24/26	





FIRST FLOOR

GROUND FLOOR

1. Breakfast Kitchen
2. Snug
3. Larder
4. Gun Room
5. Entrance Hall
6. Bathroom
7. Dining Room & Service Kitchen
8. Study
9. Utility
10. Lounge
11. Hall
12. Shower Room
13. Elm Studio
14. Butler's Boot Room & Entrance Hall
15. Patio
16. Medieval Banqueting Hall
17. Medieval Banqueting Hall Bay Window
18. Medieval Banqueting Hall
19. Pub
20. Courtyard
21. Cottage Lounge
22. Cottage Kitchen
23. Cottage Bedroom
24. Cottage Bathroom

FIRST FLOOR

1. Rosalind's Room
2. Family Bathroom
3. Sunrise Bedroom
4. Agatha's Room
5. Tower Room
6. Corridor
7. Shower Room
8. The James Room Dressing Room
9. The James Room
10. Watt's Chamber
11. Family Bathroom
12. The Reservoir Room
13. Poirot's Perch
14. William's Clough
15. Shower Room
16. Family Bathroom
17. Butler's Kitchen
18. Butler's Lounge
19. Peter's Nook
20. The Garrett Room
21. The Clock Tower Bathroom
22. The Clock Tower



BIG HOUSE EXPERIENCE