



## LIST OF BEDROOMS & FLOOR PLANS AT THE RETREAT BARN

### BEDROOMS – sleeps 12 in 6 bedrooms

● indicates a choice of bed configuration

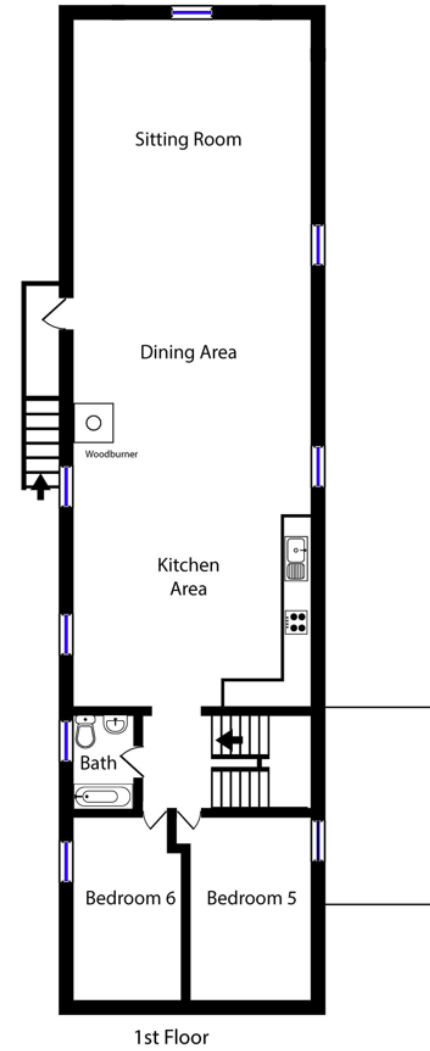
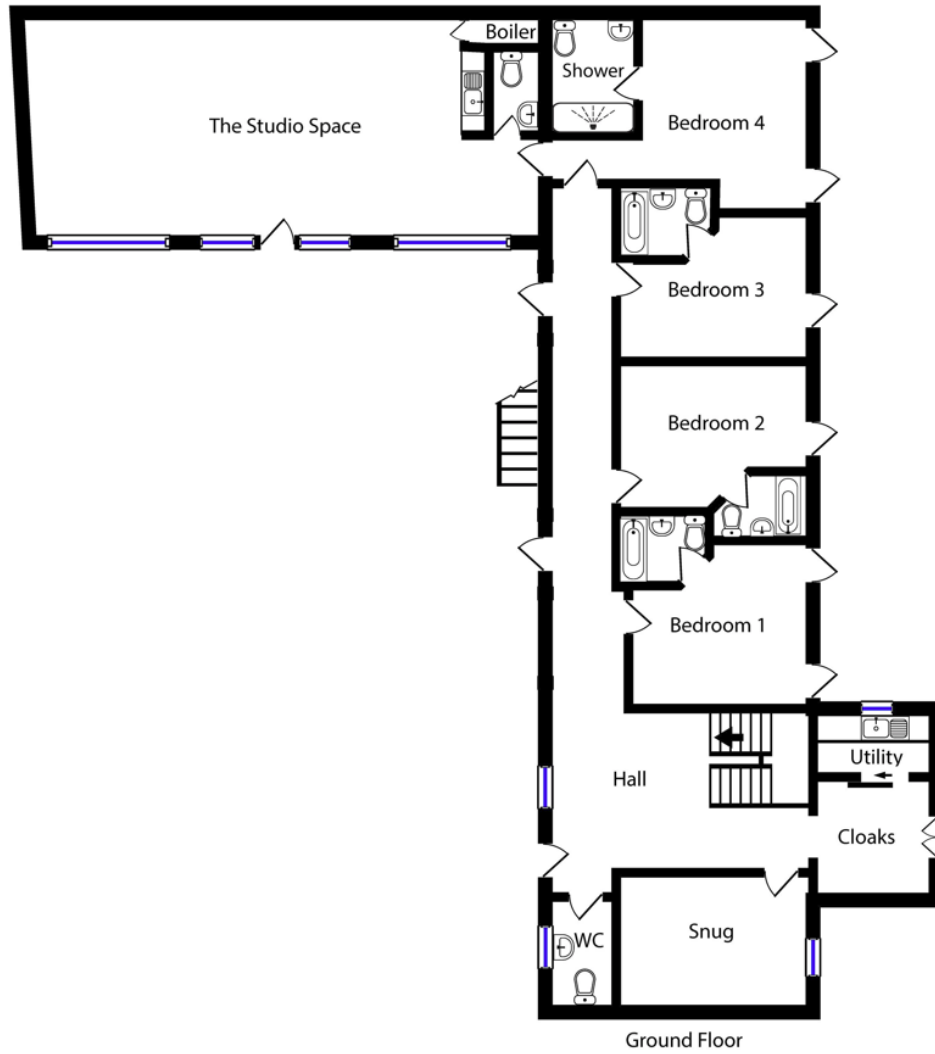
Bedroom	Beds	Sleeps	Features
Bedroom 1 Chestnut (ground floor)	Super king size bed (can be divided into two single beds) ●	2	Ensuite bathroom with bath with overhead shower. One of the three biggest rooms. Two door access to the terrace.
Bedroom 2 Cherry (ground floor)	Super king size bed (can be divided into two single beds) ●	2	Ensuite bathroom with bath with overhead shower. One of the three biggest rooms. One door access to the terrace.
Bedroom 3 Oak (ground floor)	Super king size bed (can be divided into two single beds) ●	2	Ensuite bathroom with bath with overhead shower. One door access to the terrace.
Bedroom 4 Elderberry (ground floor)	Super king size bed (can be divided into two single beds) ●	2	Ensuite shower room. One of the three biggest rooms. Two door access to the terrace.
Bedroom 5 Willow (first floor)	Super king size bed (can be divided into two single beds) ●	2	Smaller than ground floor rooms. Shared bathroom with bath with overhead shower (shared with bedroom 6).
Bedroom 6 Juniper (first floor)	Super king size bed (can be divided into two single beds) ●	2	Smaller than ground floor rooms. Shared bathroom with bath with overhead shower (shared with bedroom 5).
<b>Total</b>		<b>12</b>	

Bedrooms 1, 2 & 4 have space for a travel cot.



## FLOOR PLANS

---



BIG HOUSE EXPERIENCE