



BEDROOMS AND LAYOUT OF HOUSE ON THE MOAT, SUFFOLK

House on the Moat sleeps 12 guests comfortably. Pick one of six characterful bedrooms, including one perched over the water in its own boat house complete with in-room roll-top bath and a hot tub on the decking overlooking the moat.

Here's a list of all available bedrooms

HOUSE ON THE MOAT – sleeps 12 in 6 bedrooms.

- indicates a choice of bed configuration

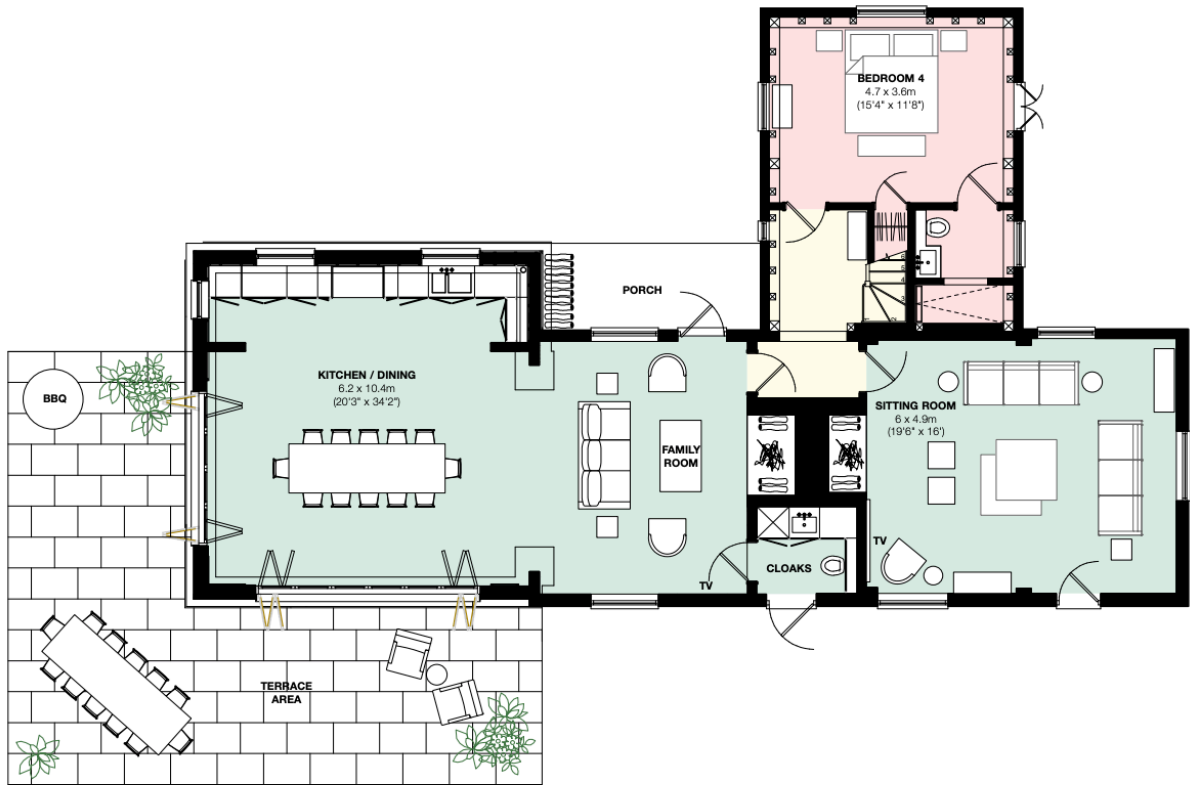
Bedroom	Beds	Sleeps	Features
Bedroom 1 (First Floor)	King-sized bed	2	En-suite with walk-in shower
Bedroom 2 (First Floor)	Super king bed	2	The Master bedroom. Free-standing zinc roll-top bath plus an en-suite bathroom accessed by stairs in the bedroom which has a sink and W.C.
Bedroom 3 (First Floor)	King-sized bed, , can be divided into two single beds •	2	En-suite with bathtub
Bedroom 4 (Ground Floor)	King-sized bed, , can be divided into two single beds •	2	En-suite with walk-in shower
Bedroom 5 (Second Floor)	King-sized bed	2	En-suite bathroom with bathtub
Bedroom 6 (Boat House on Ground Floor)	King-sized bed	2	En-suite. A wonderful private bedroom in the boathouse over the moat with free-standing roll-top bath with handheld shower and a hot-tub on the deck.
Total		12	

Overall capacity:

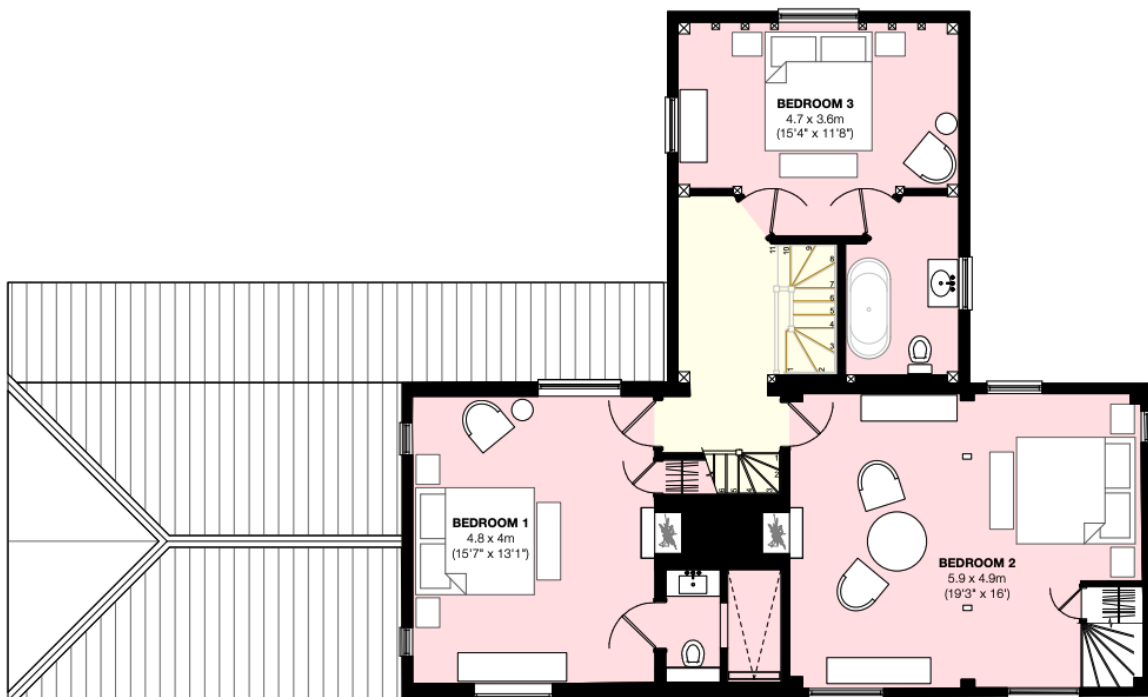
- If each guest wants a private bedroom, the total capacity is 6.
- If each guest would like their own bed, the total capacity 8.



FLOOR PLANS

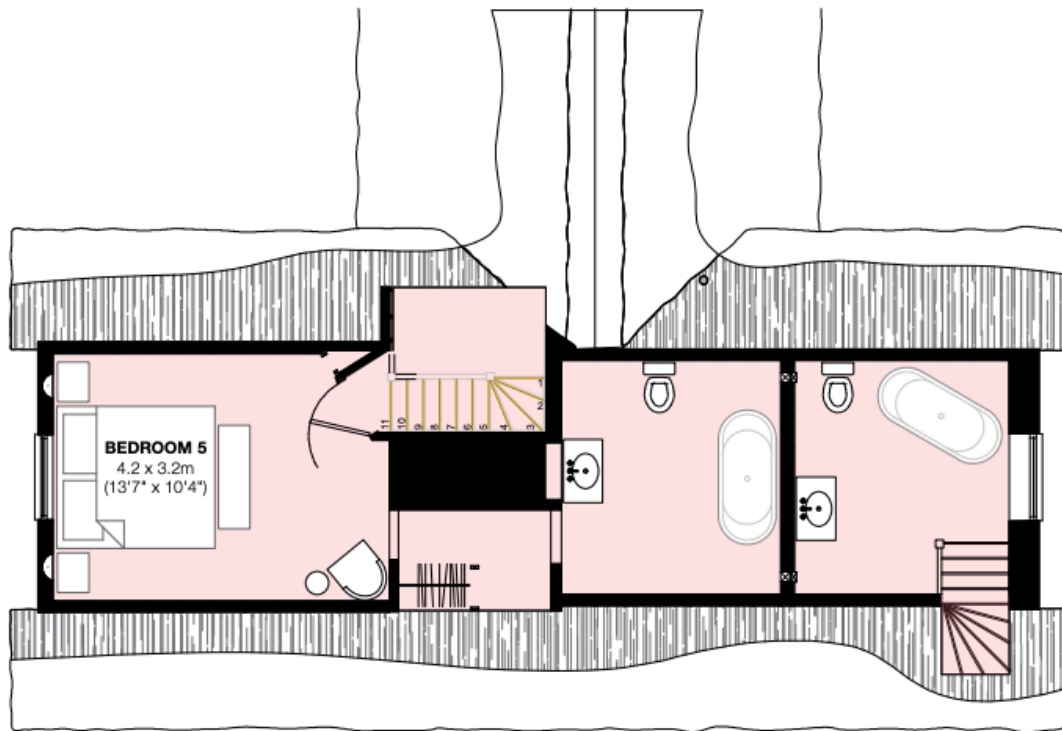


GROUND FLOOR



FIRST FLOOR





SECOND FLOOR

