



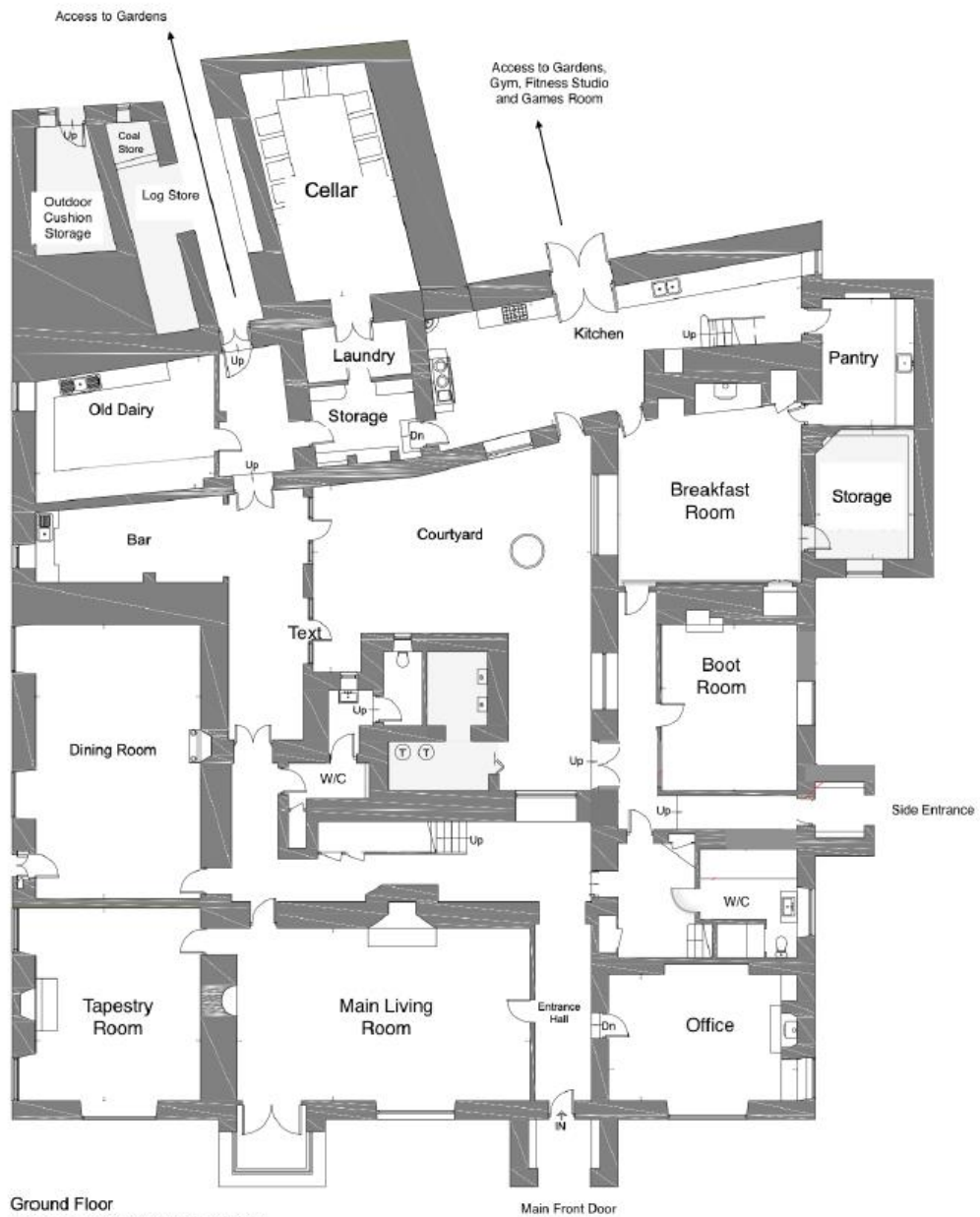
LIST OF BEDROOMS & FLOOR PLANS AT HARBIN HOUSE

BEDROOMS – sleeps 19 (+1) in 9 bedrooms

Bedroom	Beds	Sleeps	Features
The Harbin Suite (First floor)	Four poster super king size bed	2	Spacious suite (36 sqm) with two dressing rooms and seating area. Picturesque parkland views. Ensuite bathroom with roll top bath, large free-standing shower and double sink.
The Wyndham Suite (First floor)	Super king size bed	2	Dual aspect suite (24.5 sqm). Views over the estate. Generous seating area. Ensuite bathroom with roll top bath and free-standing shower.
The Phelips Suite (First floor)	Four poster king size bed	2	Suite (23 sqm) with dual aspect windows offering views of the courtyard and woodland. Ensuite bathroom with roll top bath, free-standing shower and ample dressing space.
The Rawlins Suite (First floor)	Four poster bed	2	Suite (25.5 sqm). Seating area. Ensuite bathroom with bathtub. Sole use of separate shower room close by.
The Bates Room (Second floor)	Super king size bed, plus single day bed	2 (+1)	Generous sized room (27.5 sqm). Access to a shared bathroom down the corridor with spacious shower and double sinks.
The Compton Room (Second floor)	King size bed, plus two single beds	4	Family room (34 sqm). Interconnects with The Burnell Room. Views to the front and rear gardens. Separate bathroom with shower.
The Burnell Room (Second floor)	Single bed	1	Cosy room (15 sqm) with TV. Shared bathroom with The Compton Room.
The Holme Room (Second floor)	Two single beds	2	19.5 sqm. Views of the front parkland. Shared bathroom down the corridor with shower (shared with Musket Room).
The Musket Room (Second floor)	King size bed	2	24 sqm. Views of the estate. Shared bathroom down the corridor with shower (shared with Holme Room).
Total		19 (+1)	



FLOOR PLANS – ground floor



FLOOR PLANS – first floor



FLOOR PLANS – second floor

