



LIST OF ROOMS AT TREGULLAND COTTAGE AND BARN

[Tregulland Cottage and Barn](#) is the perfect place for large group holidays and celebrations for 22 (+3) guests. Whether you come for a week's perfect holiday or just a winter weekend, it has been designed to suit everyone. Cook up a feast in the state-of-the-art kitchens, go for a walk around the grounds, have a spa session in the pool house or curl up with a book and watch the weather roll through the valley; you'll never want to leave.

The Cottage has 6 double bedrooms (4 of which can be split into two single beds) sleeping 12 (+3), and The Barn has 5 doubles (3 of which can be split into two single beds) sleeping 10. All bedrooms are en suite, each house has its own sitting room, fully equipped kitchen, dining room and utility room. With separate Pool House, Children's Playground, Old Workshop and Tregulland's 16-acre private grounds incorporating a fully stocked fishing lake and woodland.

THE COTTAGE

- **Cottage Kitchen:** The Cottage Kitchen is the beating heart of Tregulland. With gorgeous views over the valley through the 3-metre long window, the Cottage Kitchen has a tranquil country feel perfect for a spot of baking, or if you are so inclined to rustle up a 3-course meal (alternatively we can call in a chef to do it for you).
- **The Snug:** With a Scottish hunting lodge feel and a huge, soft sinking sofa, the Snug certainly lives up to its name. Pull up a blanket, brew a cup of tea, fetch a slice of cake and you're all ready for the perfect afternoon.
- **Dining Room:** With a huge 5.5 metre dining table - seats up to 24 diners - bespoke upcycled tubular chairs by Claire Danthois, a wood-burning stove and commissioned lampshade artwork of Tregulland by Laura Oakes. This is the perfect place to gather and perfect for a celebration.
- **The Sun Room:** With walls of glass, The Sun Room looks out onto the valley and offers the perfect spot for some relaxation or a doze with plenty of seating.

COTTAGE BEDROOMS – sleeps 12 (+3) in 6 bedrooms

● indicates a choice of bed configuration

Bedroom	Beds	Sleeps	Features
Meadowsweet (Ground floor)	Super king size bed, can be divided into two single beds ● (space for extra bed – additional charge)	2 (+1)	Hansgrohe rainfall shower room. Super-quiet spot.



Angelica (Ground floor)	Super king size bed, can be divided into two single beds ●	2	En-suite bathroom with double shower with Hansgrohe rainfall heads. French doors onto terrace with view of the lake and valley.
Celandine	Super king size bed	2	En-suite bathroom with double-ended roll-top bath and large separate shower with Hansgrohe rainfall head. Juliet balcony with the best views in the property of Bodmin Moor and lake.
Valerian	Super king size bed, can be divided into two single beds ● (space for up to 2 extra beds – additional charge)	2 (+1 or 2)	En-suite bathroom with roll-top slipper bath and separate shower with Hansgrohe rainfall showerhead.
Saxifrage	King size bed	2	En-suite bathroom with Hansgrohe rainfall shower.
Wood Aven	Super king size bed, can be divided into two single beds ● (space for up to 2 extra beds – additional charge)	2 (+1 or 2)	En-suite bathroom with Hansgrohe rainfall shower.
Total		12 (+3)	

Extra beds are either z beds or futon style rollaway beds. Additional charge for extra beds: £110 per bed for 3 or 4-night stays and £175 for 7-night stays.

THE BARN

- **Kitchen/Diner:** Open-plan design and breakfast bar make this the ideal venue for informal dining. Its centrepiece is a large table made from spare floorboards taken from the Granary Sitting Room - the legs are made from an obsolete telegraph pole that once stood in the garden.
- **The Granary Sitting Room:** Where everyone can come together for a game of poker, some R&R in front of the fire, or make your choice from Tregulland's substantial collection of books. Chill out and find your perfect spot from the varied seating (from rocking chairs to giant 5-foot beanbags), and when you are in movie mood, lower the High Definition projection screen and get a DVD on from the collection.
- **The Map Room:** A cosy nook, or a walker's den, the Map Room is a really nice place to get away from the gang and do some quiet planning for a walk or trip out.



BARN BEDROOMS – sleeps 10 in 5 bedrooms

● indicates a choice of bed configuration

Bedroom	Beds	Sleeps	Features
Goldfinch (Ground floor)	Super king size bed, can be divided into two single beds ●	2	En-suite bathroom with grab handles and accessible loo - Hansgrohe rainfall wet room shower. Door directly onto courtyard.
Kestrel (Ground floor)	King size bed	2	En-suite walk in wet room with Hansgrohe rainfall shower.
Peregrine	Super king size bed, can be divided into two single beds ●	2	The Master Bedroom with en-suite bathroom with double-ended roll top bath and separate Hansgrohe rainfall shower.
Kingfisher	Super king size bed, can be divided into two single beds ●	2	En-suite shower room with Hansgrohe rainfall shower.
Barn Owl	King size bed	2	En-suite bathroom with Hansgrohe rainfall shower. Ingenious Solatube lightwell in the bathroom provides daylight.
Total		10	

ALSO, WITHIN THE GROUNDS

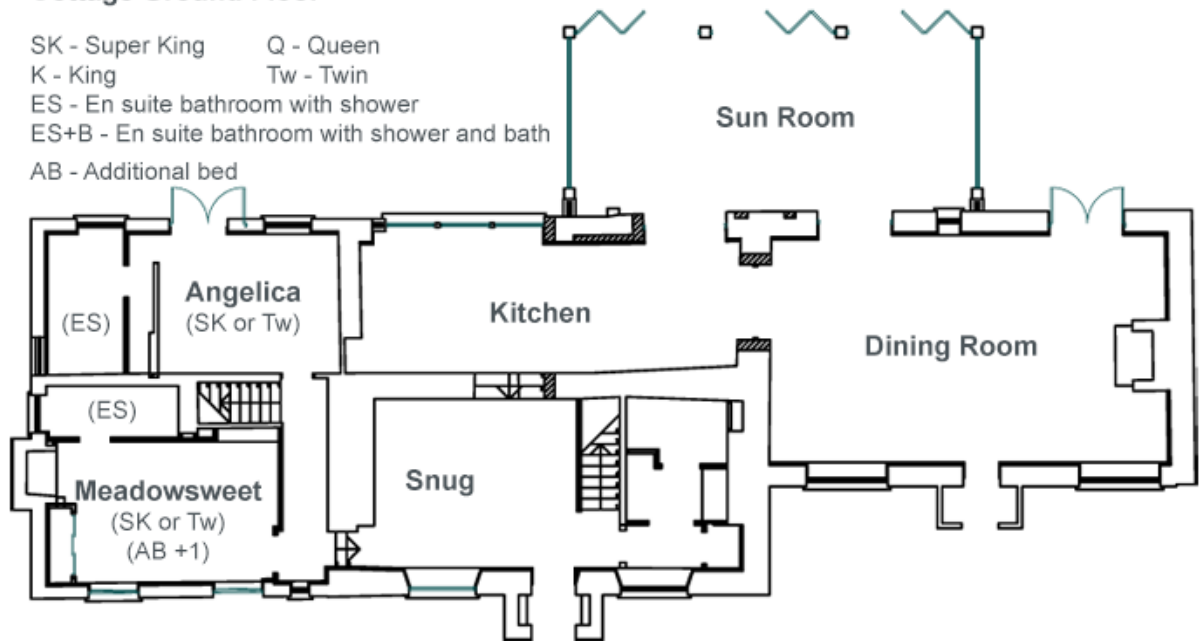
- **The Pool House:** Britain's first heated indoor freshwater pool and separate children's pool. The pool uses no chlorine or chemicals. Instead, the fresh Cornish spring water drawn straight from the ground is maintained at 28 degrees. There's also a 6-person steam room, outdoor wood fired Dutch Tub and changing rooms (swimming towels provided).
- **The Old Workshop:** This large (6x7m) light, airy room can be whatever you want it to be. With a removable ping pong table normally in place we can transform it into a (licenced for 40) flower-filled wedding venue, an all-white curtained spa room for a massage or yoga workshop or even rows of chairs for your launch, presentation or meeting.
- **Play Area:** Overlooking the valley, tucked in next to the barn, the outdoor play area consists of a giant slide, a whisper pipe, balance trunks, stepping stones, balance planks, a Cornish pirate boat, toddler castle and digger track bumps.
- **The Lake:** 16 acres of private grounds incorporating a fully stocked fishing lake and woodland. To apply for fishing rights please call to discuss (we have many mature carp etc in the lake which can be caught but not to be eaten!).



Floor Plans

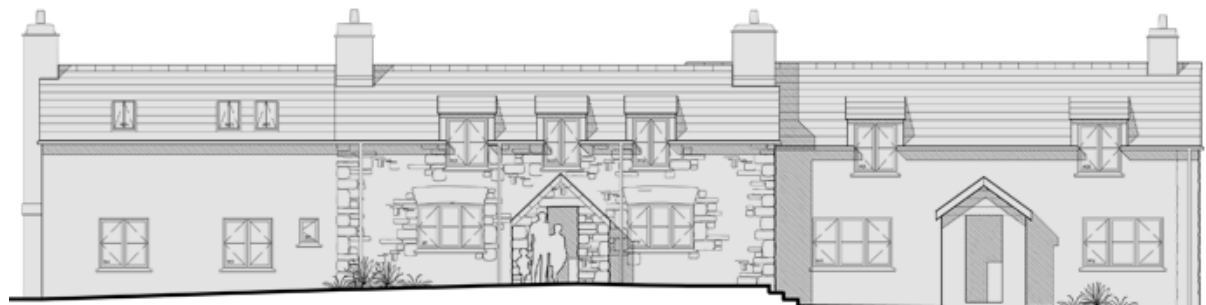
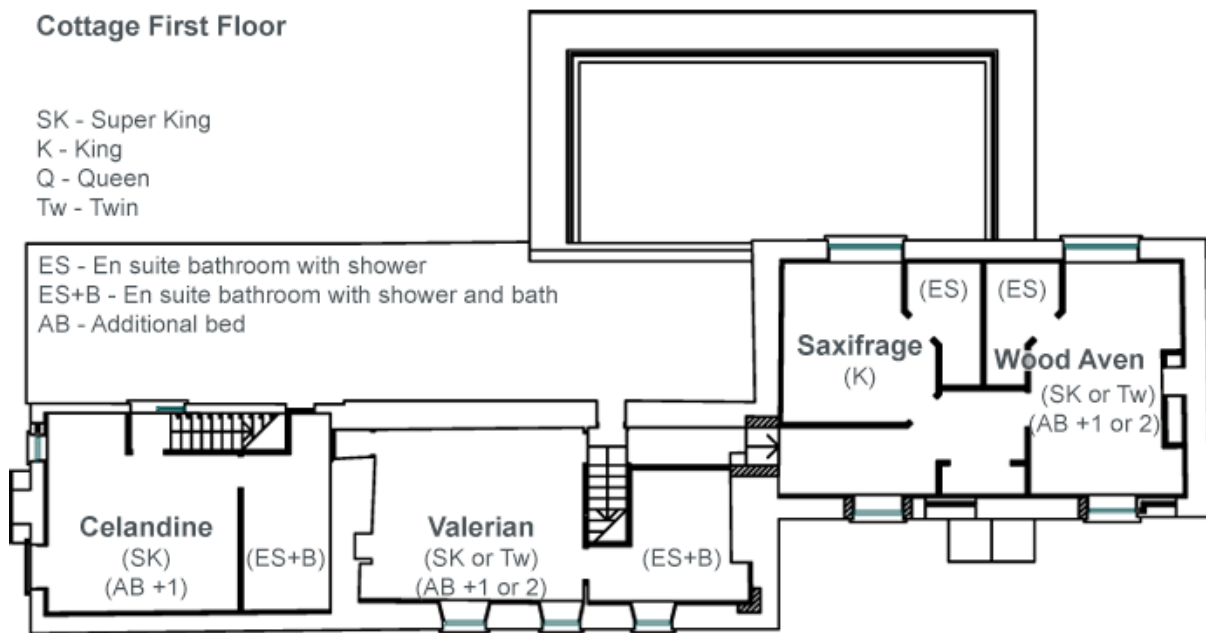
Cottage Ground Floor

- SK - Super King Q - Queen
- K - King Tw - Twin
- ES - En suite bathroom with shower
- ES+B - En suite bathroom with shower and bath
- AB - Additional bed



Cottage First Floor

- SK - Super King
- K - King
- Q - Queen
- Tw - Twin
- ES - En suite bathroom with shower
- ES+B - En suite bathroom with shower and bath
- AB - Additional bed



EAST ELEVATION



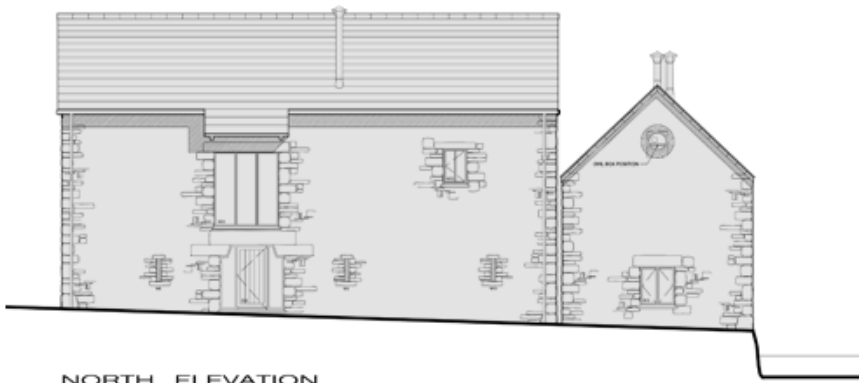
Barn Ground Floor



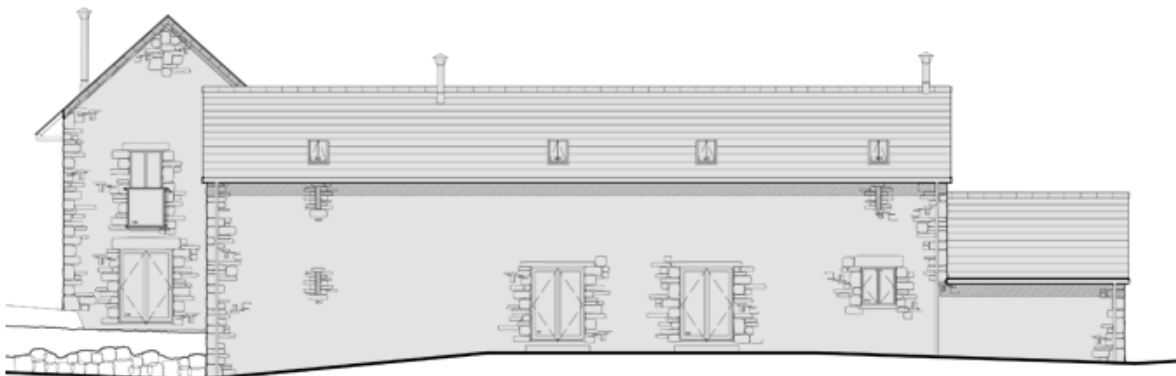
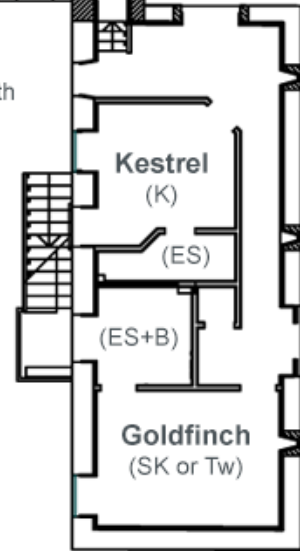
SK - Super King
K - King

Q - Queen
Tw - Twin

ES - En suite bathroom with shower
ES+B - En suite bathroom with shower and bath



NORTH ELEVATION

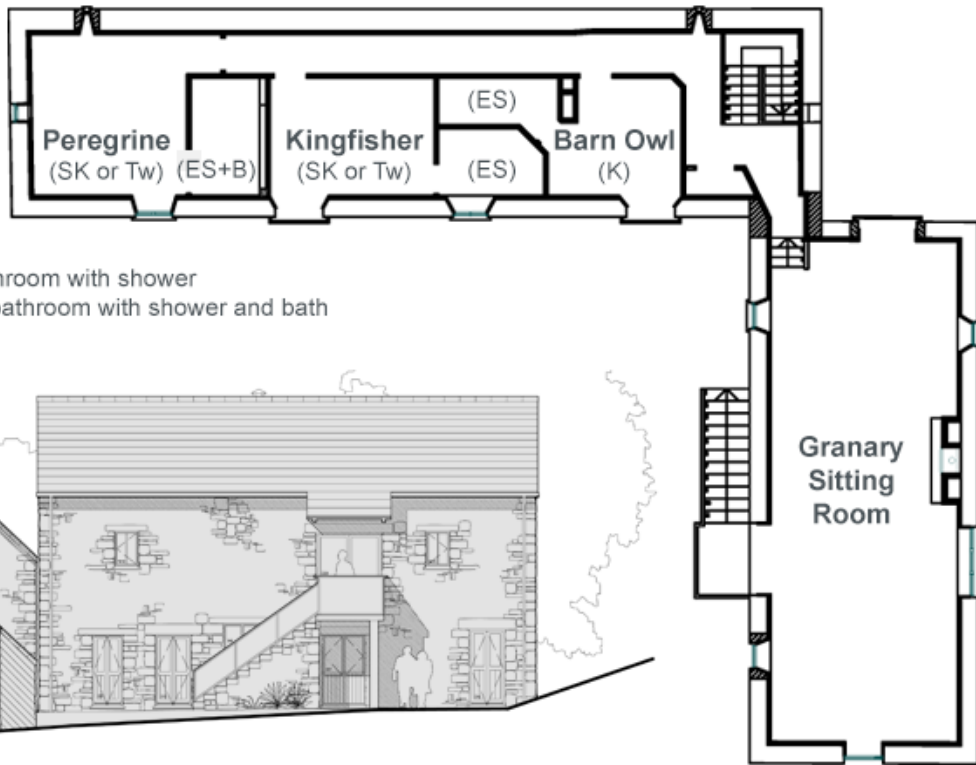


WEST ELEVATION



Barn 1st Floor

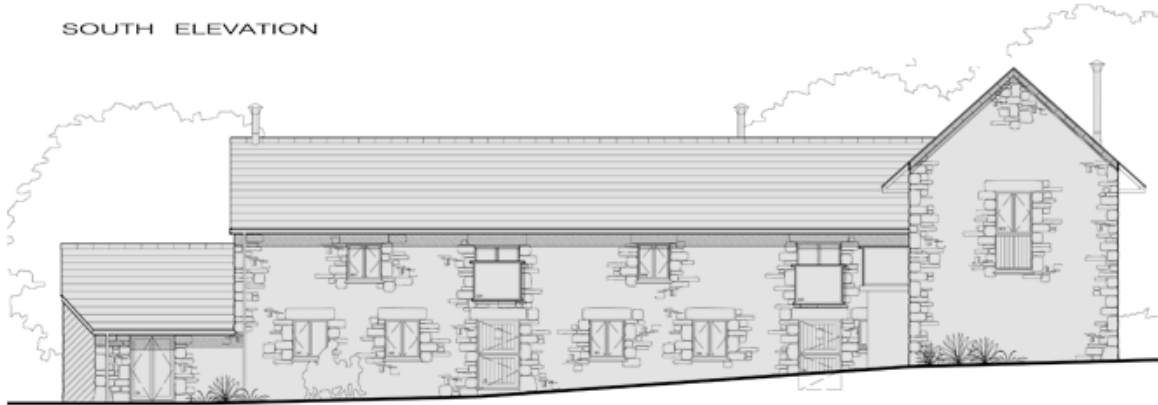
SK - Super King
K - King
Q - Queen
Tw - Twin



ES - En suite bathroom with shower
ES+B - En suite bathroom with shower and bath



SOUTH ELEVATION



EAST ELEVATION



BIG HOUSE EXPERIENCE