



LIST OF BEDROOMS & FLOOR PLANS AT EASTWOLD BARN

BEDROOMS – sleeps 16 (+3*) in 6 bedrooms

Bedroom	Beds	Sleeps	Features
Bedroom 1 (first floor)	Super king size bed	2	Ensuite bathroom with bath and separate shower. Sofa bed available (additional cost – see below). Wooden cot.
Bedroom 2 (first floor)	Two king size beds	4	Ensuite shower room. Space for a cot.
Bedroom 3 (ground floor)	Two king size beds	4	Ensuite shower room with grab rails and shower chair. Space for a cot.
Bedroom 4 (ground floor)	Super king size bed	2	Ensuite shower room. Space for a cot.
Bedroom 5 (ground floor)	King size bed	2	Ensuite shower room.
Bedroom 6 (ground floor)	King size bed	2	Ensuite shower room.
Total		16 (+3*)	

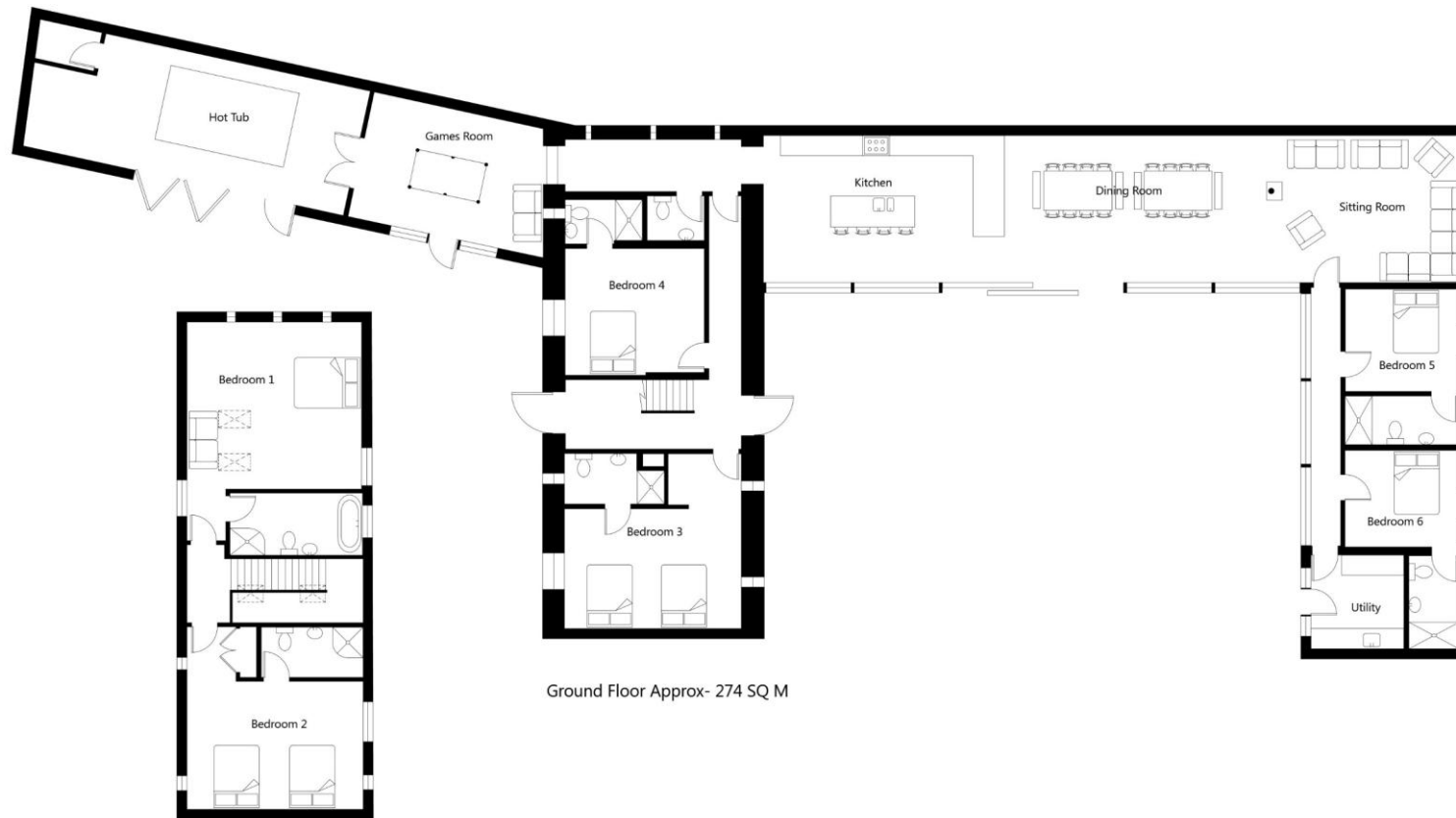
*There is one sofa bed (in bedroom 1) and two small camp beds available for an additional cost of £50 per person, per stay.

The maximum sleeping capacity allowed at Eastwold Barn is 19 guests.

Please note, none of the beds are zip and link so cannot be configured as twins.



FLOOR PLANS



Ground Floor Approx- 274 SQ M

First Floor Approx - 75 SQ M

NOT TO SCALE - FOR ILLUSTRATIVE PURPOSES ONLY
All Measurements and fixtures including doors and windows
are approximate and should be independently verified.
www.exposurepropertymarketing.com © 2024



BIG HOUSE EXPERIENCE