



## LIST OF BEDROOMS & FLOOR PLANS AT LONGSLADE HALL

### BEDROOMS – sleeps 18 (+6) in 8 bedrooms

● indicates a choice of bed configuration

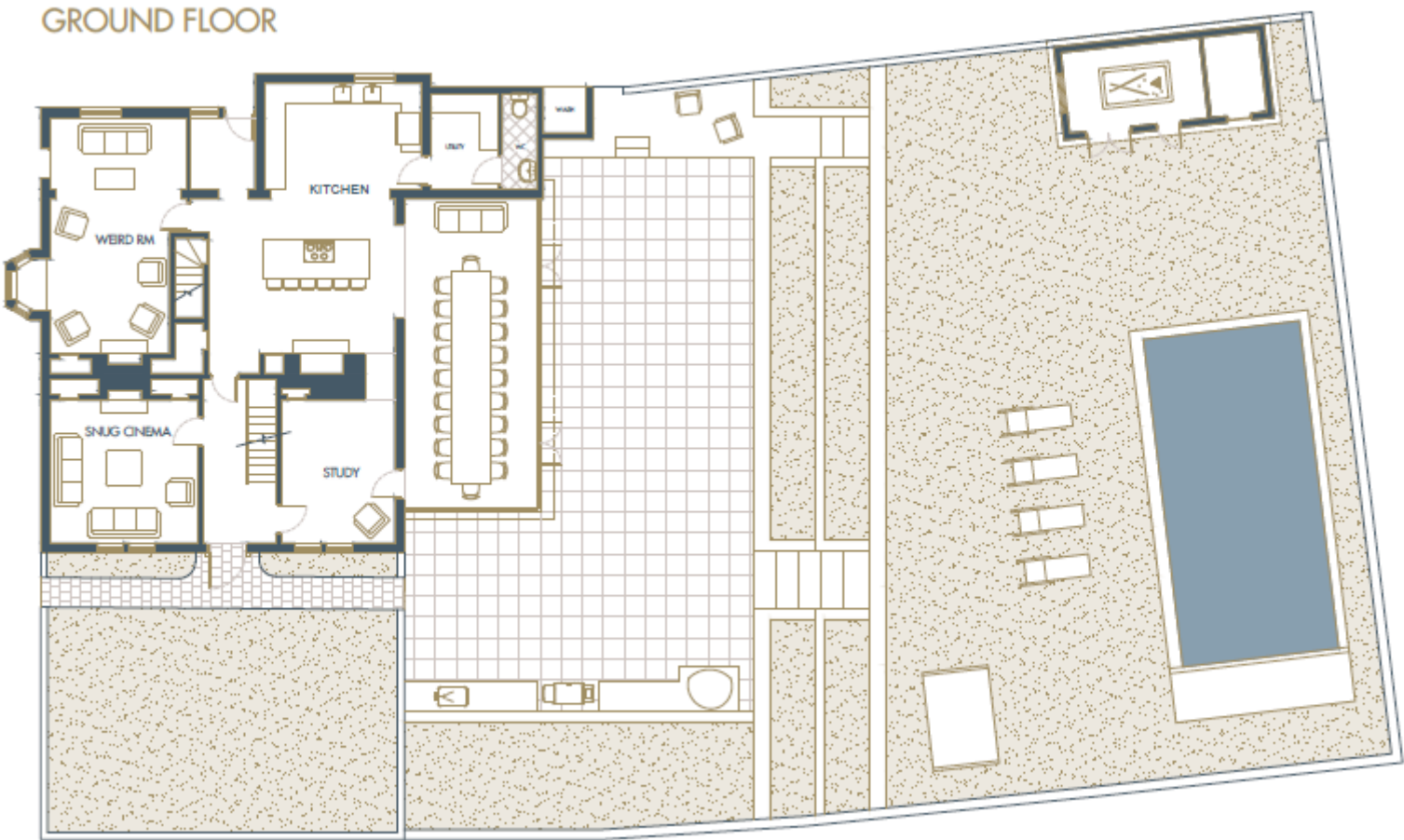
Bedroom	Beds	Sleeps	Features
Bedroom 1 (First floor)	King size bed (can be divided into two single beds) ● plus 1 extra bed (additional charge)	2 (+1)	En-suite shower room.
Bedroom 2 (First floor)	King size bed (can be divided into two single beds) ●	2	En-suite shower room.
Bedroom 3 (First floor)	Super king size bed (can be divided into two single beds) ● plus 2 extra beds (additional charge)	2 (+2)	En-suite shower room. Wall-mounted TV.
Bedroom 4 (First floor)	2 x bunk beds (suitable for adults)	4	En-suite shower room.
Bedroom 5 (Second floor)	King size bed (can be divided into two single beds) ● plus 1 extra bed (additional charge)	2 (+1)	En-suite shower room.
Bedroom 6 (Second floor)	Super king size bed (can be divided into two single beds) ●	2	En-suite shower room.
Bedroom 7 (Second floor)	Super king size bed (can be divided into two single beds) ● plus 1 extra bed (additional charge)	2 (+1)	En-suite shower room. Wall-mounted TV.
Bedroom 8 (Second floor)	King size bed (can be divided into two single beds) ● plus 1 extra bed (additional charge)	2 (+1)	En-suite shower room.
<b>Total</b>		<b>18 (+6)</b>	

There are 6 extra beds that can be set up in bedrooms 1, 3, 5, 7 & 8 for an additional charge of £100 per bed, per weekend or midweek stay and £200 per bed, per week-long stay.



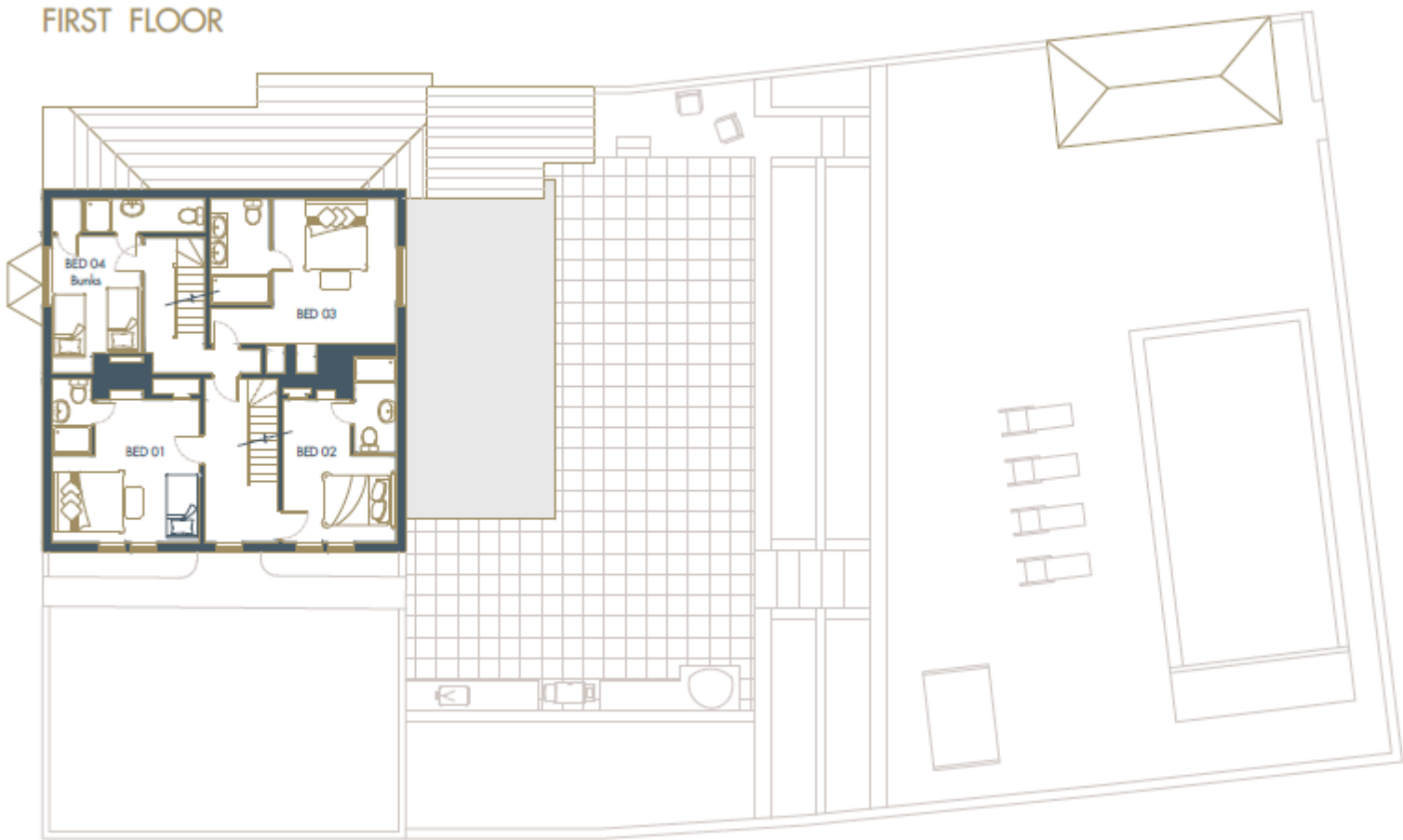
GROUND FLOOR PLAN

---



FIRST FLOOR PLAN

---



## SECOND FLOOR PLAN

---

### SECOND FLOOR



BIG HOUSE EXPERIENCE