



LIST OF BEDROOMS & FLOOR PLANS AT WHIN BUSH FARM

BEDROOMS – sleeps 28 in 13 bedrooms

Bedroom	Beds	Sleeps	Features
Woldfoot Farm			
Bedroom 1 (ground floor)	King size bed	2	Ensuite shower room with grab rails and shower chair. Space for a cot.
Bedroom 2 (first floor)	King size bed	2	Shared bathroom with bath only (shared with bedroom 3). Space for a cot.
Bedroom 3 (first floor)	Two single beds	2	Shared bathroom with bath only (shared with bedroom 2).
Bedroom 4 (first floor)	King size bed	2	Bedroom accessed via kitchen stairs. Shared shower room (shared with bedroom 5). Wooden cot.
Bedroom 5 (first floor)	Two single beds	2	Bedroom accessed via kitchen stairs. Shared shower room (shared with bedroom 4).
Bedroom 6 (second floor)	Two king size beds	4	Shared shower room (shared with bedroom 7). Space for a cot. Sofa bed available (additional cost – see below).
Bedroom 7 (second floor)	King size bed, plus single bed	3	Shared shower room (shared with bedroom 6). Space for a cot.
Eastwold Barn			
Bedroom 1 (first floor)	Super king size bed	2	Ensuite bathroom with bath and separate shower. Sofa bed available (additional cost – see below). Wooden cot.
Bedroom 2 (first floor)	Two king size beds	4	Ensuite shower room. Space for a cot.
Bedroom 3 (ground floor)	Two king size beds	4	Ensuite shower room with grab rails and shower chair. Space for a cot.
Bedroom 4 (ground floor)	Super king size bed	2	Ensuite shower room. Space for a cot.



Eastwold Barn			
Bedroom 5 (ground floor)	King size bed	2	Ensuite shower room.
Bedroom 6 (ground floor)	King size bed	2	Ensuite shower room.
Total		28*	

Please note, none of the super king or king size beds are zip and link so cannot be configured as twins.

There are 2 sofa beds and 3 small camp beds available for an additional cost of £50 per person, per stay. The camp beds can fit into the following bedrooms:

Woldfoot Farm: Bedrooms 1, 2, 4, 6 & 7

Eastwold Barn: Bedrooms 1, 2 & 4

***Please note, although there are beds for 38 guests (including sofa beds and camp beds), the maximum sleeping capacity allowed at Whin Bush Farm is 28 guests.**

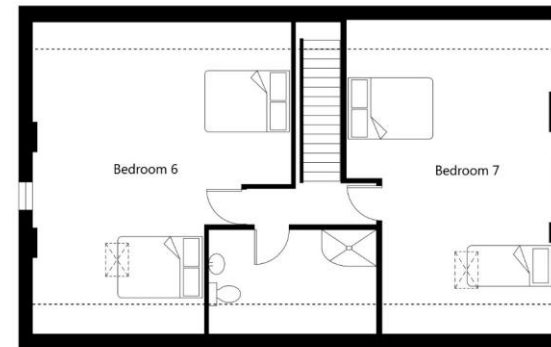
See below for floor plans of both properties.



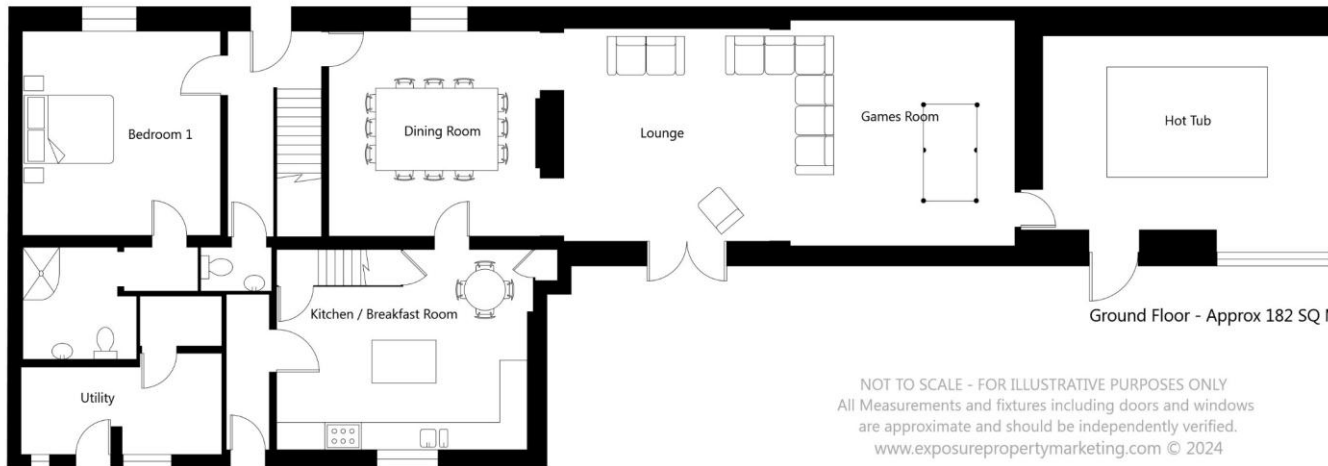
FLOOR PLANS - WOLDFOOT FARM



First Floor - Approx 106 SQ M



Second Floor - Approx 78 SQ M



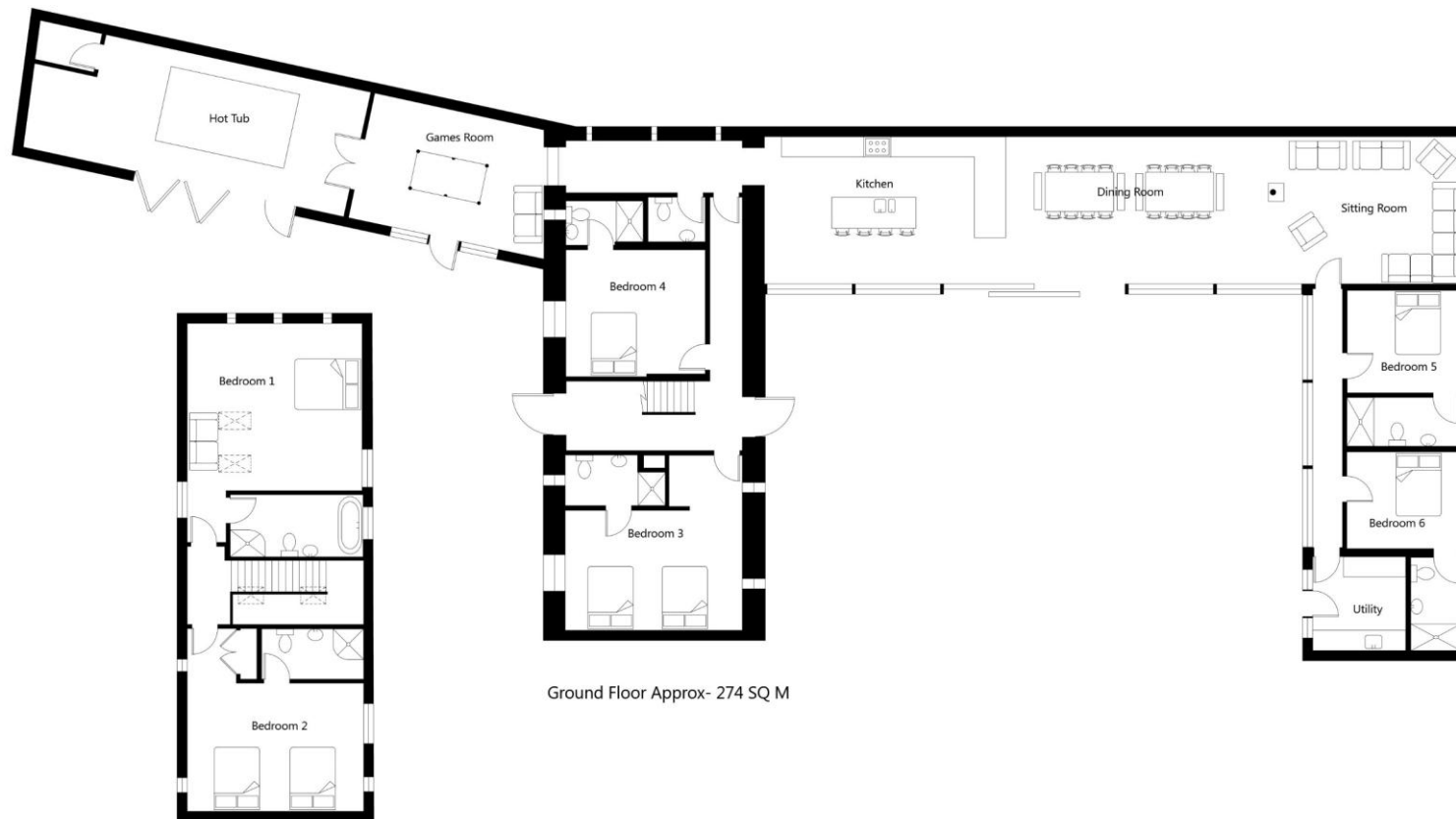
Ground Floor - Approx 182 SQ M

NOT TO SCALE - FOR ILLUSTRATIVE PURPOSES ONLY
All Measurements and fixtures including doors and windows
are approximate and should be independently verified.
www.exposurepropertymarketing.com © 2024



BIG HOUSE EXPERIENCE

FLOOR PLANS – EASTWOLD BARN



Ground Floor Approx- 274 SQ M

First Floor Approx - 75 SQ M

NOT TO SCALE - FOR ILLUSTRATIVE PURPOSES ONLY
All Measurements and fixtures including doors and windows
are approximate and should be independently verified.
www.exposurepropertymarketing.com © 2024



BIG HOUSE EXPERIENCE