



LIST OF BEDROOMS & FLOOR PLANS AT GREENMARSH FARM

BEDROOMS – sleeps 12 (+2*) in 6 bedrooms

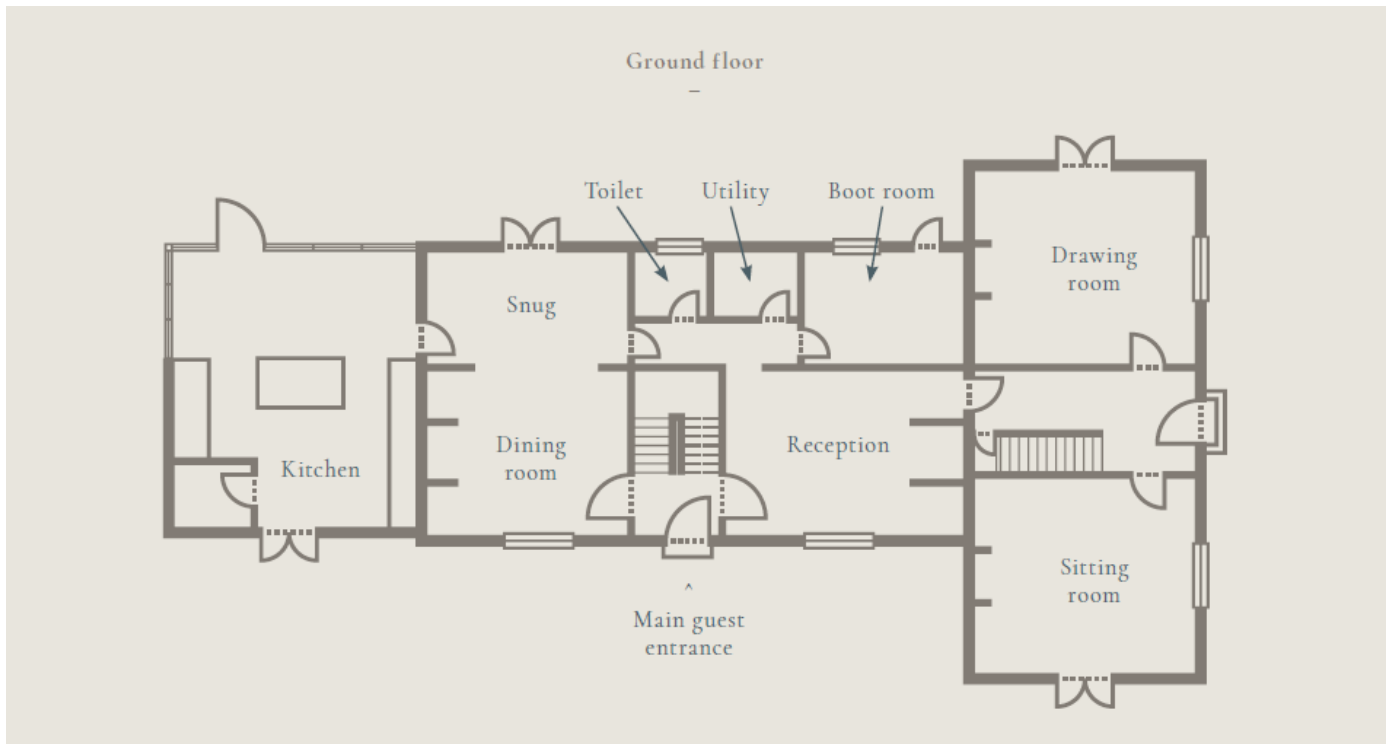
● indicates a choice of bed configuration

Bedroom	Beds	Sleeps	Features
1. The Elmley Room (First floor – accessed via the south staircase)	King size, modern style four poster bed. Room for optional extra guest bed.	2 (+1)	Two large sash windows facing north and south. Large ensuite with double walk-in rainfall shower and double basin, plus free-standing Verdigris bath in the bedroom.
2. The Pink Room (First floor – accessed via the south staircase)	Super king size bed (can be divided into two single beds) ●	2	Views south from the bed directly in front of the sash window. Ensuite with rainfall shower (note: bathroom behind partition in bedroom).
3. The Blue Room (First floor – accessed via the west staircase)	Super king size bed (can be divided into two single beds) ● Room for optional extra guest bed.	2 (+1)	Ensuite with large rainfall shower, double basin and free-standing rolltop bath.
4. The Yellow Room (First floor – accessed via the west staircase)	Super king size bed (can be divided into two single beds) ● Room for optional extra guest bed.	2 (+1)	Ensuite with large rainfall shower, double basin and free-standing rolltop bath.
5. The Attic Room (Second floor family suite – accessed via the west staircase)	Super king size bed (can be divided into two single beds) ● Room for optional extra guest bed.	2 (+1)	Shared family bathroom (shared with The Nest Room) on spacious landing with shower over bath.
6. The Nest Room (Second floor family suite – accessed via the west staircase)	2 x full-size single 'bunk' style beds	2	Shared family bathroom (shared with The Attic Room) on spacious landing with shower over bath.
Total		12 (+2*)	

*Two extra fold-out guest beds are available for an additional cost of £50 per bed. Please note the maximum capacity at Greenmarsh Farm is 14 guests.



FLOOR PLANS – ground floor



FLOOR PLANS – first & second floors

