



LIST OF BEDROOMS & FLOOR PLANS AT ROCKMOOR HOUSE

BEDROOMS – sleeps 16 in 8 bedrooms*

*Please note: Lion is a living area that can double up as an extra bedroom. This room features a large sofa bed so may be best suited to children.

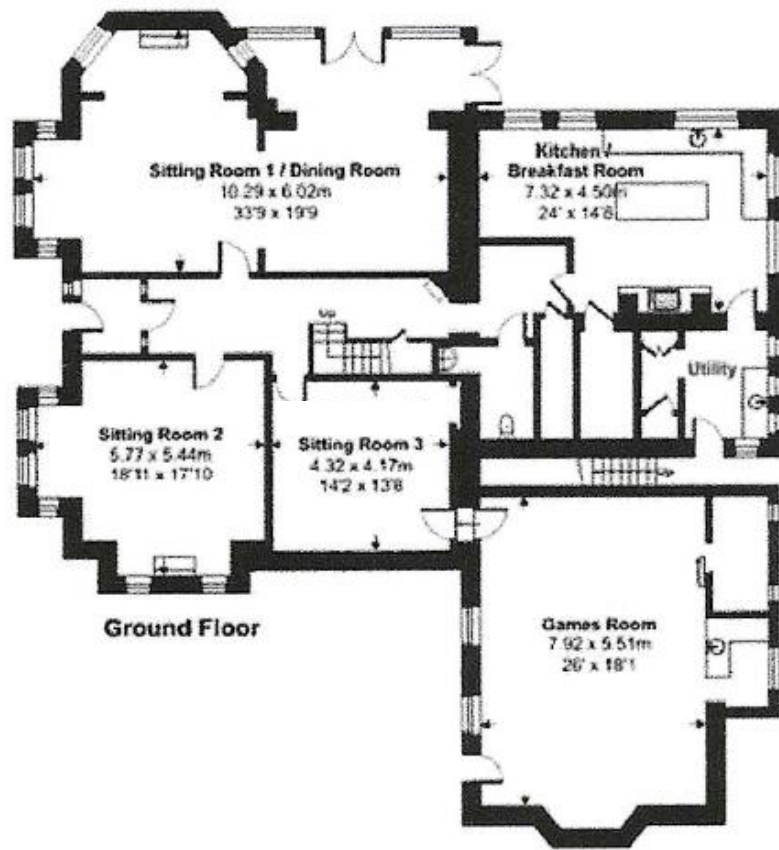
● indicates a choice of bed configuration

Bedroom	Beds	Sleeps	Features
Zebra (first floor)	Master bedroom with super king size bed	2	En-suite bathroom, walk-in wardrobe, occasional chair, TV.
Gorilla (first floor)	Super king size bed (can be divided into two single beds) ●	2	Very large bedroom with sofa and coffee table.
Flamingo (first floor)	Four poster super king size bed	2	Silver Versailles style furniture.
Leopard (first floor)	Super king size bed (can be divided into two single beds) ●	2	Bay window with sofa, Victorian feature fireplace, en-suite shower room.
Giraffe (second floor)	Super king size bed (can be divided into two single beds) ●	2	
Elephant (second floor)	Super king size bed (can be divided into two single beds) ●	2	
Rhino (second floor)	Small double bed	2	Balcony.
Lion (second floor)	Large sofa bed*	2	Lounge if not used as a bedroom. TV and dining table seating 6 people.
Total		16	

There is also an extra z-bed that can be used for the additional cost of £60.



FLOOR PLANS – ground floor



FLOOR PLANS – first floor



FLOOR PLANS – second floor

