



LIST OF BEDROOMS & FLOOR PLANS AT WOLDFOOT FARM

BEDROOMS – sleeps 16* in 7 bedrooms

Bedroom	Beds	Sleeps	Features
Bedroom 1 (ground floor)	King size bed	2	Ensuite shower room with grab rails and shower chair. Space for a cot.
Bedroom 2 (first floor)	King size bed	2	Shared bathroom with bath only (shared with bedroom 3). Space for a cot.
Bedroom 3 (first floor)	Two single beds	2	Shared bathroom with bath only (shared with bedroom 2).
Bedroom 4 (first floor)	King size bed	2	Bedroom accessed via kitchen stairs. Shared shower room (shared with bedroom 5). Wooden cot.
Bedroom 5 (first floor)	Two single beds	2	Bedroom accessed via kitchen stairs. Shared shower room (shared with bedroom 4).
Bedroom 6 (second floor)	Two king size beds	4	Shared shower room (shared with bedroom 7). Space for a cot. Sofa bed available (additional cost of £50 per stay).
Bedroom 7 (second floor)	King size bed, plus single bed	3	Shared shower room (shared with bedroom 6). Space for a cot.
Total		16*	

Please note, none of the king size beds are zip and link so cannot be configured as twins.

One sofa bed (in bedroom 6) and two small camp beds are available for an additional cost of £50 per bed, per stay. The camp beds can fit into bedrooms 1, 2, 4, 6 or 7.

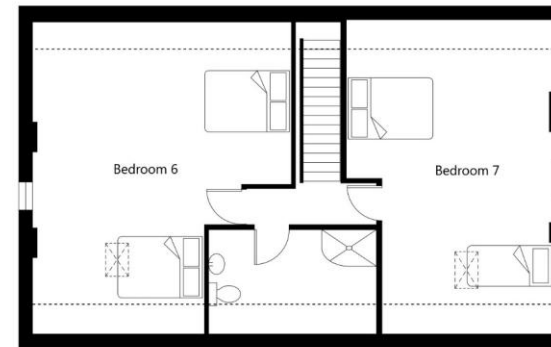
*Please note, although there are beds for up to 20 guests (including the sofa bed and camp beds at additional cost), the maximum sleeping capacity allowed is 16 guests.



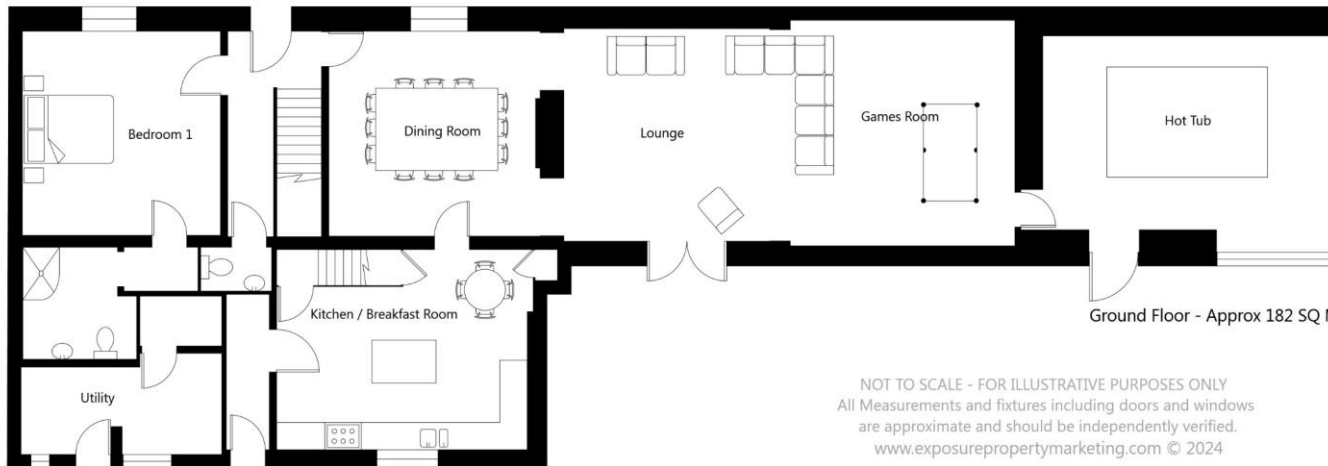
FLOOR PLANS



First Floor - Approx 106 SQ M



Second Floor - Approx 78 SQ M



Ground Floor - Approx 182 SQ M

NOT TO SCALE - FOR ILLUSTRATIVE PURPOSES ONLY
All Measurements and fixtures including doors and windows
are approximate and should be independently verified.
www.exposurepropertymarketing.com © 2024



BIG HOUSE EXPERIENCE