



## LIST OF ROOMS AT BAY VIEW HOUSE, PEMBROKESHIRE

Cradled between the cliffs of Waterwynch Bay and 10 acres of beautiful gardens, lawns, woodland and the private beach, every aspect of this [Bay View House](#) has been carefully designed to take full advantage of the spectacular views and to make life's simple pleasures an easy indulgence.

Here's a list of all available rooms:

### LIVING & ENTERTAINING SPACES

- **The Sky Room:** The stylish drawing room has been designed as an ideal relaxing and peaceful space for adults to relax and opens out on to the Beach Terrace through two sets of French doors.
- **The Great Hall:** The Great Hall starts with a grand double height entrance overlooked by the second-floor gallery and extends the length of the house with French doors opening on to the Great Hall Terrace for the spectacular sea view.
- **Billiard Room and Bar:** You might be forgiven for thinking that you have walked into a Gentleman's Club when you enter these stunningly proportioned rooms which needless to say houses the original full size Billiard Table installed by Lord Risdale in the 1920's.
- **The Den:** At the heart of the house, accessed from the Family Kitchen, Study and Hall, is this wonderful room designed for youngsters and teenagers to hang out.

### KITCHEN AND DINING

- **The Dining Room:** with the same stunning outlook as the Sky Room with two sets of French doors opening onto the Beach Terrace with the stunning views of Waterwynch Bay.
- **The Family Kitchen:** is the heart of the house and directly leads into the Dining Room, the Den and the Bar & Billiard Room. A wonderfully spacious family kitchen with a full size 4 door Redfye Range Cooker, gas hob, microwave, American style fridge freezer, Nespresso Machine, and 3 dishwashers.
- **The Cook's Kitchen:** Designed as two kitchens in one and perfect for professional Private Chefs, it has two separate work top areas, two ranges (gas hob and electric oven), two sinks. Two upright fridges and one upright freezer.



## BEDROOMS – sleeps 28 in 11 bedrooms

● indicates a choice of bed configuration

Bedroom	Beds	Sleeps	Features
Bedroom 1 – Amroth (Second Floor)	King-sized bed	2	En suite bath with shower over. Balcony with views of the sea and cliffs.
Bedroom 2 – Monkstone (Second Floor)	King-sized bed	2	En suite bath with shower over. Balcony with views of the sea and cliffs.
Bedroom 3 – Harbour (Second Floor)	Double four-poster plus 1 or 2 single beds ●	2 -4	En suite shower. Views of the beautiful grounds and valley through its French balcony door.
Bedroom 4 – Castle (First Floor)	2 Double and 2 single bunks above (suitable for children over 6 years old)	6	En suite shower. A spacious room with garden views.
Bedroom 5 – Priory (First Floor)	Superking or twin bed ●	2	En-suite bath with shower over and separate dressing room. Wonderful views from the bed across Waterwynch Bay.
Bedroom 6 - Sandtop (First Floor)	King-sized bed	2	En suite with overhead rain and body jet shower with slipper bath, bidet and his and hers sinks. Wonderful views from the bed across Waterwynch Bay. Our favourite bedroom in the house!
Bedroom 7 - Lyndstep (First Floor)	Super king, can be divided into two single beds ●	2	En-suite shower. Views of the valley and surrounding woods.
Bedroom 9 – Manorbier (First Floor)	King bed	2	En suite shower. Balcony with fabulous views across Waterwynch Bay.
Bedroom 2 - Barafundle (First Floor)	Super king, can be divided into two single beds ●	2	En suite shower. Balcony with views of the sea and cliffs.
Bedroom 10 – Little Haven (First Floor)	Super king, can be divided into two single beds. ● Plus, additional twin beds if required.	3-4	En-suite bath. Lovely view of the valley and the gardens.
Bedroom 11 – Broad Haven (First Floor)	Double bed	2	En suite shower. Feature window overlooking the formal gardens and valley.
<b>Total</b>		<b>28</b>	

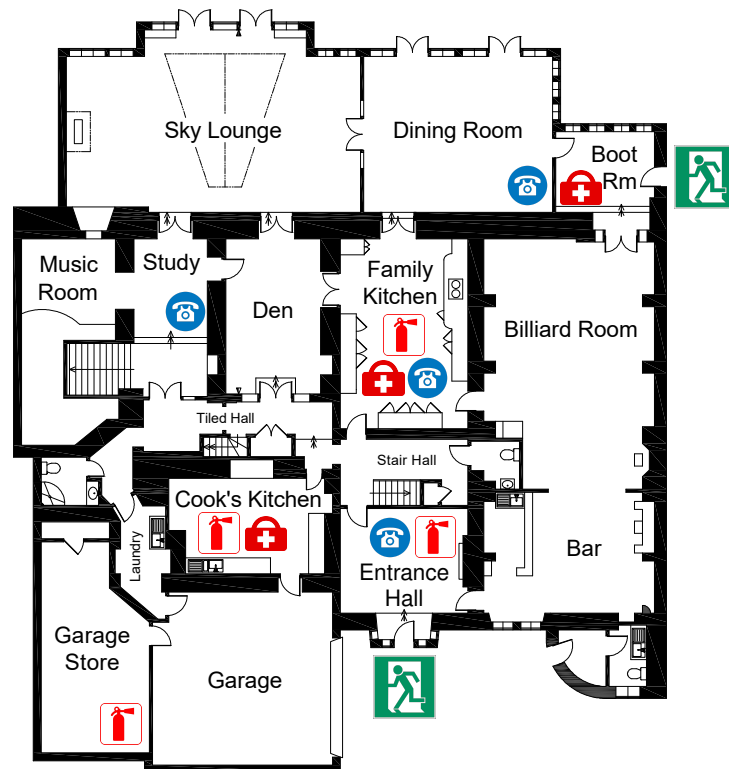
### Overall capacity:

- If each guest wants a private bedroom, the total capacity is 11.
- If each guest would like their own bed, the total capacity is 24.

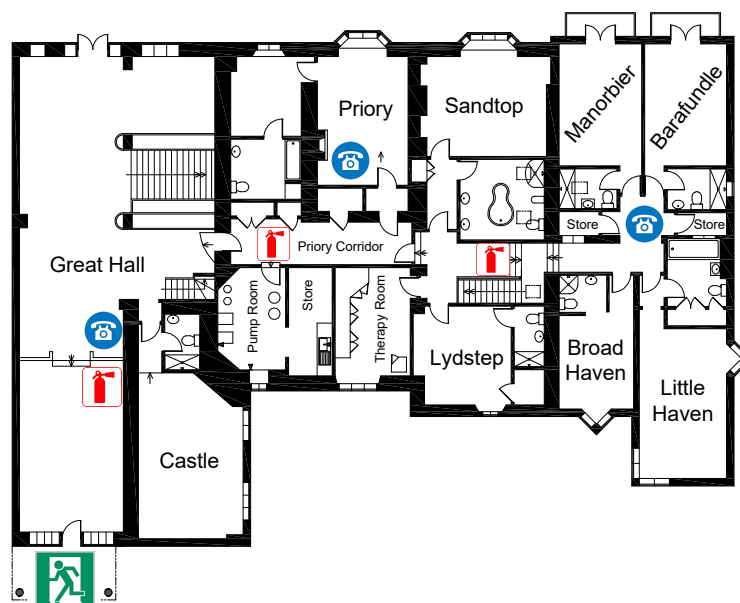


BIG HOUSE EXPERIENCE

## GROUND FLOOR PLAN



## FIRST FLOOR PLAN (ENTRANCE)



BIG HOUSE EXPERIENCE

## SECOND FLOOR PLAN

