



LIST OF BEDROOMS & FLOOR PLANS AT HORSESHOE HOUSE

Horseshoe House has 8 bedrooms, each with their own individual styling. Expect quirkiness, four-posters, raised baths and funky décor.

Sleeps 16 or up to 30 using extra sofa beds available with additional charges. Website prices are for up to 16 guests. For extra guests there is an additional charge of £120 per person for a 2-night midweek stay, £170 per person for a 2-night weekend, £200 per person for a 3-night weekend, £250 per person for a 4-night midweek stay and £400 per person for a week.

BEDROOMS – sleeps 16 in 8 bedrooms

• represents a choice in bedroom configuration

Bedroom	Beds	Sleeps	Features
Bedroom 1: The Profumo Affair (Second Floor)	Super king bed (can be split into two single beds) •	2	Use of family bathroom.
Bedroom 2: The Old Library (Second Floor)	Super king bed (can be split into two single beds) • plus double sofa bed	2-4	Large en-suite bathroom.
Bedroom 3: Serengeti (Second Floor)	Super king bed (can be split into two single beds) • plus double sofa bed	2-4	Use of family bathroom.
Bedroom 4: Hacienda (First Floor)	Super king bed, plus double sofa bed	2-4	En-suite bathroom. Large room.
Bedroom 5: McFardens Lair (First Floor)	Super-king four poster bed, plus double sofa bed	2-4	En-suite bathroom.
Bedroom 6: Urban Hideaway (First Floor)	King size bed (can be split into two single beds) • plus triple bunk bed (small double on bottom and single on top)	2-4	
Bedroom 7: The Hatch (First Floor)	Large bunk beds (3ft) suitable for adults	2	
Bedroom 8: The Peacock Suite (First Floor – above Games Room)	Super king bed (can be split into two single beds) • plus two double sofa beds	2-6	Large en-suite, bath and walk-in shower. A small kitchen area with breakfast bar.
Total		16-30	

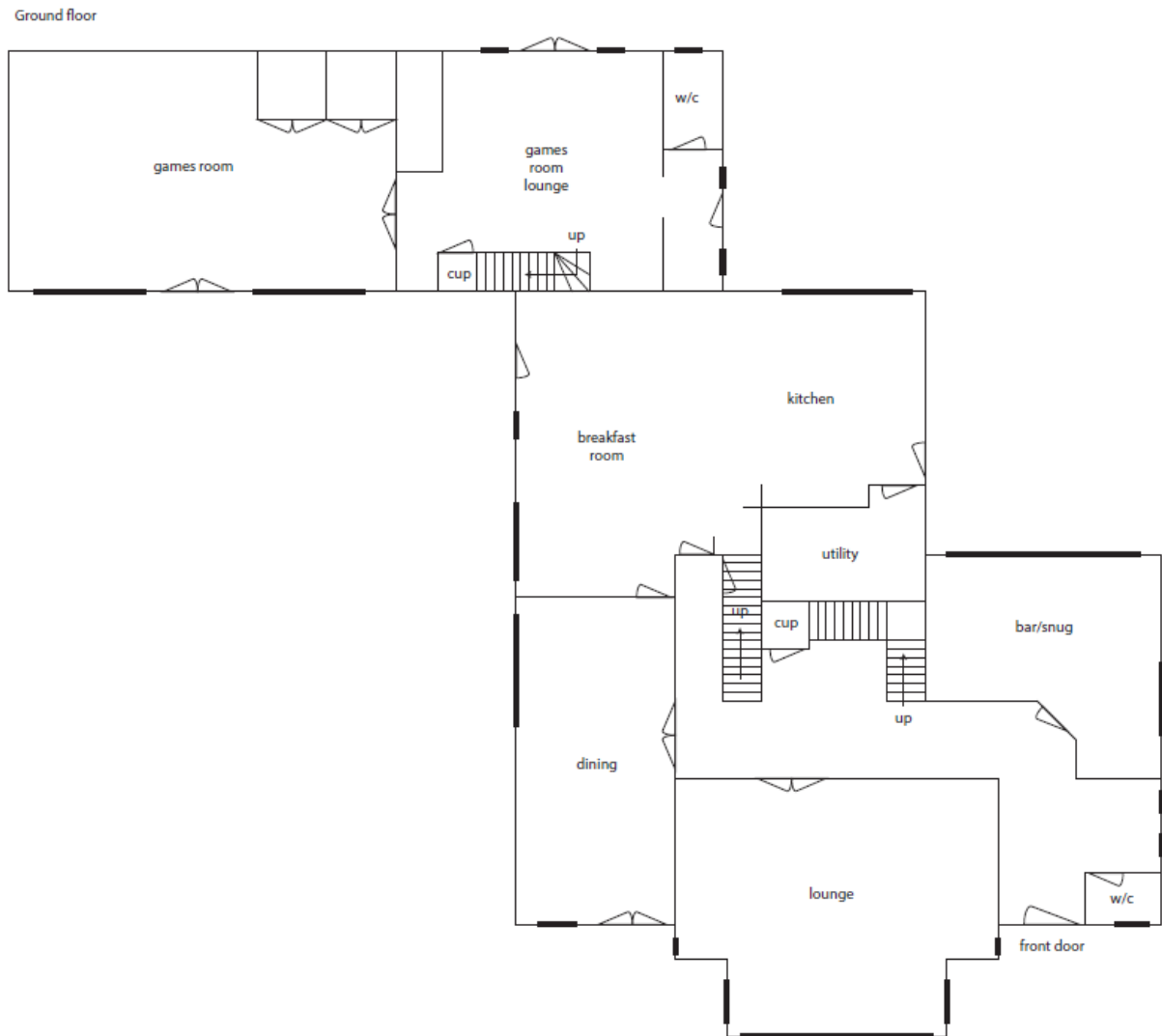


A note about occupancy:

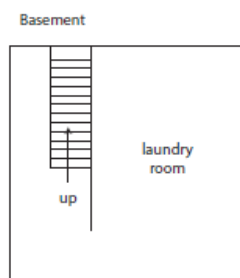
Extra guests, above 16, attract an extra fee (see charges detailed above). The house has enough beds to accommodate 30 guests. We generally recommend that the house is occupied by up to 24 guests. The main dining table can seat 24.

FLOOR PLANS – Ground Floor

Plans are for illustrative purposes only.

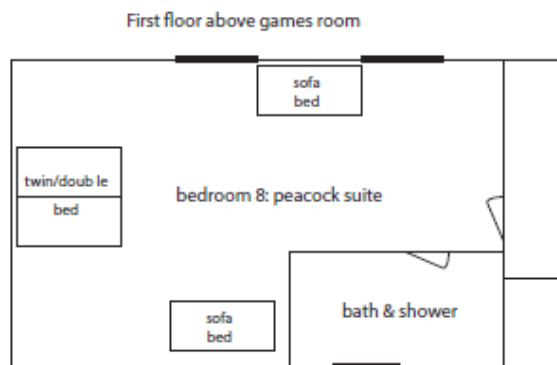


FLOOR PLANS – Basement

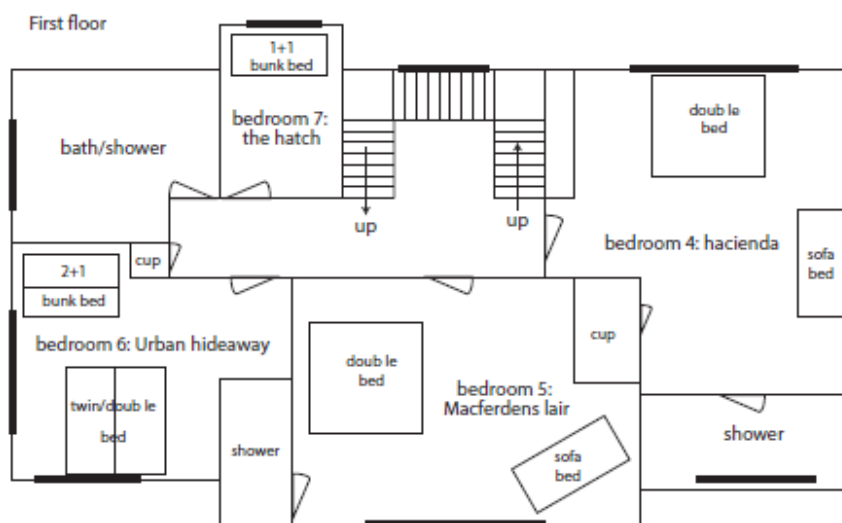


BIG HOUSE EXPERIENCE

FLOOR PLANS – First Floor above Games Room



FLOOR PLANS – First Floor



FLOOR PLANS – Second Floor

