



## LIST OF BEDROOMS & FLOOR PLANS AT WESTERLY LODGE

### BEDROOMS – sleeps up to 20 in 9 bedrooms\*

Please note, the maximum capacity permitted to stay at Westerly Lodge is 20 guests.

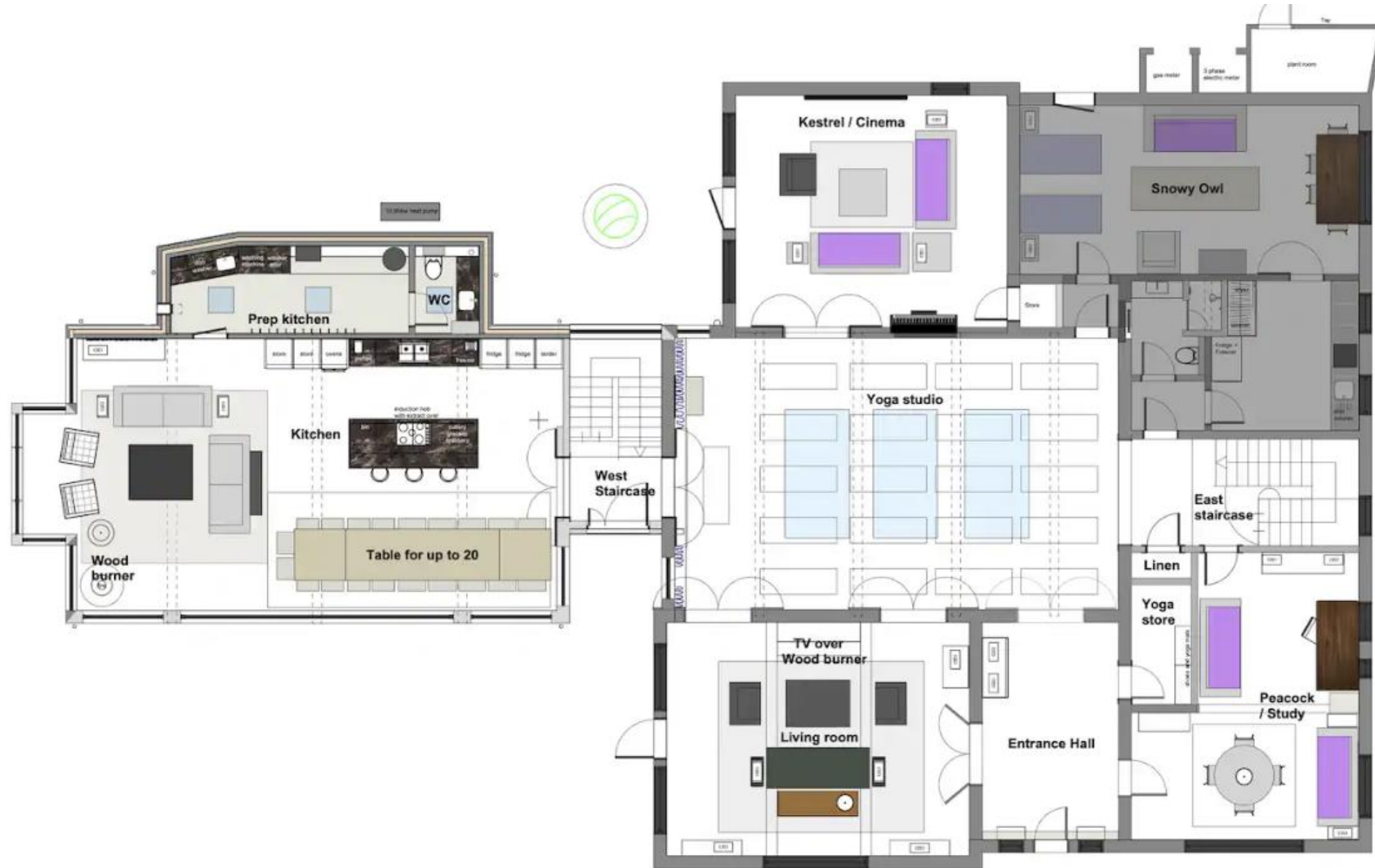
\*The study and cinema room can be converted into two extra bedrooms. Extra (moveable) beds are shown in a brighter purple on the floor plans below.

● indicates a choice of bed configuration

Bedroom	Beds	Sleeps	Features
River Suite (First floor)	Super king size bed, plus 2 single beds if required	2 (+2)	Freestanding stone bathtub, large walk-in rain shower, balcony with river views, twin marble vanity, Japanese toilet.
Heron (First floor)	Super king size bed, plus 2 single beds	4	River views and marble ensuite.
Kingfisher (First floor)	2 single beds (can be joined to make a double bed) ● plus an extra single bed if required	2 (+1)	Garden views and shared marble Jack and Jill bathroom with bath and shower.
Grebe (First floor)	2 single beds (can be joined to make a double bed) ●	2	Shared bathroom with bath and Shower.
Kite (First floor)	2 single beds (can be joined to make a double bed) ●	2	Marble ensuite.
Robin (First floor)	3 single beds (2 can be joined to make a double bed) ●	3	Marble ensuite with sensory body shower.
*Study – can be converted into a bedroom (Peacock) (Ground floor)	2 single beds /sofas if required	(+2)	Shared shower room.
*Cinema Room – can be converted into a bedroom (Kestrel) (Ground floor)	2 single beds /sofas if required	(+2)	Shared shower room.
Snowy Owl (Ground floor annex)	2 single beds (can be joined to make a double bed) ● plus an extra single bed if required	2 (+1)	Located next to the yoga studio. Garden access. Shared shower room.
<b>Total</b>		<b>17-20</b>	



# FLOOR PLANS – ground floor



# FLOOR PLANS – first floor

