



BEDROOMS AND LAYOUT OF SUFFOLK STABLES AND BARNs, SUFFOLK

Suffolk Stables has four luxurious king-size bedrooms have Hypnos beds and en suite wet rooms. In the barn, there is a sun room which opens to the master suite with its four-poster, eclectic furnishings and wet room with freestanding roll-top bath and powerful shower. Two further en suite bedrooms are found along a beamed corridor and both feature king-size Hypnos beds. Upstairs, the vaulted sitting room with its cosy armchairs and day beds (which can create extra space for two guests) has views across the parkland to ancient oaks plus its own adjacent wet room.

Here's a list of all available bedrooms:

SUFFOLK STABLES – sleeps 8 in 4 bedrooms

• indicates a choice of bed configuration

Bedroom	Beds	Sleeps	Features
Bedroom 1 (Ground Floor)	Super king bed, can be divided into two single beds •	2	En suite with shower
Bedroom 2 (Ground Floor)	Super king bed, can be divided into two single beds •	2	Master Suite En suite with bathroom and shower
Bedroom 3 (Ground Floor)	Double bed can be divided into two single beds •	2	En suite with shower
Bedroom 4 (Ground Floor)	Double bed can be divided into two single beds •	2	En suite with shower
Total		8	

BARN – sleeps 6 in 3 bedrooms

• indicates a choice of bed configuration

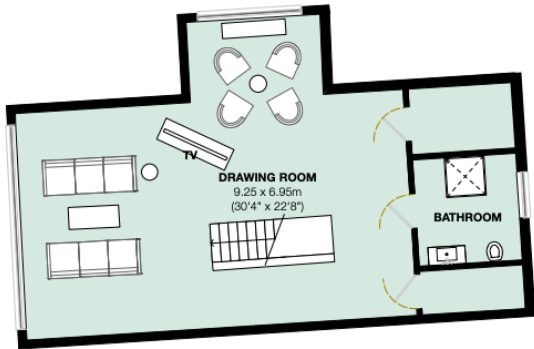
Bedroom	Beds	Sleeps	Features
Bedroom 1 (Ground Floor)	Double bed	2	Master Suite. En suite with bath and shower
Bedroom 2 (Ground Floor)	King-sized bed	2	En suite with shower
Bedroom 3 (Ground Floor)	King-sized bed	2	En suite with shower
Total		6	



FLOOR PLANS – SUFFOLK STABLES

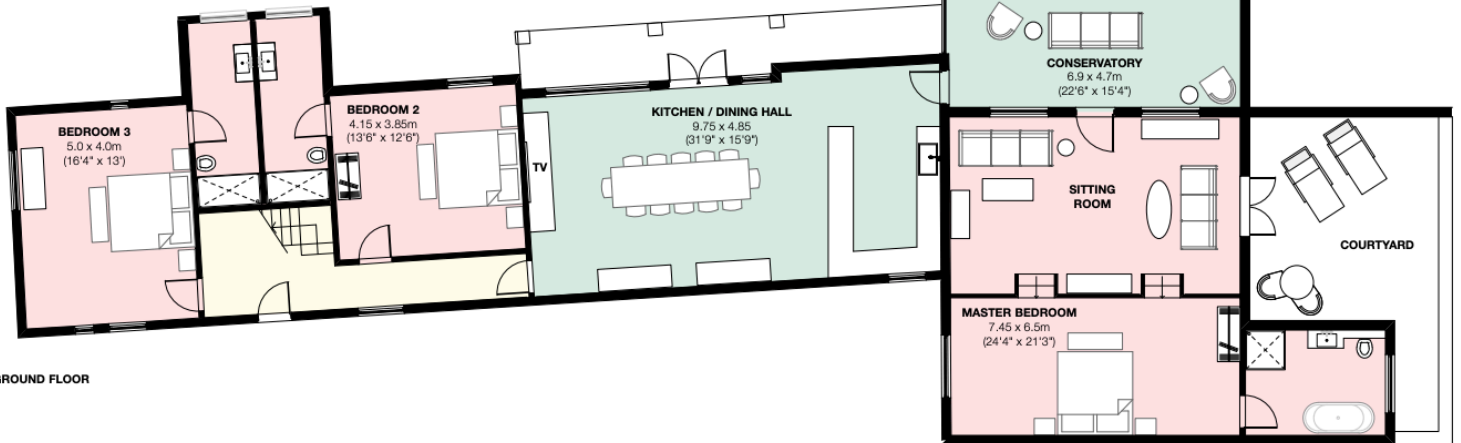


FLOOR PLANS – THE BARN



FIRST FLOOR

THE BARN
Total : 250 sqm



GROUND FLOOR

