



## LIST OF BEDROOMS & FLOOR PLANS AT THE VINEYARD

BEDROOMS – sleeps 28 in 14 bedrooms:

7 in the grange, 5 in the farmhouse and 2 in the apartment

● indicates a choice of bed configuration

Bedroom	Beds	Sleeps	Features
<b>The Grange</b>			
Suite 1 (ground floor)	Super king size bed (180cm)	2	Master bedroom situated in separate annex through covered archway. En-suite bathroom with bath, walk-in shower and steam room.
Suite 2 (first floor)	King size bed (150cm)	2	Situated in separate annex through covered archway. En-suite bathroom with bath and walk-in shower (ensuite behind $\frac{3}{4}$ height wall).
Suite 3 (first floor)	King size bed (150cm)	2	Situated in separate annex through covered archway. En-suite shower room.
Suite 4 (first floor)	King size bed (150cm)	2	En-suite shower room.
Suite 5 (first floor)	King size bed (150cm)	2	In-room bath with hand-held shower.
Suite 6 (first floor)	King size bed (150cm)	2	En-suite shower room.
Suite 7 (first floor)	Twin beds (90cm each – can be joined to make a super king size bed) ●	2	En-suite bathroom with bath and shower over (ensuite behind $\frac{3}{4}$ height wall).
<b>The Farmhouse</b>			
Principal Bedroom (first floor)	Super king size bed (can be divided into two single beds – 90cm each) ●	2	Separate dressing room. Wardrobe space. En-suite bathroom with bath and walk-in shower.
Bedroom 1 (first floor)	King size bed (150cm)	2	Wardrobe space. En-suite shower room.
Bedroom 2 (second floor)	King size bed (150cm)	2	Wardrobe space. Shared bathroom with bath and walk-in shower.



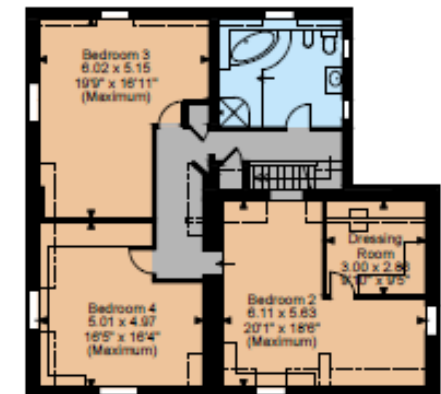
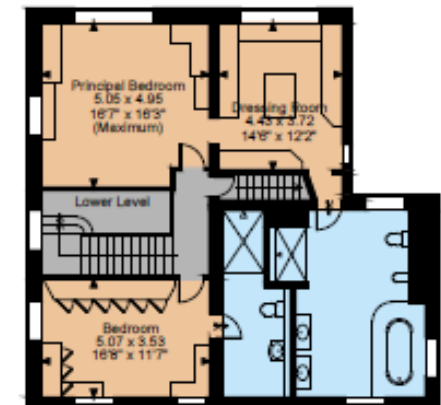
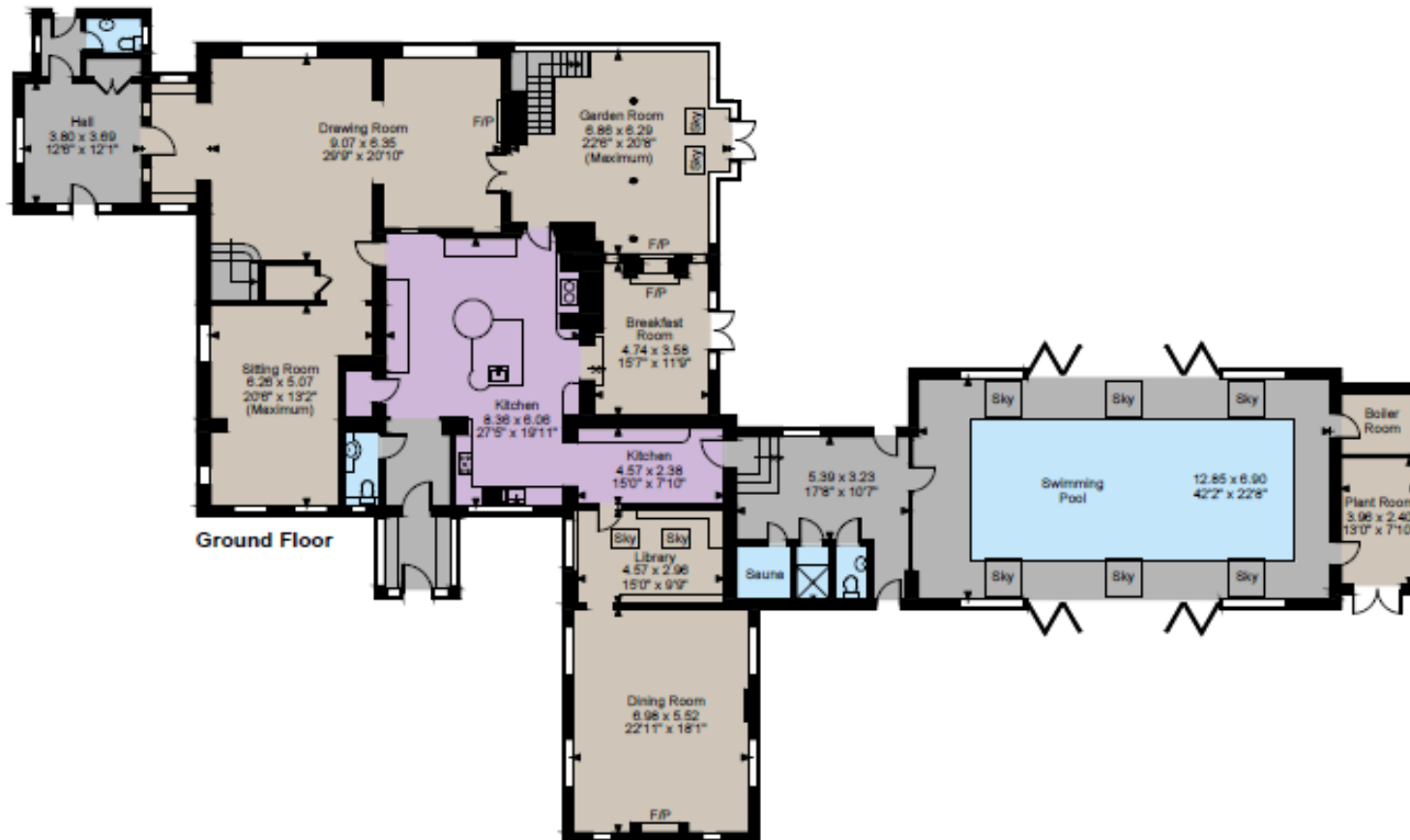
Bedroom	Beds	Sleeps	Features
Bedroom 3 (second floor)	Super king size bed (can be divided into two single beds – 90cm each) ●	2	Wardrobe space. Shared bathroom with bath and walk-in shower.
Bedroom 4 (second floor)	King size bed (150cm)	2	Wardrobe space. Shared bathroom with bath and walk-in shower.
<b>Apartment</b>			
Bedroom 1 (first floor)	Super king size bed (can be divided into two single beds – 90cm each) ●	2	Shared bathroom on ground floor with bath and separate shower.
Bedroom 2 (first floor)	Super king size bed (180cm)	2	Shared bathroom on ground floor with bath and separate shower.
<b>Total</b>		<b>28</b>	

### Safari Lodge

There is also a safari lodge available in the grounds of the farmhouse which sleeps up to four guests (one bedroom with a double bed, plus a double bed on a small mezzanine floor upstairs with limited headroom). There's also a shower room and a kitchenette with mini fridge, microwave and kettle. The safari lodge can be booked for an additional charge of £500 for 3 or 4-night stays and £750 for week-long stays.



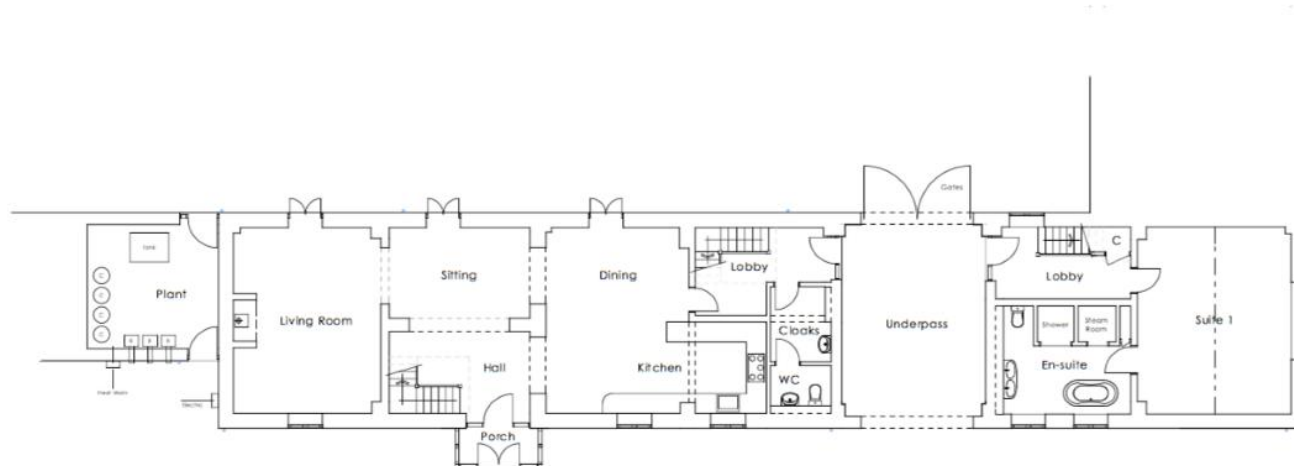
## FLOOR PLANS – FARMHOUSE



BIG HOUSE EXPERIENCE

## FLOOR PLANS – GRANGE

---



GROUND FLOOR PLAN



FIRST FLOOR PLAN



BIG HOUSE EXPERIENCE