



LIST OF BEDROOMS & FLOOR PLANS AT HORSESHOE HOUSE

Horseshoe House has 8 bedrooms, each with their own individual styling. Expect quirkiness, four-posters, raised baths and funky décor.

Sleeps 18 or up to 30 using 6 double sofa beds available with additional charges.

Website prices are for up to 18 guests. Additional charges for the double sofa beds (per sofa bed, per stay) are: £200 for 2-night stays (£250 in 2027); £250 for 3-night weekend or 4-night midweek stays (£300 in 2027) and £500 for 7-night stays.

BEDROOMS – sleeps 18 in 8 bedrooms

- represents a choice in bedroom configuration

Bedroom	Beds	Sleeps	Features
Bedroom 1: The Profumo Affair (Second Floor)	Super king bed (can be split into two single beds) •	2	Use of family bathroom.
Bedroom 2: The Old Library (Second Floor)	Super king bed (can be split into two single beds) • plus double sofa bed	2 (+2)	Large en-suite bathroom.
Bedroom 3: Serengeti (Second Floor)	Super king bed (can be split into two single beds) • plus double sofa bed	2 (+2)	Use of family bathroom.
Bedroom 4: Hacienda (First Floor)	Super king bed, plus double sofa bed	2 (+2)	En-suite bathroom. Large room.
Bedroom 5: McFardens Lair (First Floor)	Super king four poster bed, plus double sofa bed	2 (+2)	En-suite bathroom.
Bedroom 6: Urban Hideaway (First Floor)	King size bed (can be split into two single beds) • plus triple bunk bed (small double on bottom and single on top)	2-4	
Bedroom 7: The Hatch (First Floor)	Large bunk beds (3ft) suitable for adults	2	
Bedroom 8: The Peacock Suite (First Floor – above Games Room)	Super king bed (can be split into two single beds) • plus two double sofa beds*	2 (+4)	Large en-suite, bath and walk-in shower. A small kitchen area with breakfast bar.
Total		18-30	

*Please note, the 3D Matterport tour for the Peacock Suite incorrectly shows a previous layout with an additional single bed and one double sofa bed. The Peacock Suite now has two double sofa beds as shown in the table above (no additional single bed).

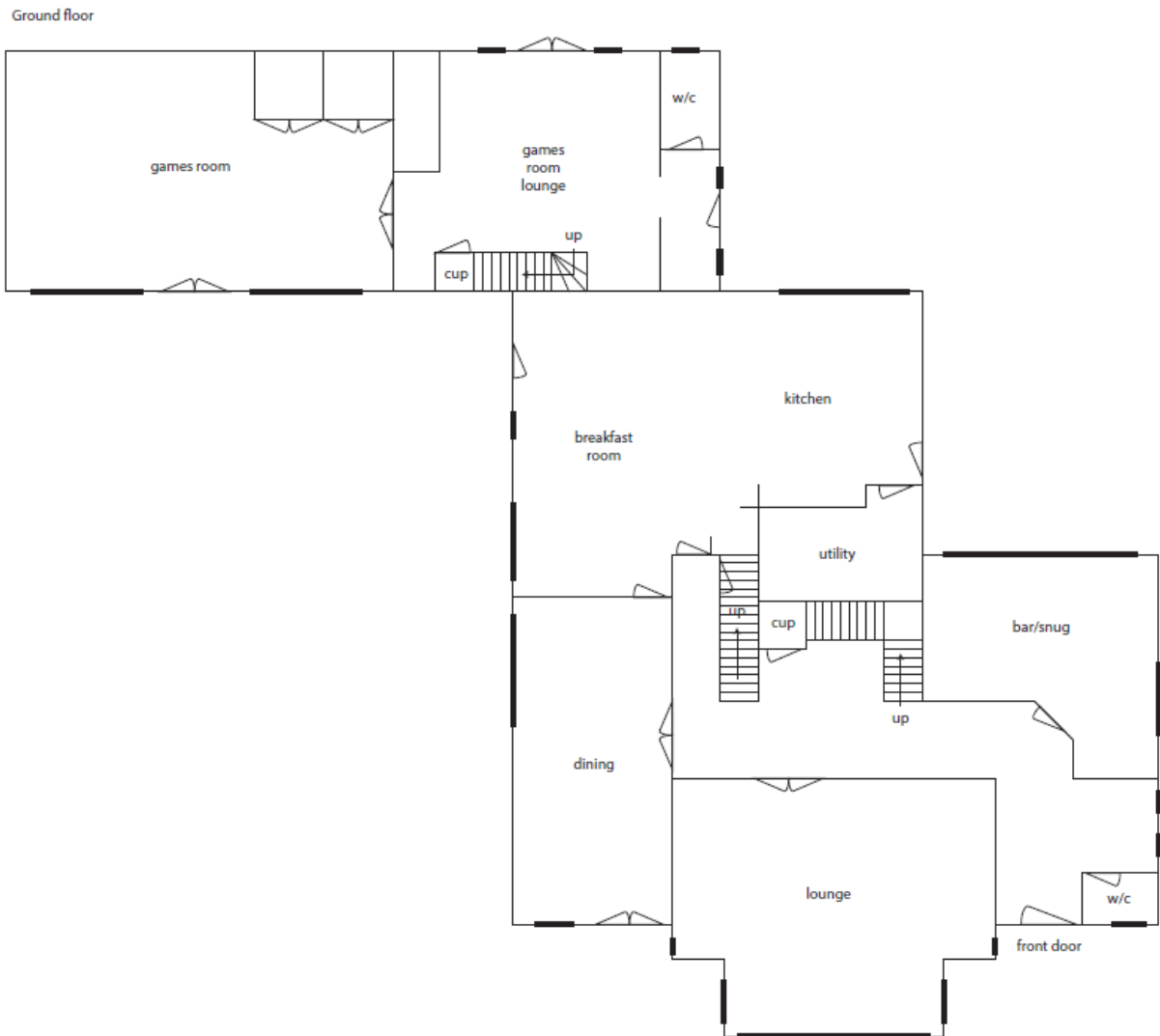


A note about occupancy:

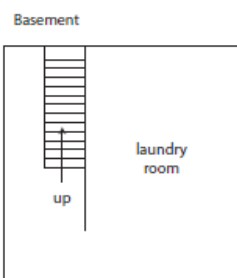
Extra guests, above 18, attract an extra fee (see charges detailed above). The house has enough beds to accommodate 30 guests. We generally recommend that the house is occupied by up to 24 guests. If there are over 24 adults, there will be 2 adults sharing the double sofa beds. The main dining table can seat 24.

FLOOR PLANS – Ground Floor

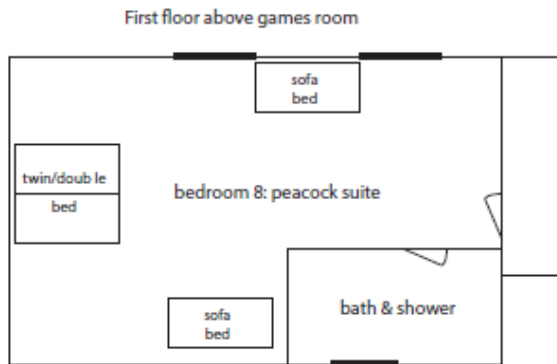
Plans are for illustrative purposes only.



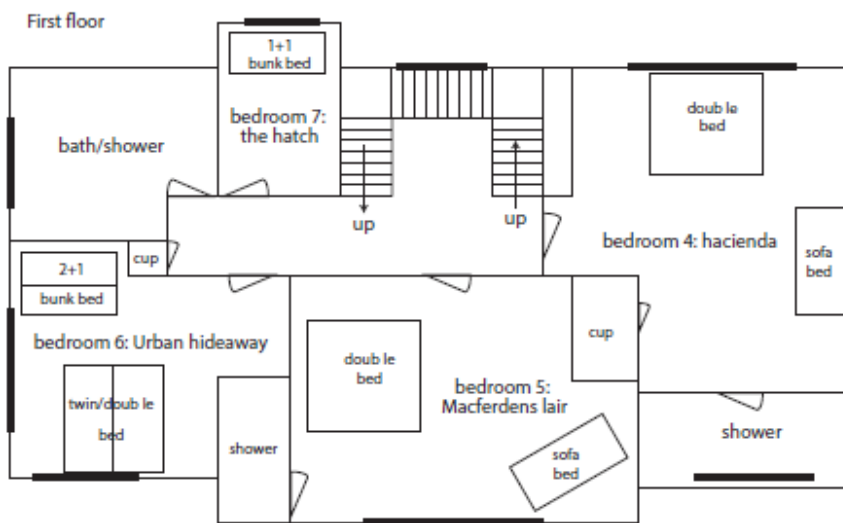
FLOOR PLANS – Basement



FLOOR PLANS – First Floor above Games Room



FLOOR PLANS – First Floor



FLOOR PLANS – Second Floor

