



## LIST OF BEDROOMS & FLOOR PLANS AT RIVERBANK INN

### BEDROOMS – sleeps 29-30\* in 12 bedrooms

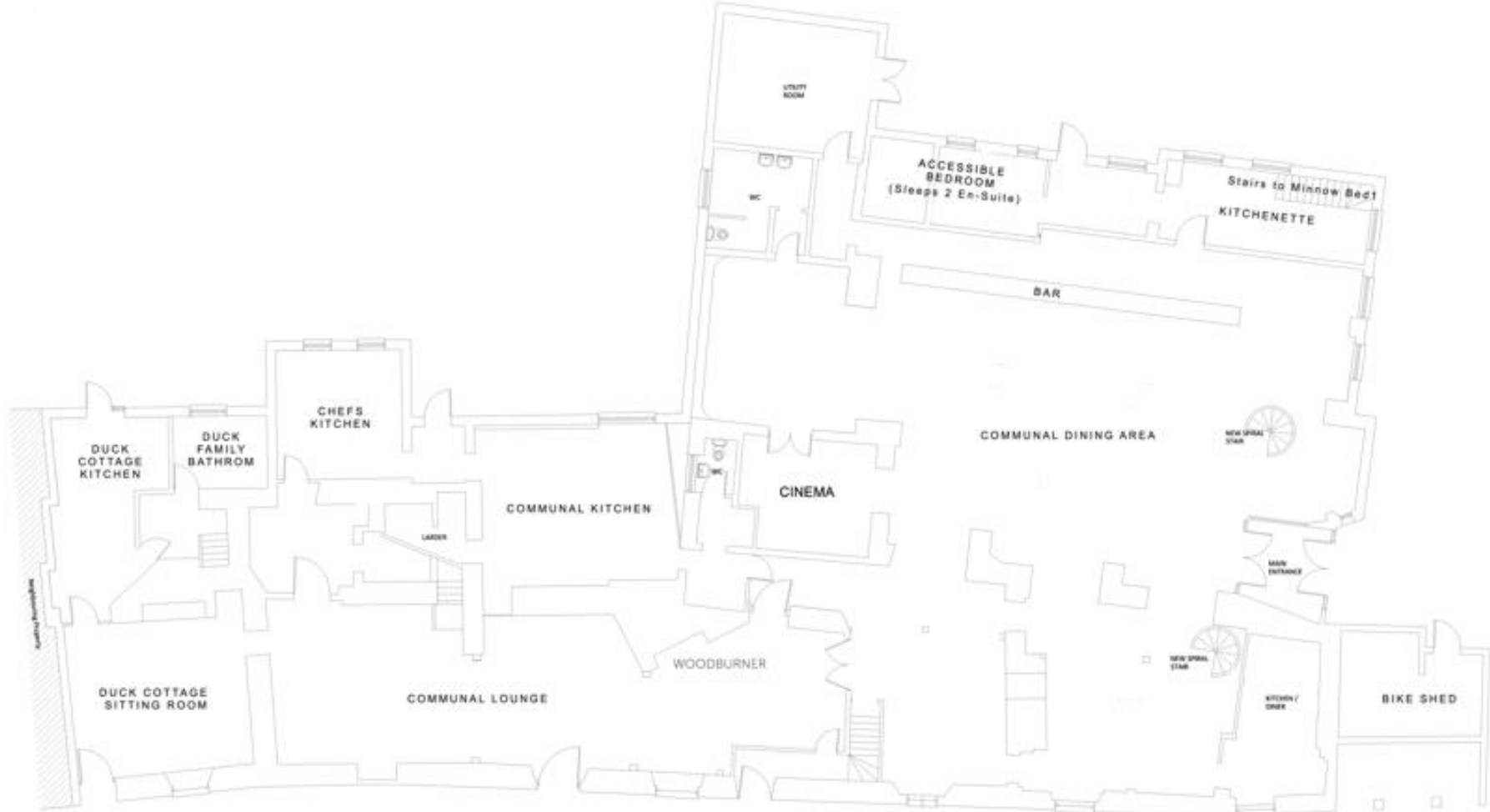
● indicates a choice of bed configuration

Bedroom	Beds	Sleeps	Features
Duck 1 (First floor)	Double bed, plus king size mattress on mezzanine	4	Shared bathroom (with bath & shower), lounge and kitchen (on ground floor) with Duck 2. River view.
Duck 2 (First floor)	Double bed	2	Shared bathroom (with bath & shower), lounge and kitchen (on ground floor) with Duck 1.
Heron 1 (First floor)	Super king size bed, plus king size mattress on mezzanine	4	In room freestanding bath. En-suite shower room. River view.
Heron 2 (First floor)	Super king size bed	2	In room freestanding bath. En-suite shower room. River view.
Kingfisher 1 (First floor)	Double bed	2	In room freestanding bath. En-suite shower room. River view.
Kingfisher 2 (First floor)	Double bed	2	In room freestanding bath. Shared bathroom (with bath & separate shower) with Kingfisher 3.
Kingfisher 3 (First floor)	Twin beds	2	Shared bathroom (with bath & separate shower) with Kingfisher 2. River view.
Minnow 1 (First floor)	King size bed	2	En-suite shower room. Optional adjoining door to Minnow 2.
Minnow 2 (First floor)	King size bed (can be divided into two single beds) ●	2	En-suite shower room. Optional adjoining door to Minnow 1.
Otter 1 (First floor)	King size bed (can be divided into two single beds) ●	2	In room freestanding bath. Jack and Jill shared en-suite shower room with Otter 2.
Otter 2 (First floor)	King size bed (can be divided into two single beds) ● plus a futon bed	2-3	Jack and Jill shared en-suite shower room with Otter 1.
Minnow 3 - Accessible Bedroom (Ground floor)	Double bed	2	En-suite accessible wet room.
<b>Total</b>		<b>29-30*</b>	

\*There is a small sofa bed in the Duck lounge that can sleep 1 additional guest.



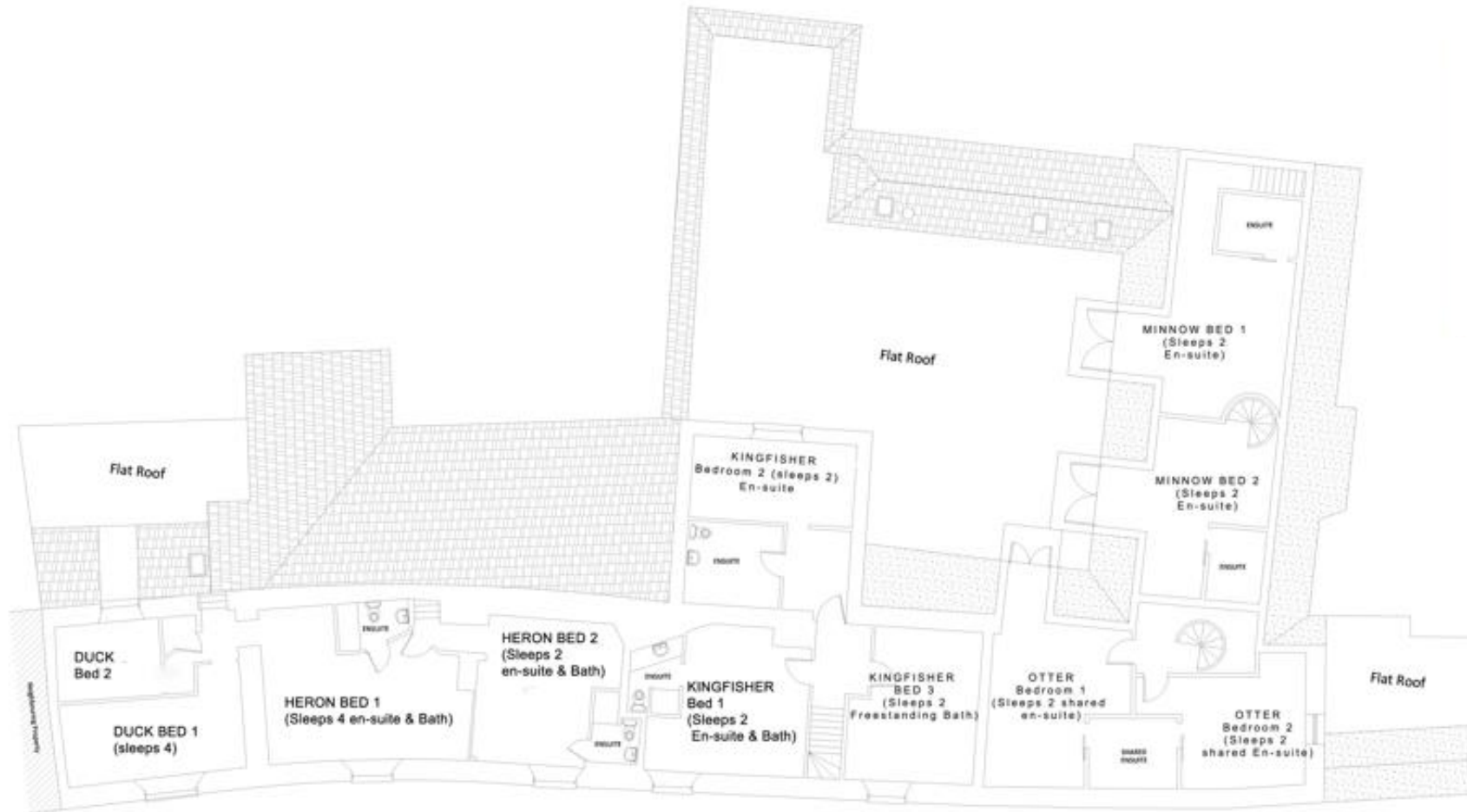
# GROUND FLOOR PLAN



GROUND FLOOR



# FIRST FLOOR PLAN



FIRST FLOOR

