



LIST OF BEDROOMS & FLOOR PLANS AT TILLBRIDGE HALL

BEDROOMS – sleeps 16 (+4*) in 8 bedrooms

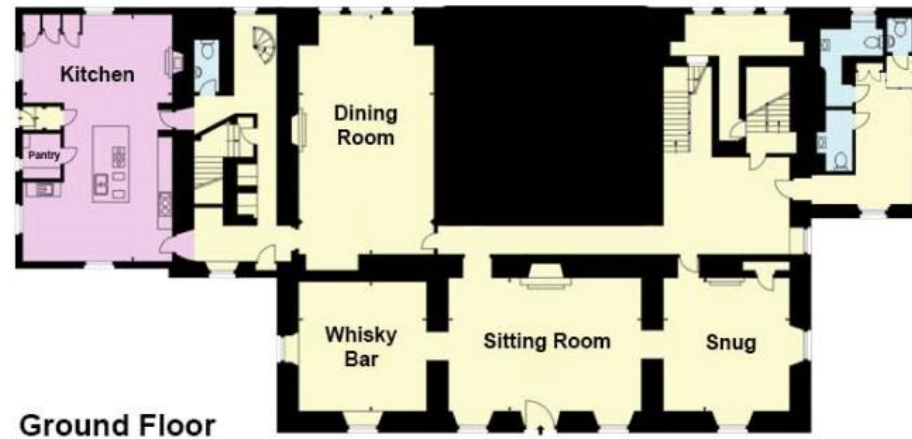
Bedroom	Beds	Sleeps	Features
Bedroom 1 - Kerr (First floor)	Super king size bed	2	Ensuite with bath with overhead shower.
Bedroom 2 - Blake (First floor)	Super king size bed	2	Ensuite with bath and two showers.
Bedroom 3 - Strother (First floor)	Super king size bed	2	Ensuite shower room.
Bedroom 4 - Kings Room (First floor)	Super king size bed	2	Ensuite shower room.
Bedroom 5 - Barrack Room (First floor)	Super king size bed	2	In room bath. Ensuite with two showers accessed via flight of stairs.
Bedroom 6 - The Percy (Second floor)	Super king size bed, plus double sofa bed	2 (+1)*	Ensuite with bath and shower. *Double sofa bed only suitable for one person.
Bedroom 7 - Culley (Second floor)	Super king size bed	2	Ensuite with bath and shower. Adjoins bedroom 8 – can form family suite with additional beds if needed.
Bedroom 8 - Nesbitt (Second floor)	Double bed, plus double sofa bed*	2 (+1)*	Ensuite shower room. Adjoins bedroom 7 – can form family suite with additional beds if needed. *Double sofa bed only suitable for one person.
Total		16 (+4)*	

Please note, none of the beds are zip and link so cannot be configured as twins.

*In addition to the two sofa beds, there are two single beds available on request that can be added to any of the bedrooms. Please note the maximum capacity of the house cannot exceed 20 guests.



FLOOR PLANS



BIG HOUSE EXPERIENCE