



LIST OF ROOMS AT DALES HALL

This characterful 6-bedroom holiday house lies on the edge of the Yorkshire Dales just outside the market town of Skipton in a secluded corner of a 3,000 acre country estate. You are assured a warm welcome with the wood burning stove ablaze, a bottle of wine chilling in the fridge and beautiful views from every window of woodland, meadows and rolling hills.

Here's a list of all available rooms:

- **Kitchen:** Fully equipped kitchen with all facilities and extensive space for cooking, eating and entertaining.
- **Dining Room:** An elaborate and outrageous surprise which takes your dining experience to another era.
- **Sitting Room:** An enormous space filled with a curious blend of timeless design pieces. The ultimate party room.
- **Library/Reading Area:** Lose yourself in the comfort of the quiet reading zone and enjoy one of the many books from the quirky collection.
- **Outside:** A mix of extras: fire pit, hot tub, hammock and BBQ area.

BEDROOMS – sleeps 11-12 in 6 bedrooms

Bedroom	Beds	Sleeps	Features
Bedroom 1 (Ground floor)	King-sized bed	2	Doors to the terrace. Shared bathroom with bedroom 2, with bath and separate shower.
Bedroom 2 (Ground floor)	King-sized bed	2	Doors to the terrace. Shared bathroom with bedroom 1, with bath and separate shower.
Bedroom 3 (First floor)	King-sized bed	2	Beautiful views of the grounds. Jack and Jill shared bathroom with bedroom 4, with bath and separate shower.
Bedroom 4 (First floor)	Single $\frac{3}{4}$ size bed	1	Jack and Jill shared bathroom with bedroom 3, with bath and separate shower.

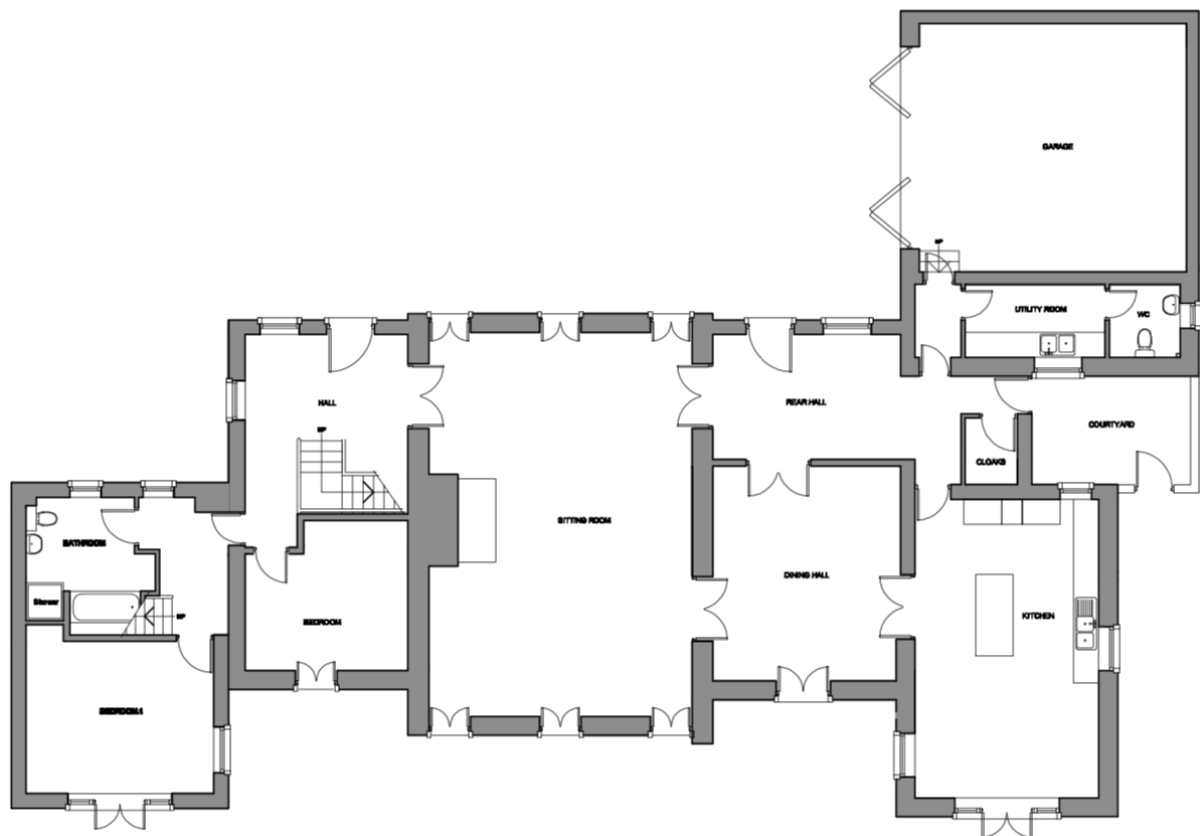


Bedroom	Beds	Sleeps	Features
Bedroom 5 (First floor)	King-sized bed	2	Shared bathroom with bedroom 6, with bath and separate shower.
Bedroom 6 – Master (First floor)	King-sized bed plus sofa bed for one	2-3	Huge walk-in wardrobe. Shared bathroom with bedroom 5, with bath and separate shower.
Total		11-12	

Overall capacity:

- If each guest wants a private bedroom, the total capacity is 6.
- If each guest would like their own bed, the total capacity is 6.

GROUND FLOOR



FIRST FLOOR

