



## LIST OF ROOMS & FLOOR PLANS AT THE BEACH HOUSE, CORNWALL

Swathed in glass and timbered gables, The Beach House is a luxury holiday home in Cornwall, located next to the prestigious Trevoze Head golf course and just a few minutes' walk from the beach at Booby's Bay, in one of North Cornwall's most desirable locations.

Here's a list of all the main rooms in the house:

### LIVING & ENTERTAINMENT SPACES

- **Living Room:** designed so everyone can relax together. There's a lovely homely feel created by the warming Stuv woodburner, the inviting sofas and the luxury linens, leather and wood materials.
- **Cinema Room:** with a 50" TV and Apple TV box, along with a huge leather sofa, Fat Boy beanbags and comfy cushions; there's even a PS3 with multiple controllers.
- **Study/Reading Room:** a stylish study with plenty of books provides the perfect space to relax and read or catch up on your emails.
- **Kitchen:** the kitchen features local stone surfaces and is equipped with a stylish breakfast bar and luxury appliances by Gaggenau. There is a bespoke dining table from New York with Cherner chairs in the adjacent dining room which has a wonderful beachside feel due to the huge driftwood features and lanterns throughout. Doors lead straight out to the terrace and garden - perfect for when you're having an evening BBQ.

### BEDROOMS – sleeps 10 in 5 bedrooms

---

● indicates a choice of bed configuration

| Bedroom                     | Beds                      | Sleeps | Features  |
|-----------------------------|---------------------------|--------|---|
| Bedroom 1<br>(Master Suite) | Super king size bed       | 2      | Freestanding Castello bath plus en-suite bathroom with Hansgrohe deluge showers and Fired Earth and Island Stone tiles. Private balcony with sea views. |
| Bedroom 2                   | Four poster king size bed | 2      | Freestanding Castello bath plus en-suite bathroom with Hansgrohe deluge showers and Fired Earth and Island Stone tiles. Private balcony with sea views. |
| Bedroom 3                   | Four poster king size bed | 2      | Freestanding Castello bath plus en-suite bathroom with Hansgrohe deluge showers and Fired Earth and Island Stone tiles. Private balcony with sea views. |



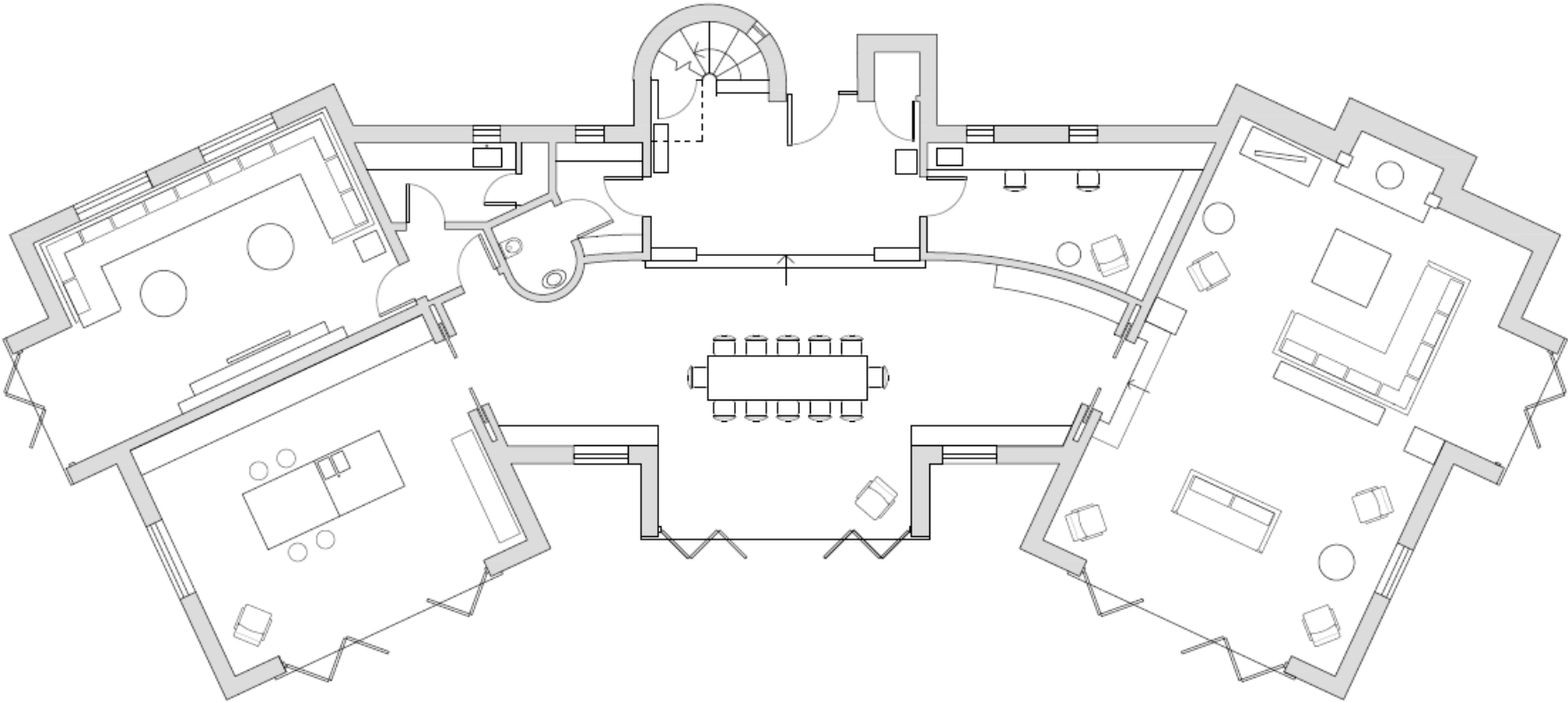
| Bedroom      | Beds   | Sleeps    | Features   |
|--------------|--|-----------|--|
| Bedroom 4    | Super king size bed, can be divided into two single beds ● | 2         | En-suite bathroom with Hansgrohe deluge showers and Fired Earth and Island Stone tiles. Private balcony with side sea views. |
| Bedroom 5    | Super king size bed, can be divided into two single beds ● | 2         | En-suite bathroom with Hansgrohe deluge showers and Fired Earth and Island Stone tiles. Private balcony with side sea views. |
| <b>Total</b> |  | <b>10</b> |  |

**Overall capacity:**

- If each guest wants a private bedroom, the total capacity is 5.
- If each guest would like their own bed, the total capacity is 7.

FLOOR PLANS – ground floor

---



FLOOR PLANS – first floor

---

