



## LIST OF BEDROOMS & FLOOR PLANS AT HIGHVALE BARN

BEDROOMS – sleeps 22 (+2) in 10 bedrooms

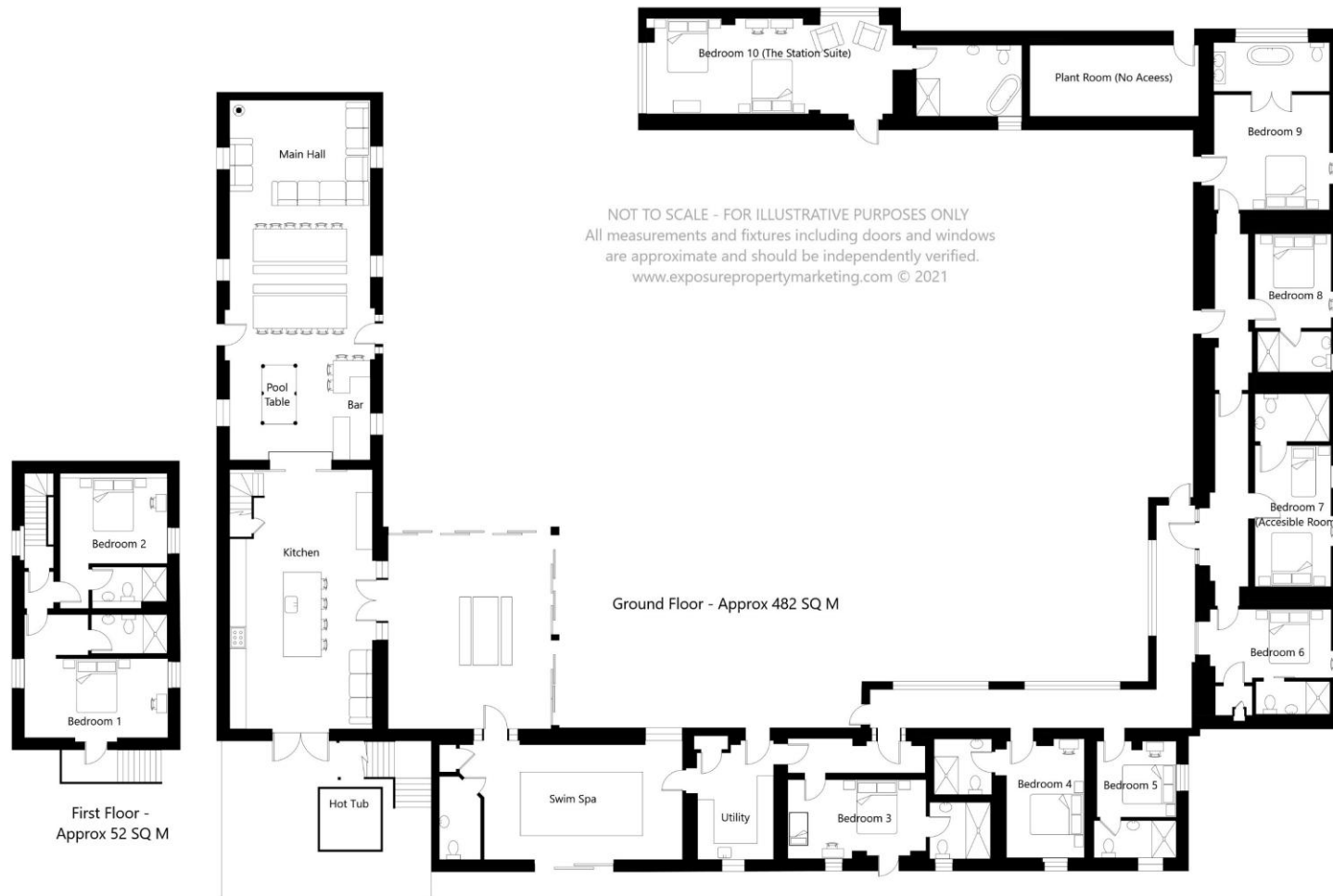
● indicates a choice of bed configuration

Bedroom	Beds	Sleeps	Features
Bedroom 1 (first floor)	King size bed (can be divided into two single beds) ●	2	TV. Ensuite shower room. Fire door with access to outside steps. Space for a cot.
Bedroom 2 (first floor)	King size bed (can be divided into two single beds) ●	2	TV. Ensuite shower room. Space for a cot.
Bedroom 3 (ground floor)	King size bed	2	TV. Ensuite shower room. Wooden cot.
Bedroom 4 (ground floor)	King size bed	2	TV. Ensuite shower room. Space for a cot.
Bedroom 5 (ground floor)	Double bed	1 (+1)	TV. Ensuite shower room. Double bed ideal for one guest but can accommodate two guests.
Bedroom 6 (ground floor)	King size bed	2	TV. Ensuite shower room. Space for a cot.
Bedroom 7 (ground floor)	King size bed and single profiling bed	3	TV. Accessible ensuite wet room with grab rails and shower chair.
Bedroom 8 (ground floor)	King size bed	2	TV. Ensuite shower room.
Bedroom 9 (ground floor)	King size bed, plus sofa bed*	2 (+1*)	TV. Ensuite bathroom with free standing bath. Space for a cot. *Sofa bed available for one extra guest for an additional charge of £50 per stay.
Bedroom 10 (ground floor - annex)	Two king size beds	4	Separate annex accessed across the courtyard. TV. Ensuite bathroom with freestanding bath and separate shower. Space for a cot.
<b>Total</b>		<b>22 (+2)</b>	



## FLOOR PLANS

---



BIG HOUSE EXPERIENCE