



LIST OF BEDROOMS & FLOOR PLANS AT STONEMOOR HOUSE

BEDROOMS – sleeps 14* in 6 bedrooms

● indicates a choice of bed configuration

Bedroom	Beds	Sleeps	Features
Tissington (first floor)	King size four poster bed	2	Spacious master bedroom with garden views. Room for a cot. En-suite bathroom with stand-alone bath, walk-in shower and double basins.
Dovedale (first floor)	King size bed, plus full-size single day bed	2 (+1)*	Double aspect room with garden and hillside views. Room for a cot. En-suite bathroom with roll-top bath and walk-in shower.
Darley (first floor)	King size bed, plus single sofa bed	2 (+1)*	Hillside views. Room for a cot. En-suite shower room.
Monsal (first floor)	Super king size bed (can be divided into two single beds) ●	2	Hillside views. Room for a cot. Shared shower room. Monsal and Castleton bedrooms are at one end of the house and make an ideal family suite (see floor plans).
Castleton (first floor)	Two sets of bunk beds	4	Shared shower room. Castleton and Monsal bedrooms are at one end of the house and make an ideal family suite (see floor plans).
Cressbrook (first floor)	Twin beds	2	Garden views. Shared shower room.
Total		14*	

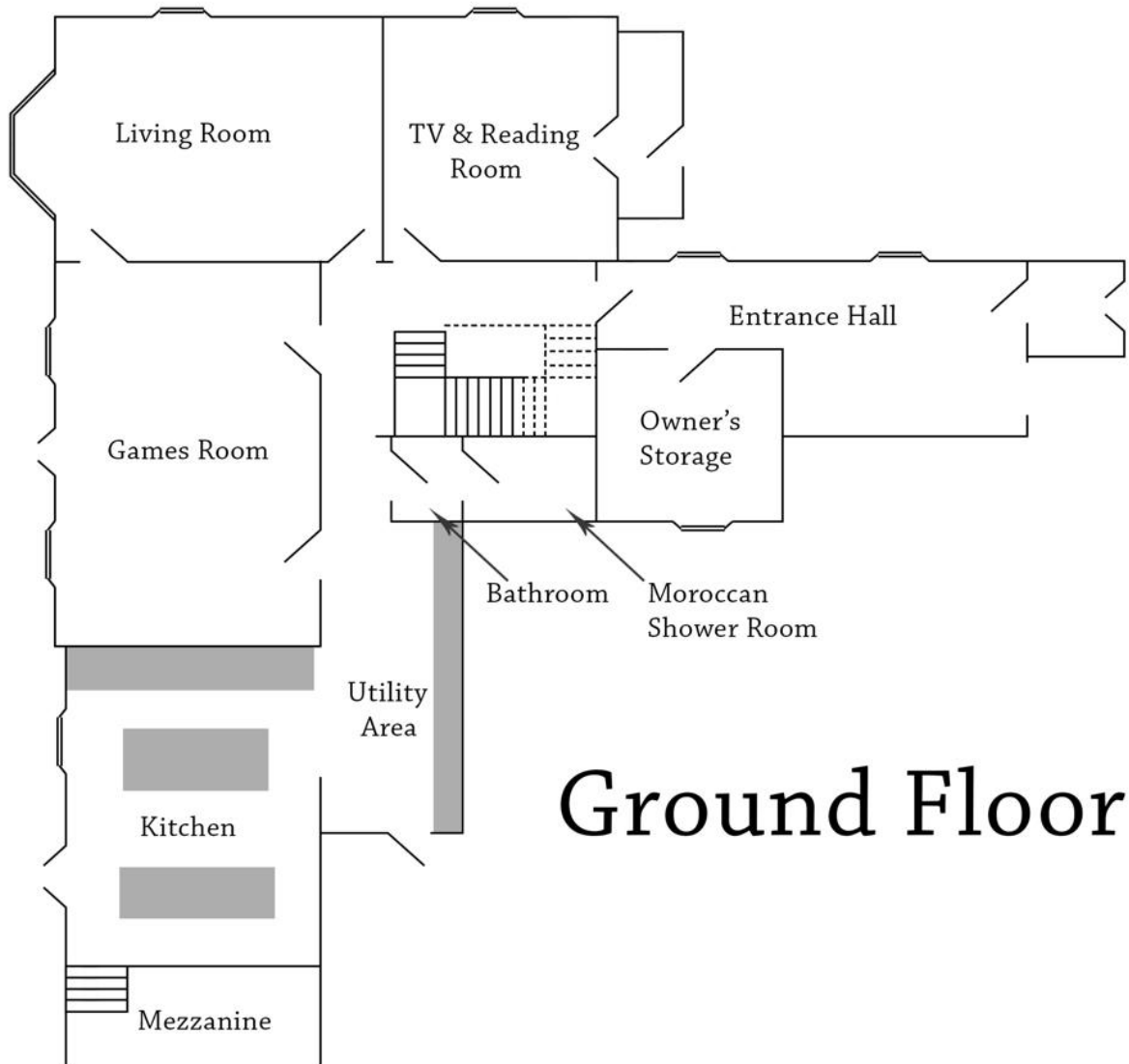
There is also a spectacular Moroccan wet room on the ground floor for those guests without an en-suite.

* There is an additional charge of £10 each for the extra single beds in the Dovedale and Darley bedrooms.

***Please note the maximum capacity at Stonemoor House is 14 plus 2 infants.**



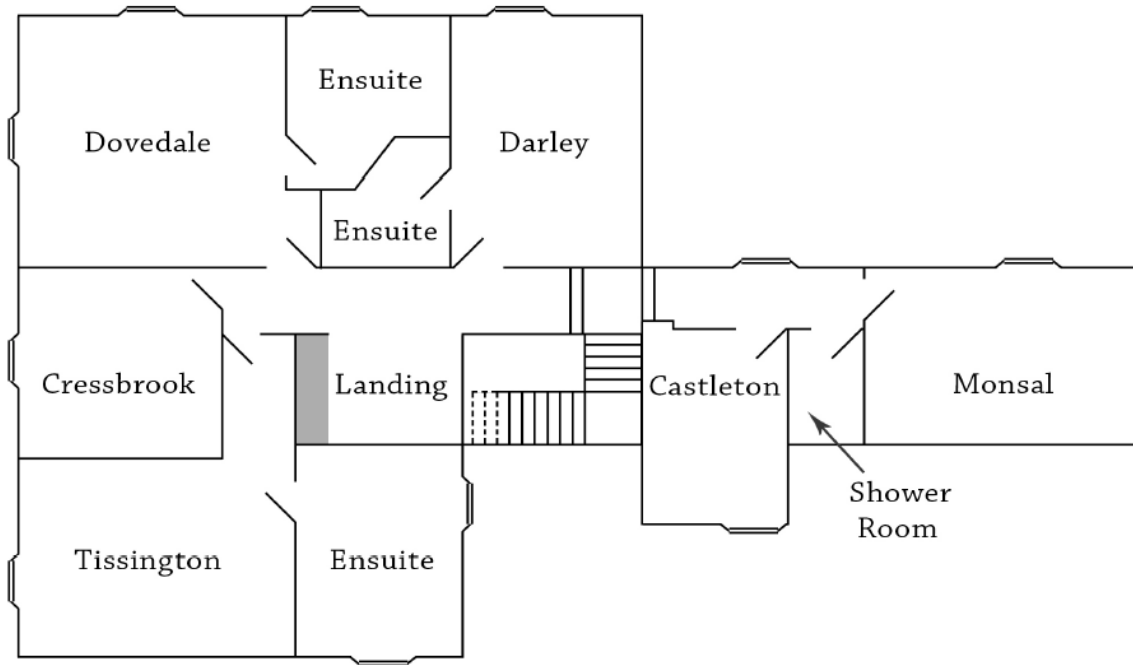
FLOOR PLANS – ground floor



Ground Floor



FLOOR PLANS – first floor



First Floor