



## LIST OF BEDROOMS & FLOOR PLANS AT HAWKINS' FOLLY

BEDROOMS – sleeps 16 in 7 bedrooms (3 in the main house and 2 in each of the two thatched cottages)

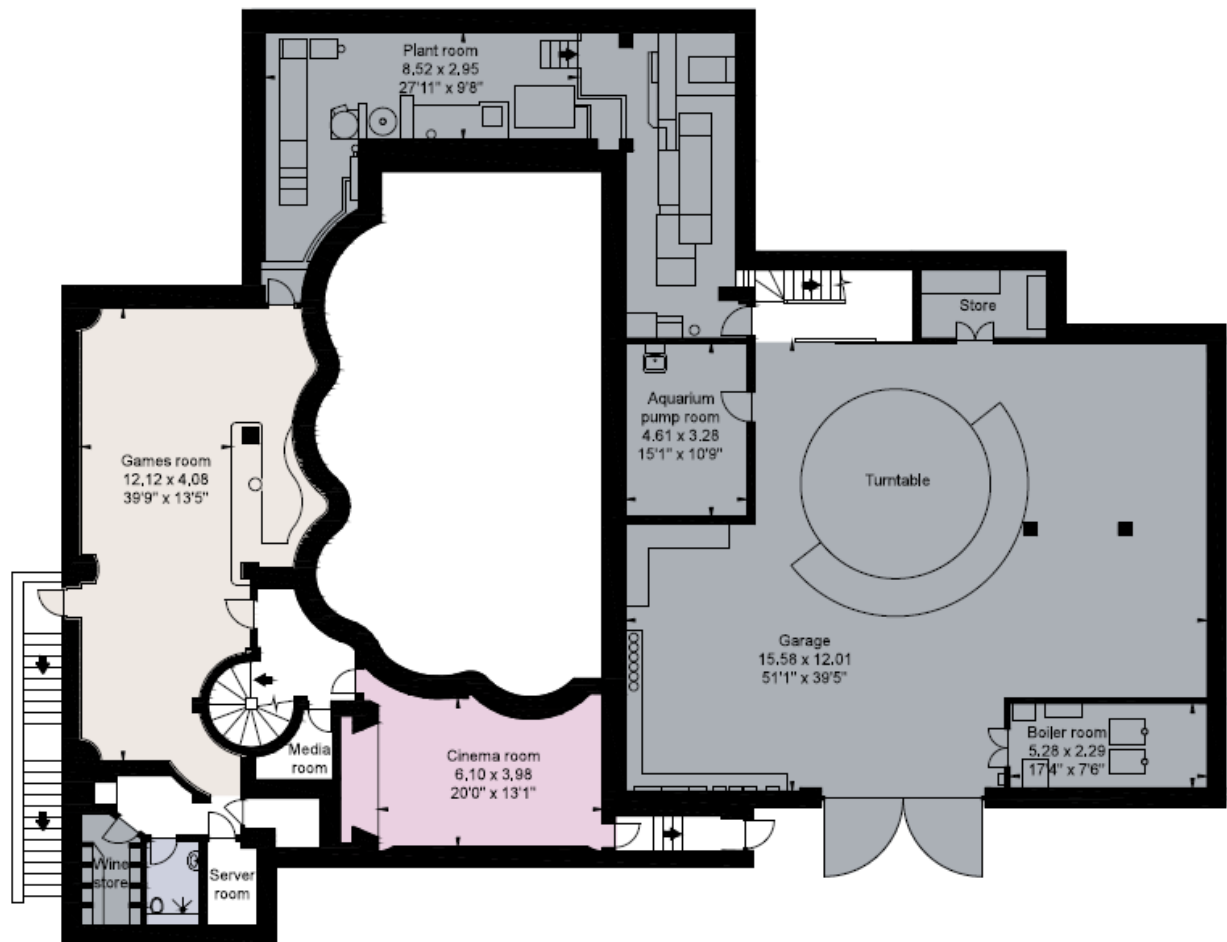
Bedroom	Beds	Sleeps	Features
Main House Bedroom No. 1 (Ground floor)	Super king size bed	2	En-suite wet room with shower, bath, toilet and double sink unit.
Main House Bedroom No. 2 Captain's Suite (First floor)	Emperor size bed	2	En-suite bathroom with bath (steps up), shower, toilet and vanity unit.
Main House Bedroom No. 3 (First floor)	Small double bed plus bunk beds (single on top, double on bottom)	2-4	Upper bunk bed more suitable for a child/teenager.
Cottage 1 Bedroom No. 1 (First floor)	Double bed	2	Shared shower room with walk-in shower, toilet and sink.
Cottage 1 Bedroom No. 2 (First floor)	Double bed	2	Shared shower room with walk-in shower, toilet and sink.
Cottage 2 Bedroom No. 1 (First floor)	Double bed	2	Shared shower room with walk-in shower, toilet and sink.
Cottage 2 Bedroom No. 2 (First floor)	Double bed	2	Shared shower room with walk-in shower, toilet and sink.
<b>Total</b>		<b>16</b>	

In Cottage 2 there is a sofa bed in the conservatory and an L-shaped double sofa bed in the lounge, both available on request.



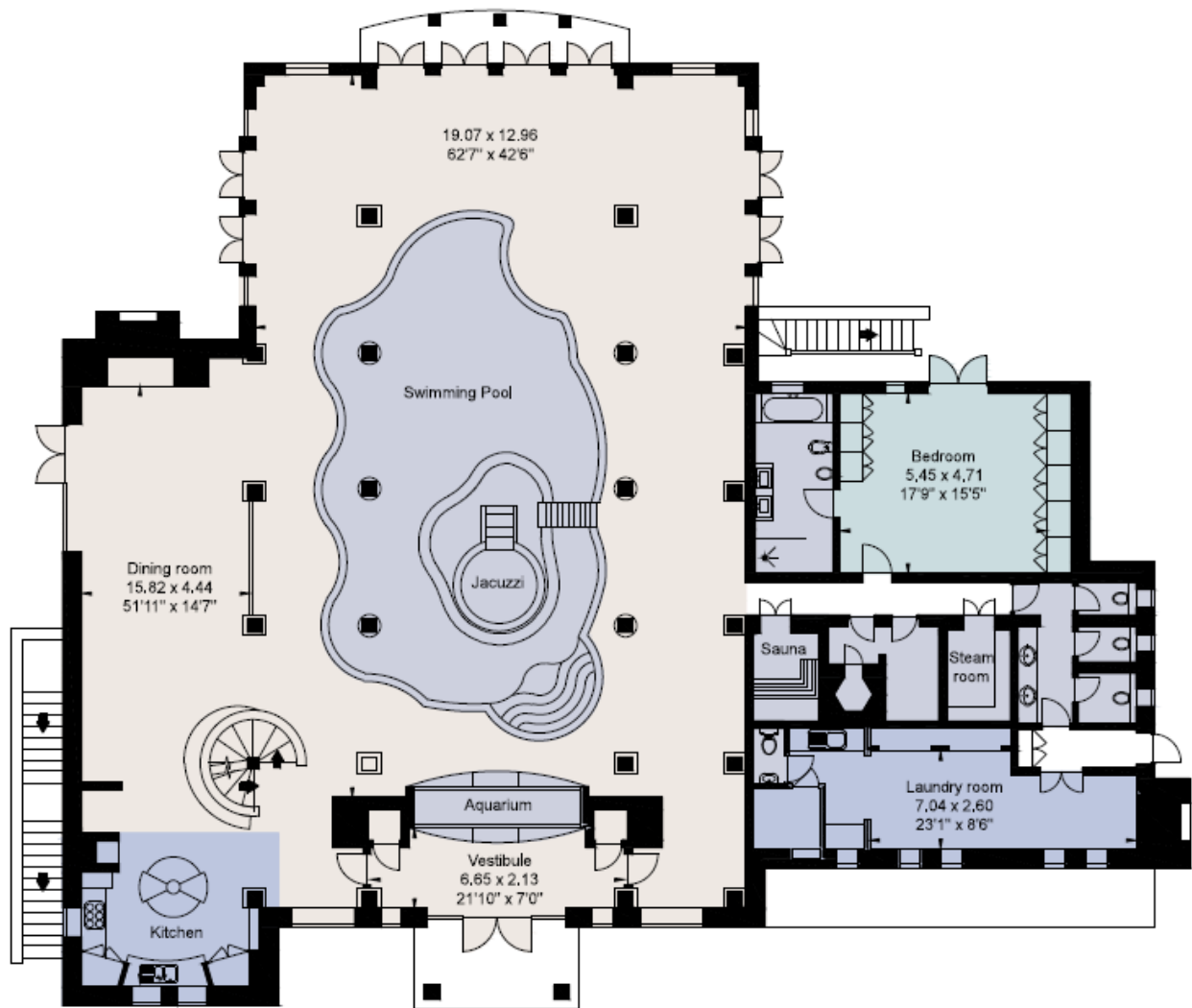
## LOWER GROUND FLOOR PLAN (main house)

---



## GROUND FLOOR PLAN (main house)

---

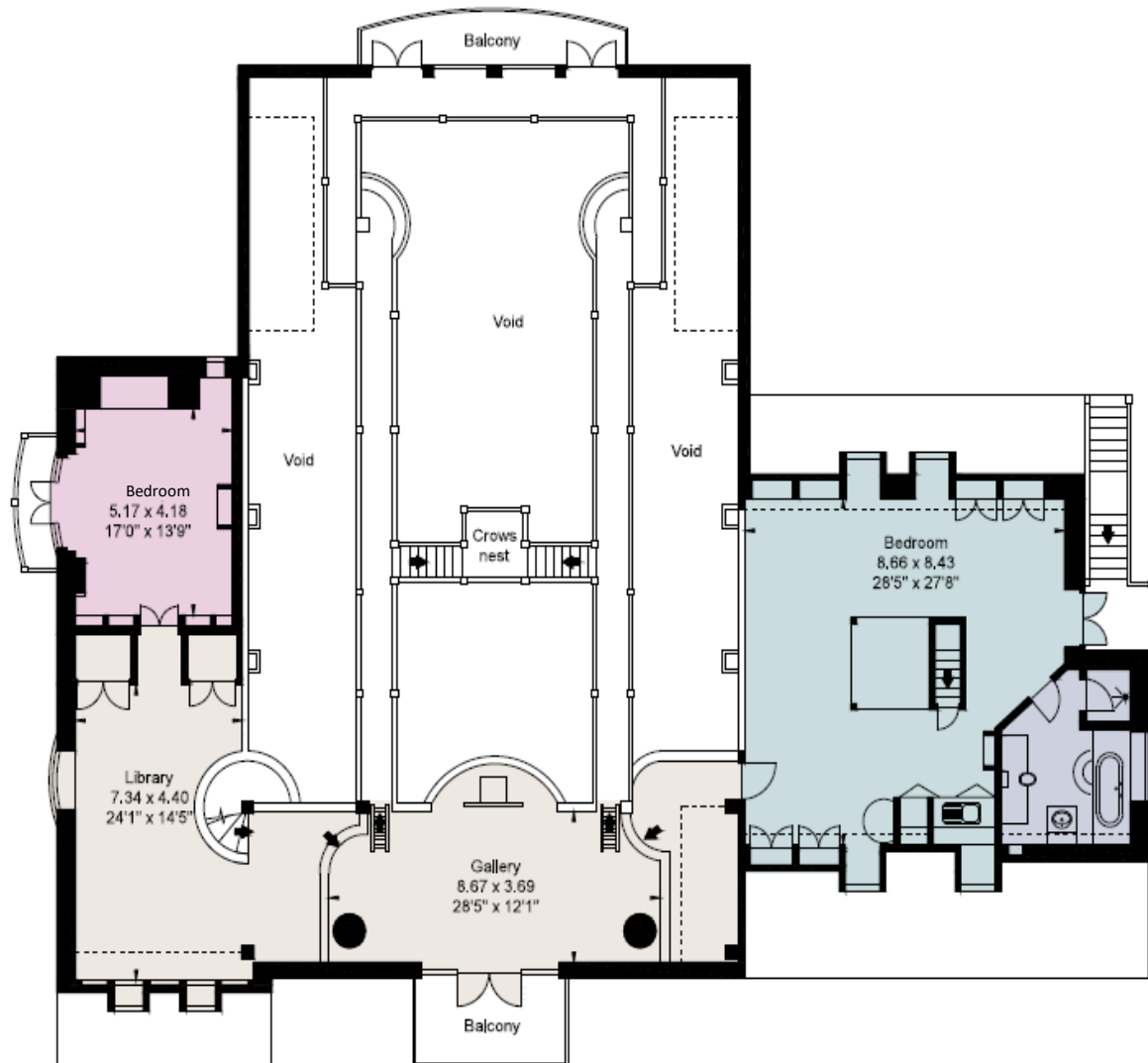


Note: there are three guest toilets on the ground floor.

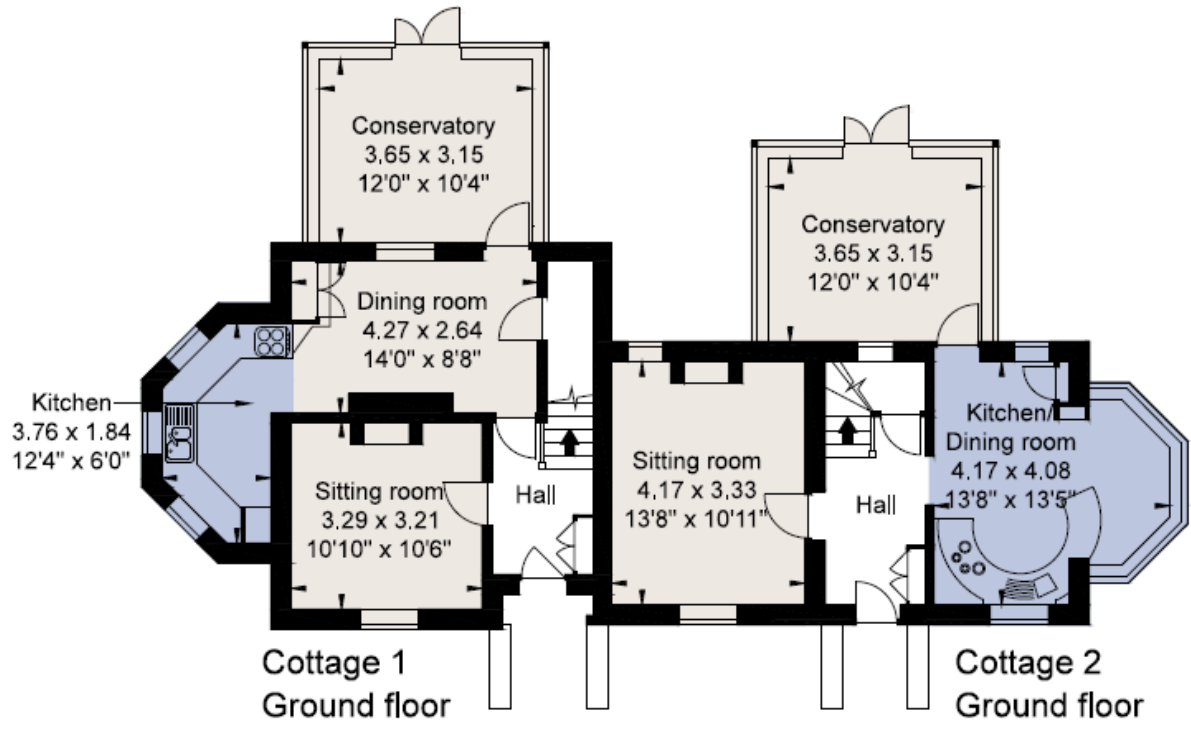


# FIRST FLOOR PLAN (main house)

---



GROUND FLOOR PLAN (thatched cottages)



FIRST FLOOR PLAN (thatched cottages)

