



LIST OF BEDROOMS & FLOOR PLANS AT KYLEVIEW MANOR

BEDROOMS – sleeps 18 in 8 bedrooms

● indicates a choice of bed configuration

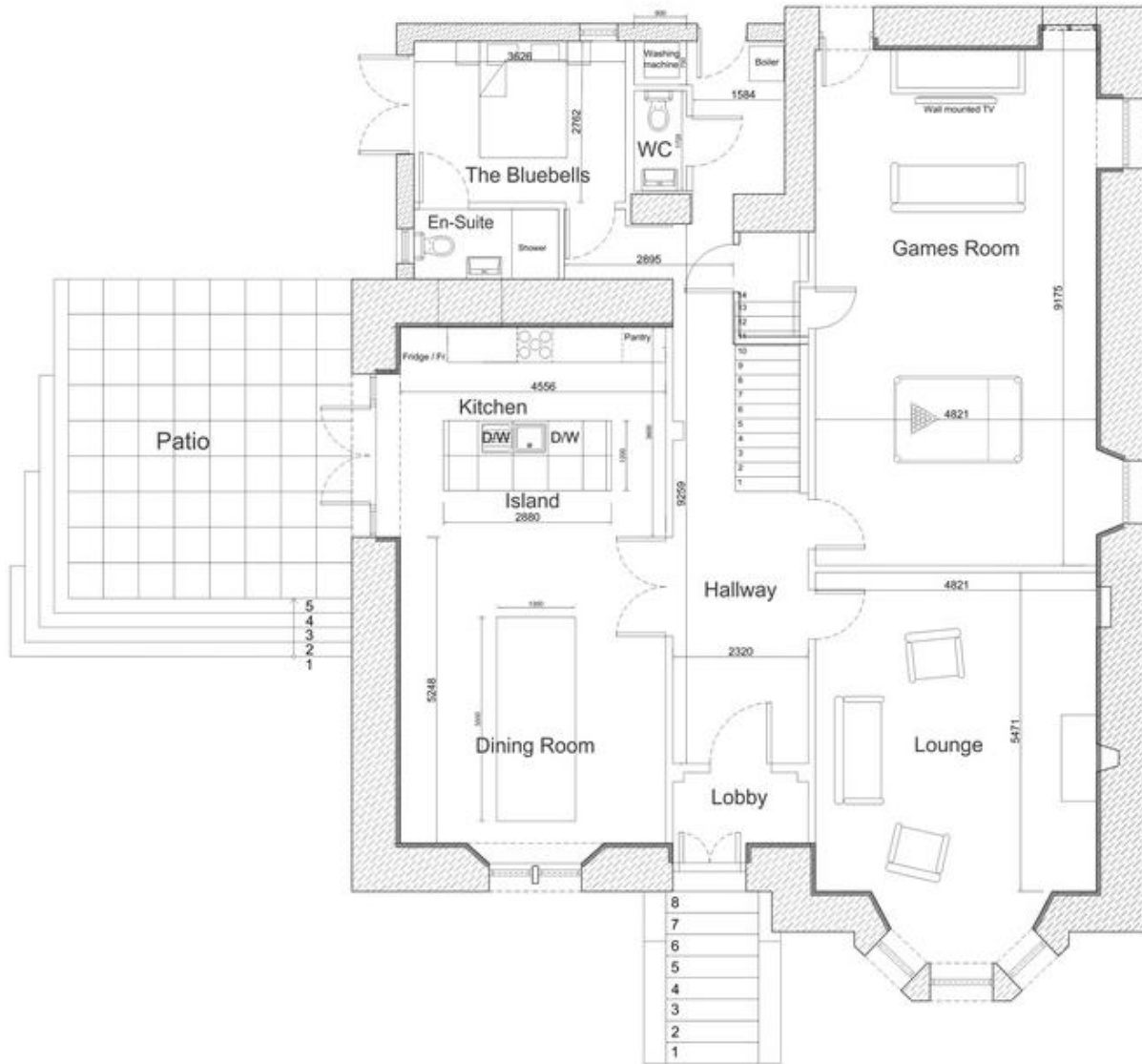
Bedroom	Beds	Sleeps	Features
The Bluebells (ground floor)	King size bed	2	Ground floor at rear. Ensuite with shower. French doors to garden.
Danny Wilson (first floor)	Two single beds (can be joined together to make a super king size bed*) ●	2	Side and northern Kyles views. Ensuite with shower.
The Proclaimers (first floor)	Super king size bed (can be divided into two single beds) ●	2	Side and northern Kyles views. Ensuite with shower.
Deacon Blue (first floor)	Super king size bed (can be divided into two single beds) ●	2	Front of the house with views of the Kyles of Bute. Ensuite with shower.
The Waterboys (first floor)	Super king size bed	2	Front of the house with views of the Kyles of Bute. Ensuite with shower.
Orange Juice (first floor)	King size bed	2	Side and southern views of the Kyles of Bute. Ensuite with shower.
Love & Money (second floor)	King size bed (can be divided into two single beds) ● plus two single beds	4	Rear view. Shared use of large family bathroom with bath and separate shower.
Aztec Camera (second floor)	Two single beds (can be joined together to make a super king size bed*) ●	2	Front facing view of the Kyles of Bute. Shared use of large family bathroom with bath and separate shower.
Total		18	

*Please note that while the two single beds can be joined together to make a super king double, the headboards are fixed and so will be off centre.

A 15% discount is available for groups of 12 and under. This excludes some peak dates such as summer and Christmas holidays. The two bedrooms on the second floor (Love and Money and Aztec Camera) will be closed off.



FLOOR PLANS – ground floor



FLOOR PLANS – second floor

