



## LIST OF ROOMS AT WYATT CASTLE, DORSET

Whether it's a family getaway, special celebration, or the perfect corporate retreat, Wyatt Castle offers exclusive stay options to suit every need. The panoramic sea views, secluded grounds and tranquil setting ensure you and your guests total serenity.

Here's a list of all the main rooms in the castle:

### LIVING & ENTERTAINMENT SPACES

**Swimming Pool/Orangery:** with large French windows that lead out onto the terrace, this room's stunning sea views give it a wonderful continental feel. From September to June, the castle's swimming pool is in place for you to relax and enjoy.

During July & August it's transformed into a beautiful orangery for all to enjoy. Dining for up to 100 guests can take place here for summer weddings and events.

**Study:** the study's cosy feel makes it a great room to escape to for a bit of relaxation. Retreat for some time in front of the large television or play a game or two on the Nintendo Wii.

**Library:** the library's large French windows and stunning sea views give this graceful round room a luxurious feel. Ideal for relaxation or to host a drinks reception with a pianist playing the baby grand piano.

**Drawing Room:** blending elegance and natural beauty, the drawing room has large bay windows, which offer fantastic sea views from the plush and expertly finished lounge. The large and comfy sofas are the perfect place to enjoy your guests' company or for watching the large TV with Bluetooth Bose sound bar.

**Conservatory:** the conservatory offers intimate dining for up to eight people and a plush living space. Ideal for enjoying the morning sun over breakfast, the large double doors open out onto the terrace and give extensive views of the gardens and sea. For those not wishing to use the dining table, this can be transformed into a table tennis for your stay.

**Dining Room and Bar:** located inside the dining room, the bar offers plenty of fridge space along with a glass washer and ice machine for you to use during your stay. The bar can be fully stocked for your arrival if you wish to pre-order from the castle estate's cellar.

For weddings and events, the fully licenced bar can be open until 11pm either serving drinks you supply or operating a cash bar.

### KITCHEN & DINING SPACES

**Kitchen and Utility Room:** fully equipped with a six-hob range cooker and array of equipment, the castle's modern kitchen offers a beautiful space for you to cook up delicious meals for your stay. On arrival, the kitchen will be set up with a small amount of tea, coffee, sugar, milk and Nespresso coffee pods to get you started. With a large island that can seat up to eight people, this social space can be enjoyed at all times of day, with a portable mini Bluetooth Bose speaker to add to the atmosphere.



## BEDROOMS – sleeps 20 in 9 bedrooms

- indicates a choice of bed configuration

Bedroom	Beds	Sleeps	Features
Bedroom 1 - Orpheus (First Floor) Master Bedroom	Emperor king-size bed	2	En suite with shower. Freestanding handmade bath placed inside the room itself. Stunning sea views.
Bedroom 2 - Raffles (First Floor)	Four poster super king-size bed	2	En suite marble with shower. Views overlooking the main entrance and upper gardens.
Bedroom 3 - Half Moon (First Floor)	King-size bed	2	En suite with shower. Views over the upper gardens and helipad.
Bedroom 4 - Cape Schanck (First Floor)	Super king-size bed	2	En suite freestanding bath and separate shower. Double aspect windows with lovely views of the sea and garden.
Bedroom 5 - Lamaros (First Floor)	King-size bed	2	En suite with shower. Views over the upper garden and helipad.
Bedroom 6 - Royal (First Floor)	King-size bed	2	En suite with shower. Beautiful views over the Italian garden and out to sea.
Bedroom 7 - Botanical (First Floor) Family Room	King-size bed plus additional super-king, can be made into four single beds •	4	En suite with shower. Ideal family room, sleeping up to four people. A very light and spacious room with views over the Italian garden and courtyard.
Bedroom 8 - Print Hall (Mezzanine Floor)	Super king bed, can be made into two large twin beds •	2	En suite with bath.
Bedroom 9 - Margaret River (Mezzanine Floor)	Two plus-size twin beds	2	En suite with shower.
<b>Total</b>		<b>20</b>	

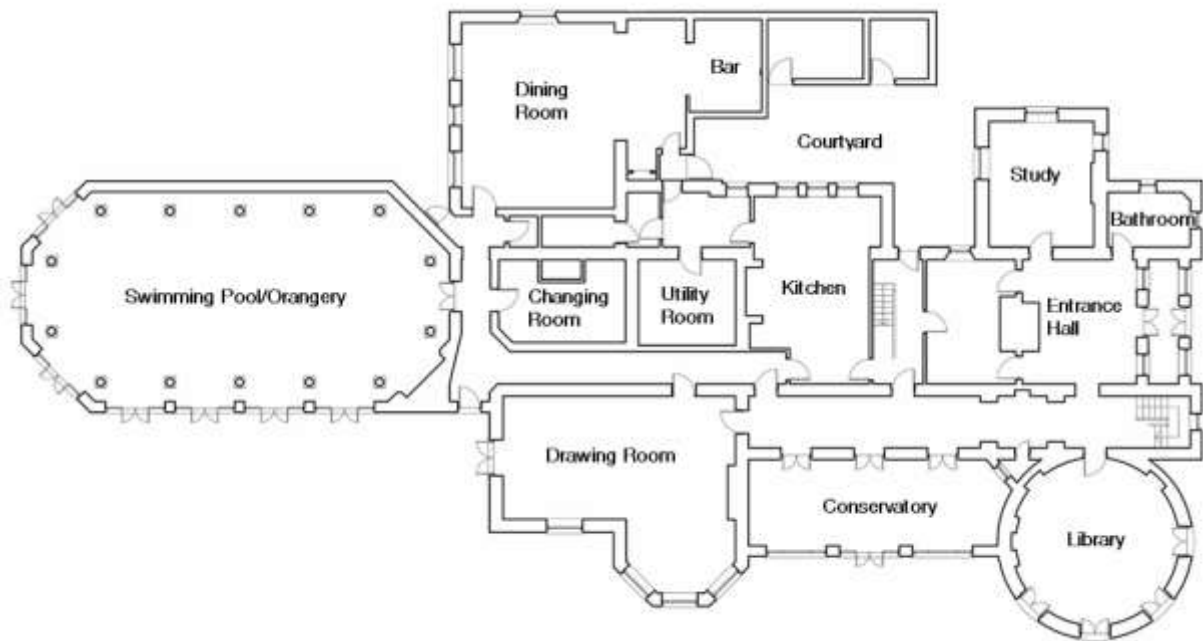
### Overall capacity:

- If each guest wants a private bedroom, the total capacity is 9.
- If each guest would like their own bed, the total capacity is 14.



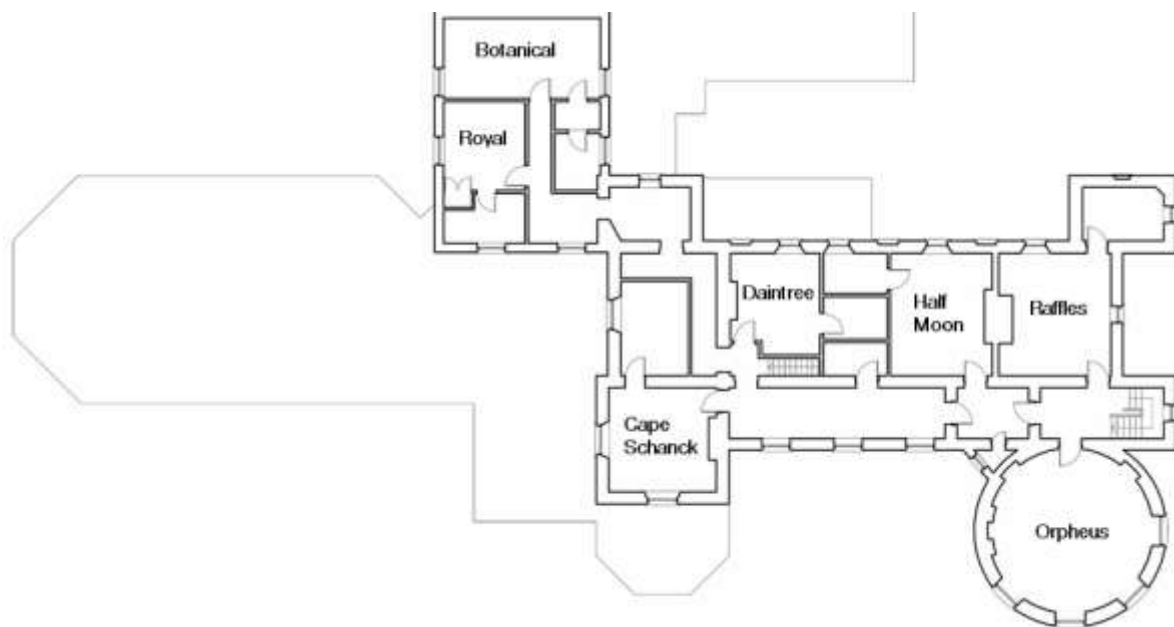
## FLOOR PLAN – GROUND FLOOR

---



## FLOOR PLAN – FIRST FLOOR

---



## FLOOR PLAN – MEZZANINE FLOOR

---

