



LIST OF BEDROOMS & FLOOR PLANS AT CARRON CASTLE

BEDROOMS – sleeps 30* (+ 6 children) in 17* bedrooms

*Please note the Tower Room is only available for stays from 20th June 2024.

● indicates a choice of bed configuration

Bedroom	Beds	Sleeps	Features
Birch Room 7m x 6m (first floor)	Super king size bed	2	Suite. North west aspect. Views over Tay Firth and woodland. En-suite with bath and shower over.
Birch Room Single 4m x 3.5m (first floor)	Single bed	1	Separate single room, part of the Birch Room Suite. Views over Tay Firth and woodland. Shared en-suite with Birch Room.
Beech Room 7m x 6m (first floor)	Super king size bed	2	Suite. West aspect. Views over Tay Firth, farmland and gardens. En-suite with bath and shower over.
Beech Room Single 3.5m x 5m (first floor)	Single bed	1	Separate single room, part of the Beech Room Suite. Views over Tay Firth and gardens. Shared en-suite with Beech Room.
Willow Room 7m x 5m (first floor)	Super king size bed	2	Northerly aspect. Views over Tay Firth, woodland and gardens. Private bathroom with bath and shower.
Oak Room 7m x 5m (first floor)	Super king size bed	2	South facing. Views over gardens. Adjoining door to Nursery Room. Shared bathroom with Sycamore Room with bath and shower over.
Nursery Room 8m x 5m (first floor)	Two bunk beds (4 beds), each with a roll out divan bed	6**	South facing. **Playroom with bunks and beds suitable for children only. Access to shower room across the hallway.
Sycamore Room 4m x 4m (first floor)	Queen size bed	2	South facing. Views over gardens and woodland. Shared bathroom with Oak Room with bath and shower over.
Maple Room (first floor)	King size bed	2	Northerly aspect. Views over Tay Firth, woodland and gardens. En-suite with free-standing bath and separate shower.



Bedroom	Beds	Sleeps	Features
Cedar Room (first floor)	King size bed	2	Northerly aspect. Views over Tay Firth, woodland and gardens. Bathroom on mezzanine level across the corridor with bath (not shown on floor plan).
Hazel Room (first floor)	Twin beds (can be joined to make a double bed) ●	2	Northerly aspect. Views over Tay Firth. Private bathroom with bath and shower over.
Chestnut Room 5m x 5m (second floor)	Super king size bed	2	North and east facing. Views over Tay Firth, woodland and gardens. En-suite with bath.
Cherry Room 6m x 5.5m (second floor)	Twin beds (can be joined to make a super king size bed) ●	2	Northly aspect. Views over Tay Firth and woodland. Private bathroom across the hallway with shower.
Rowan Room 5m x 5m (second floor)	King size bed	2	Northly aspect. Views over Tay Firth. Private bathroom with bath and shower.
Pine Room 4.5m x 4m (second floor)	King size bed	2	South facing. Views over gardens and tennis court. Shower room opposite. Shared toilet with Tower or Hawthorn Room.
Hawthorn Room 5.5m x 5.5m (second floor)	Super king size bed	2	South facing. Views over gardens and tennis court. Private shower room next door with walk-in shower.
*Tower Room (second floor)	King size bed	2	South and east facing. Views over gardens. Private bathroom with bath and shower.
Total		30 (+6*)	

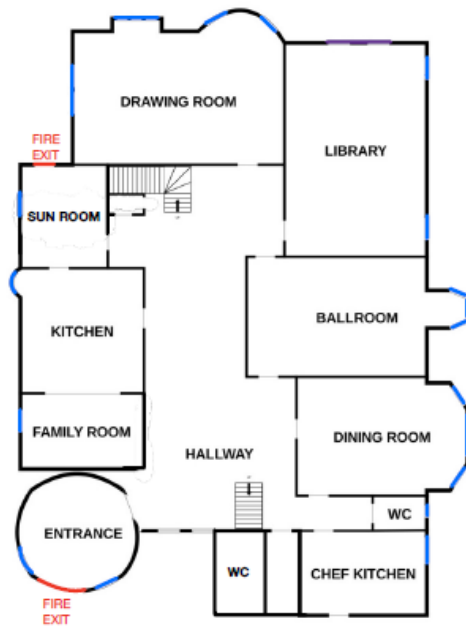
Additional rooms are available for staff if required, please ask for details.



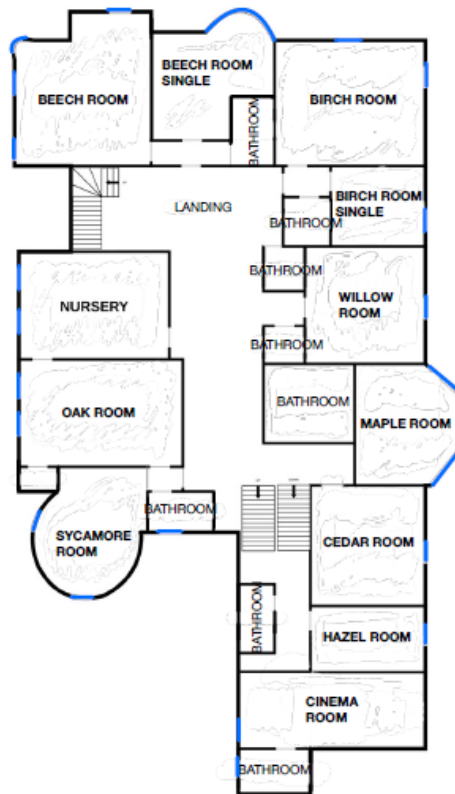
FLOOR PLANS



GROUND FLOOR



1ST FLOOR



2ND FLOOR

