



ROOMS & FLOORPLANS AT TEIGN RIVER HOUSE

[Teign River House](#) is nestled amongst the breath-taking woodlands of the Upper Teign Valley. Situated in the rolling Devon hills in a secluded and peaceful location, this property certainly takes some beating.

The house sleeps between 14-16 guests in 7 bedrooms. Below you'll find a list of the bedrooms available, along with a set of floor plans.

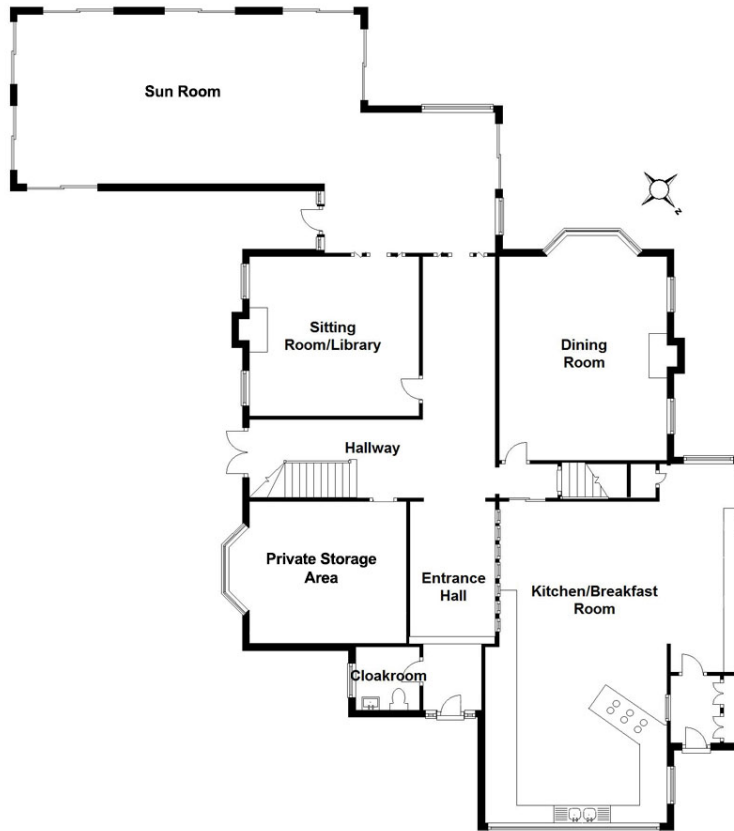
BEDROOMS – sleeps 14-16 in 7 bedrooms

● indicates a choice of bed configuration

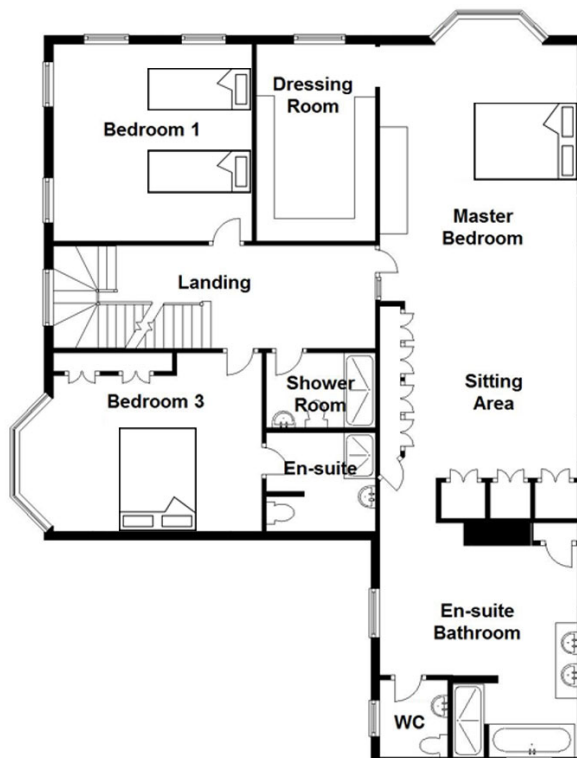
Bedroom	Beds	Sleeps	Features
Bedroom 1 First Floor	2 x single beds	2	
Master Bedroom First Floor	Super king size bed plus optional extra guest bed	2(+1)	Extremely spacious room with large walk-in dressing room, seating area and ensuite bathroom with bath, walk-in shower and twin sinks.
Bedroom 3 First Floor	King size bed	2	Ensuite bathroom with walk-in shower, sink and toilet.
Bedroom 4 Second Floor	2 x single beds	2	
Bedroom 5 Second Floor	King size bed plus sofa bed	2(+1)	Spacious room with small balcony overlooking the gardens.
Bedroom 6 Second Floor	King size bed	2	
The Annexe	King size bed can be divided into 2 single beds plus optional extra guest bed ●	2(+1)	Separate from the main house situated just across the courtyard above the utility area. Lovely views over the gardens, ensuite with walk-in shower, basin and toilet.
Total	7	16	



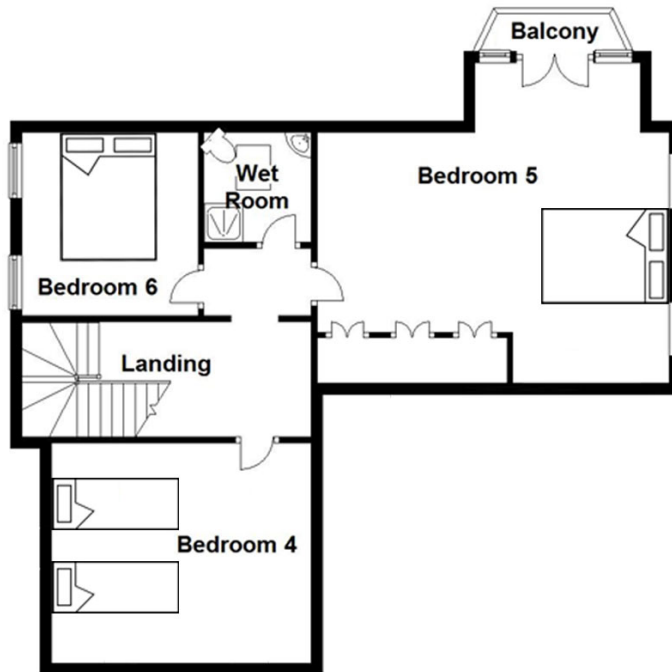
FLOOR PLAN (Ground Floor)



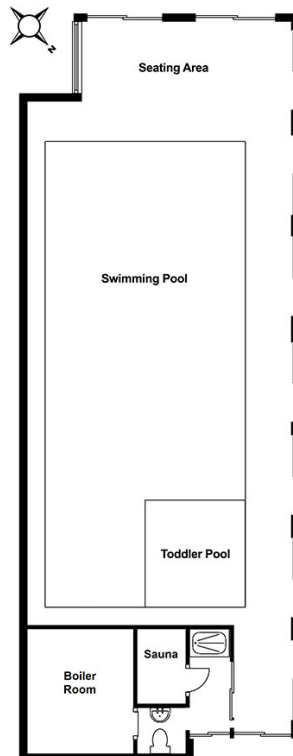
FLOOR PLAN (First Floor)



FLOOR PLAN (Second Floor)



FLOOR PLAN (Pool House)



FLOOR PLAN (Treehouse)

